



# REPLACEMENT PART GUIDE

## 6068HI550 PowerTech PVS 6.8L Gen Set OEM Engine (FT4)



### SECONDARY FUEL FILTER

[RE570134](#) (35E6) (35E7) (35E8) (35E9) (35EC) (35LD) (35LE) (35LF)  
[DZ115392](#) (35E6) (35E7) (35E8) (35E9) (35EC) (35LD) (35LE) (35LF)

500 Hours of Operation or Every 12 Months.



### PRIMARY FUEL FILTER

[DZ128543](#) (35E6) (35E7) (35E8) (35E9) (35EC) (35LD) (35LE) (35LF)

500 Hours of Operation or Every 12 Months.

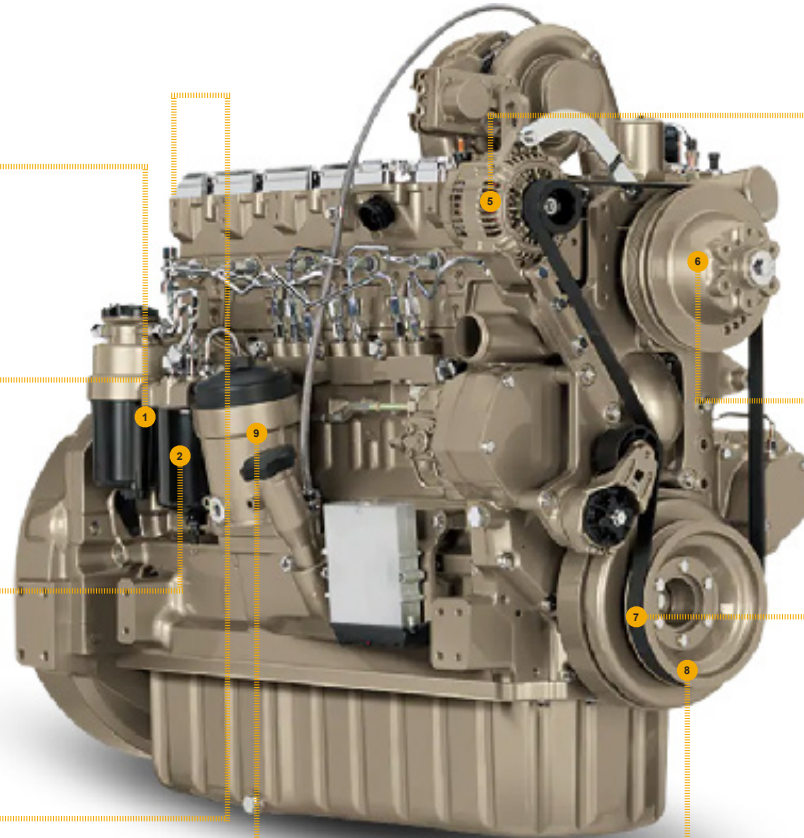


### OIL FILTER

[RE539279](#) (5970) (5975)  
 500 Hours of Operation or Every 12 Months.

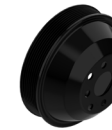
### STARTER

[RE564633](#) (24 V, 4 KW) (3090)  
[RE549229](#) (12 V) (30AT)  
[RE549230](#) (24 V) (30AU)  
[RE523502](#) (12 V) (3084)  
[DZ110083](#) (24 V, 4 KW) (3096)  
[RE523501](#) (12 V, 4.2 KW) (3073)  
[RE551644](#) (24 V, 7.8 KW) (30AY)  
[RE551637](#) (12 V) (30BX)  
[RE552251](#) (24 V, 3.5 KW) (30CA)



### ALTERNATOR

[RE537508](#) (12V, 120 A) (31AB)  
[RE558675](#) (24V, 60 A) (31AC)  
[RE558676](#) (24V, 100 A) (31AD)  
[DZ123153](#) (12V, 90 A) (31AE)  
[RE555751](#) (12V, 90 A) (31AF)  
[RE558678](#) (24V, 150 A) (31AG)  
[RE550906](#) (12V, 240 A) (31AH)



### FAN PULLEY

[R128660](#) (OD = 168mm) (8667)  
[R128662](#) (OD = 203 mm) (8668)  
[R113480](#) (OD = 173 mm) (8699)  
[R522890](#) (OD = 230 mm) (8673)



### FAN BELT

[DZ118786](#) (LGTH = 1715 mm) (2492) (24LN)  
[DZ118651](#) (LGTH = 1970 mm) (24JQ)  
[DZ118652](#) (LGTH = 2005 mm) (24JR)  
[DZ121131](#) (LGTH = 1990 mm) (24JS)  
[DZ118653](#) (LGTH = 2025 mm) (24JT)  
[DZ118559](#) (LGTH = 1700 mm) (24JV)  
[DZ121128](#) (LGTH = 1725 mm) (24JW)  
[DZ118561](#) (LGTH = 1750 mm) (24JX)  
[DZ118560](#) (LGTH = 1720 mm) (24JY) (24LN)  
[DZ121133](#) (LGTH = 1765 mm) (24LP)  
[DZ118886](#) (LGTH = 2065 mm) (24LU)



### CRANKSHAFT PULLEY & DAMPER

[RE541578](#) (OD=170 mm) (1343)  
[RE57604](#) (OD=271 mm) (6895) (6816) (6811)  
[RE508578](#) (OD=264 mm) (1320)  
[RE505939](#) (OD= 255 mm) (1321)  
[RE505941](#) (OD=188 mm) (1322)  
[R545125](#) (OD= 193 mm) (1334 )  
[DZ119883](#) (OD = 350 mm) (6813)



### CRANKCASE VENT SYSTEM

[RE553703](#) (29AE)  
[RE553703](#) (29CC)

1500 Hours of Operation.



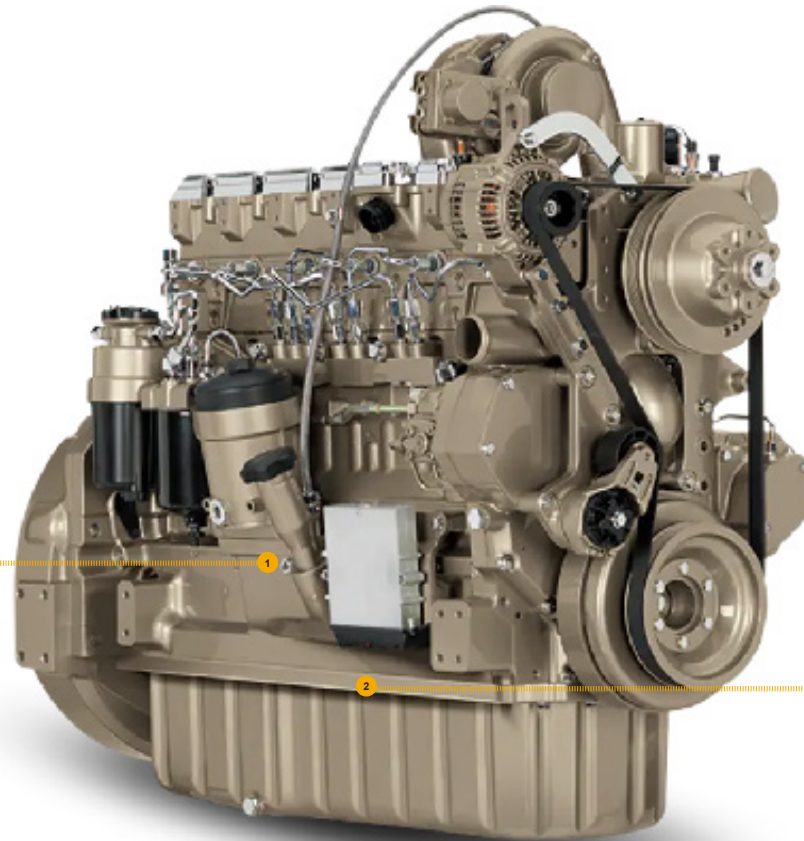
**JOHN DEERE**  
 Genuine Parts and Service

CLICK PART NUMBER TO BUY

\*See operator's manual for additional details.

# REPLACEMENT PART GUIDE

## 6068HI550 PowerTech PVS 6.8L Gen Set OEM Engine (FT4)



### DOSING UNIT PUMP FILTER



[DZ114640](#) (3315) (3316) (3317) (3318) (3327) (3328) (3335) (3336) (3349) (3350) (3351) (3352) (3353) (3354) (3369)

4500 hrs of operation or every 36 months.

### SHORT BLOCK ASSEMBLY



[DZ109872](#)

### DIESEL EXHAUST FLUID INLINE FILTER



[DZ124402](#) (3349) (3350) (3351) (3352) (3353) (3354) (3369)

8000 hrs of operation or every 36 months.

### DIESEL EXHAUST FLUID TANK HEADER SUCTION SCREEN



[DZ111004](#) (3419) (3420) (3421) (3422) (3423) (3424) (3425) (3426) (3427) (3428) (3429) (3430) (3431) (3432) (3433) (3434) (3435) (3436) (3437) (3498) (3499)

[DZ114695](#) (3429) (3430) (3431) (3432) (3433) (3434) (3435) (3436) (3437) (3498) (3499)

[DZ111166](#) (974G USE WITH [DZ113373](#)) (974J USE WITH [DZ113377](#)) (974C)

[DZ110562](#) (974G USE WITH [DZ113378](#)) (974J USE WITH [DZ110563](#))

1500 Hours Of Operation Or Every 36 Mmonths.

### COMPLETE BLOCK ASSEMBLY



[DZ123557](#) (USE WITH OPTION CODES 3638 AND 4643)

[DZ123560](#) (USE WITH OPTION CODES 3639 AND 4609)

\*Includes cylinder head with vales and rocker arm assembly, Balancer shafts, Includes oil pump assembly, complete gasket kit with front and rear seals.

### DIESEL EXHAUST FLUID TANK INLET SCREEN



[DZ114695](#) (3429) (3430) (3431) (3432) (3433) (3434) (3435) (3436) (3447) (3448) (3449) (3450) (3451) (3452) (3453) (3454) (974C) (974G) (974J) (974L)

As Required.



**JOHN DEERE**

Genuine Parts and Service

\*THIS PART IS NOT AVAILABLE IN ALL COUNTRIES - COMPLETE BLOCK ASSEMBLY

CLICK PART NUMBER TO BUY

\*See operator's manual for additional details.

# REPLACEMENT PART GUIDE

## 6068HI550 PowerTech PVS 6.8L Gen Set OEM Engine (FT4)

### STARTER

[SE502631](#) (REMAN FOR [RE523501](#))  
(12V ,4.2 KW) (3073)

[SE502632](#) (REMAN FOR [RE523502](#))  
(12V ,4 KW) (3084)

[SE502558](#) (REMAN FOR [RE549229](#)) (12V)  
(30AT)

[SE502823](#) (REMAN FOR [RE549230](#))  
(24V) (30AU)

[SE502736](#) (REMAN FOR [RE551644](#))  
(24V ,7.8 KW) (30AY)

[SE502733](#) (REMAN FOR [RE564633](#)) 24V  
(3090)



### WATER PUMP

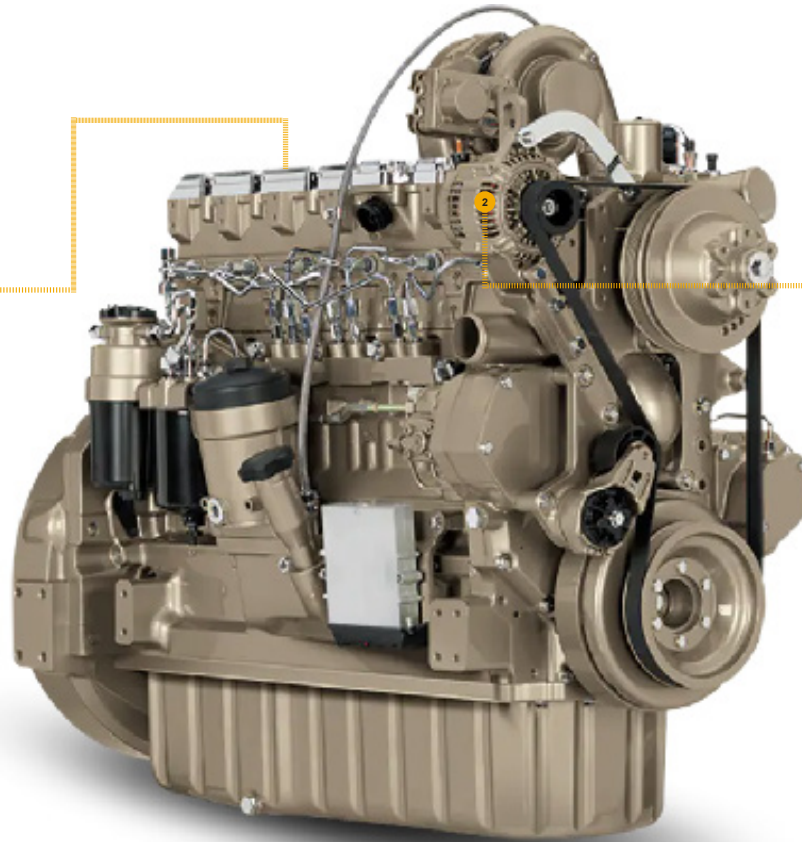
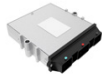
[SE502636](#) (REMAN FOR [RE539091](#)) (2050)



### CONTROLLER

[RM100100](#) REMAN FOR RE548097 (84KG)

[RM100131](#) REMAN FOR RE551059 (84KE)  
(84KJ)



### ALTERNATOR

[SE502560](#) (REMAN FOR [DZ123153](#) OR  
[RE537507](#))(12 V, 90 A) (31AE)

[SE502561](#) (REMAN FOR [RE537508](#))  
(12V, 120A) (31AB)

[RM100162](#) (REMAN FOR [RE550906](#))  
(12V, 240A) (31AH)

[SE502680](#) (REMAN FOR [RE555751](#))  
(12V, 200A) (31AF)

[SE502563](#) (REMAN FOR [RE558676](#))  
(24V, 100A) (31AD)



**JOHN DEERE**  
Genuine Parts and Service

CLICK PART NUMBER TO BUY

\*See operator's manual for additional details.