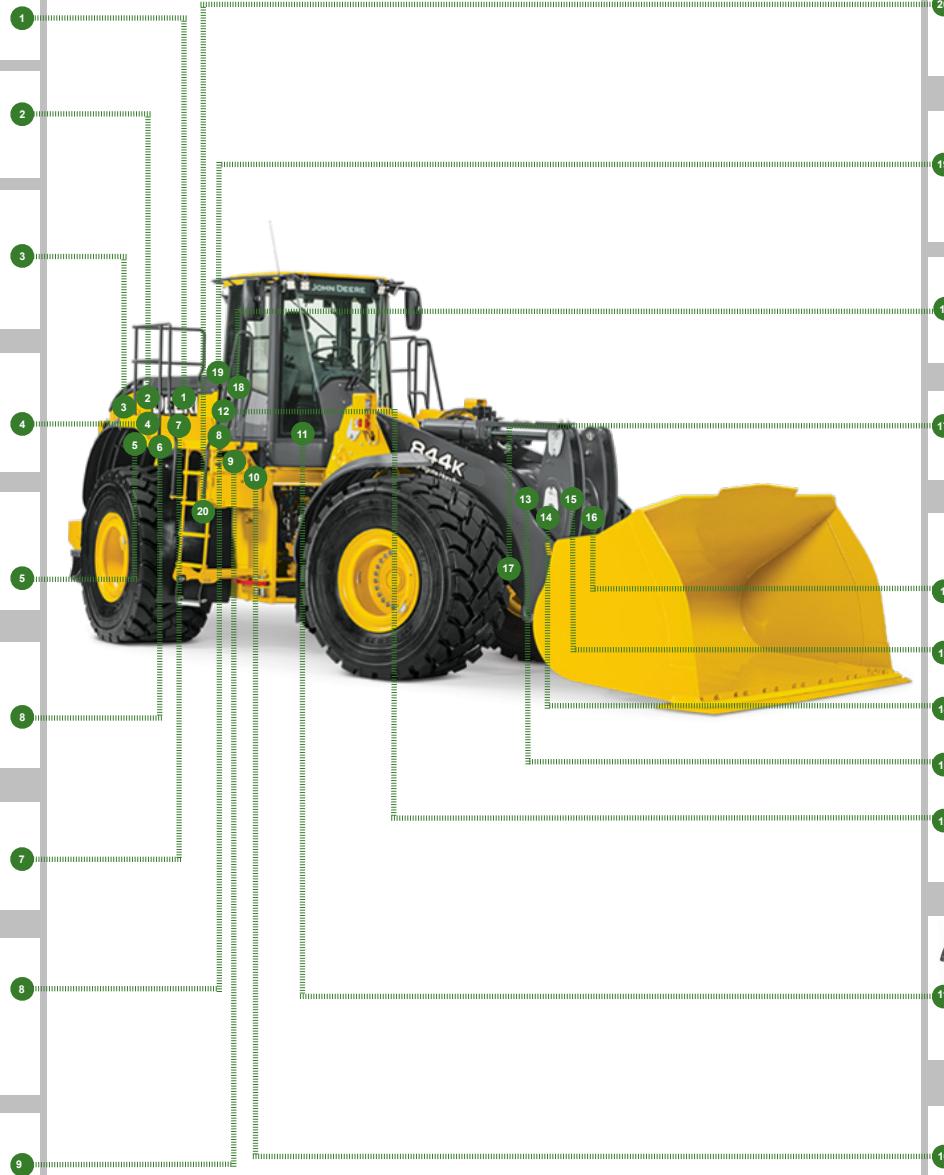


REPLACEMENT PARTS GUIDE

844K 4WD Loader (PIN: 1DW844K__E645193—)



FINAL FUEL FILTER

[RE533910](#)

Interval (hrs) - 500.



HYDRAULIC RESERVOIR BREATHER FILTER [AM39653](#)

Interval (hrs) - 500.



ENGINE ROCKER ARM COVER GASKET

FRONT- [R531581](#)

REAR - [R531582](#)

Interval (hrs) - 2000.



AIR FILTER ELEMENT PRIMARY [AT311066](#)

Interval (hrs) - 1000.



AIR FILTER ELEMENT SECONDARY [AT311067](#)

Interval (hrs) - 1000.



IN-LINE FUEL STRAINER

[AT223493](#)

Interval (hrs) - 500.



FUEL TANK BREATHER FILTER

[H216169](#)

Interval (hrs) - 1000.



PRIMARY FUEL FILTER [RE539465](#)

Interval (hrs) - 500.



ENGINE OIL FILTER [RE530107](#)

Interval (hrs) - 500.



TRANSMISSION OIL FILTERS

[AT336140](#)

Interval (hrs) - 2000.



FAST FILL FUEL BREATHER (IF EQUIPPED) - [T225008](#)

Interval (hrs) - 500.



DIESEL PARTICULATE FILTER (COMPONENT OF EXHAUST FILTER)

[RE541836](#)

Interval (hrs) - As Required.



AXLE OIL FILTER

[AT333901](#)

Interval (hrs) - 500.



OUTER PIN SEALS NEVERGREASE™ LINKAGE BOOM TO ATTACHMENT JOINT

[AT341093](#)



ATTACHMENT TO BUCKET LINK JOINT, BUCKET LINK TO BELLCRANK JOINT

[AT410593](#) ,



BELLCRANK TO BOOM JOINT - [AT341092](#)

ATTACHMENT TO BUCKET LINK JOINT, BUCKET LINK TO BELLCRANK JOINT

[AT330664](#)



STEERING CYLINDER JOINT- [T277557](#)

Interval (hrs) - As Required.



FRESH AIR FILTER ELEMENT

[AT191102](#)



RECIRCULATION AIR FILTER ELEMENT [AT307501](#)

Interval (hrs) - As Required.



HYDRAULIC SYSTEM RETURN FILTERS

[AT335977](#)

Interval (hrs) - 4000.



JOHN DEERE

Genuine Parts and Service








CLICK PART NUMBER TO BUY

*See operator's manual for additional details.

Jan.2022. Release Date.

REPLACEMENT PARTS GUIDE

844K 4WD Loader (PIN: 1DW844K__ _E645193—)

Part Description	Part Number	Qty or capacity	Change Interval In Hours
John Deere Plus-50™ II Hydraulic Oil ² 	TY27367	242.0 L(63.9 gal)	4000
John Deere Hy-Gard™ Oil			
Transmission ⁵ 	TY6354	28.0 L(7.4 gal)	2000
Park Brake ⁵ 	TY6354	0.71 L(24.0 oz)	1000
Front Axle ⁵ 	TY6354	68.0 L(18.0 gal)	2000
Rear Axle ⁵ 	TY6354	68.0 L(18.0 gal)	2000
Cool-Gard™ II Pre-Mix 	TY26575	74.9 L(19.8 gal)	6000
Coolant Extender 	TY26603	As Required	As Required
Fluid Analysis Kits⁶			
Engine Oil	AT346594	1	250
Transmission Oil	AT346594	1	500
Axle Oil	AT346594	2	500
Hydraulic Oil	AT346594	1	500
Diesel Fuel	TY27329	1	500
Engine Coolant	TY26873	1	500
COOL-GARD™ II Test Strips	TY26605	1	As Required
<p>²During normal operating conditions, the fast fill fuel breather filter should be changed every 500 hours. If operating in dusty conditions, check filter more often and replace as required.</p> <p>⁵See operator's manual for recommended oil type and oil viscosities based on operating temperatures.</p> <p>⁶Based on fluid analysis results, intervals may need to be adjusted for operating conditions. Consult an authorized John Deere dealer.</p>			

Plus-50 is a trademark of Deere & Company.

Hydrau is a trademark of Deere & Company

Hy-Gard is a trademark of Deere & Company.

COOL-GARD is a trademark of Deere & Company.



Service Intervals

844K 4WD Loader (PIN: 1DW844K_ _E645193—)

As Required	
<input type="checkbox"/> Service exhaust filter	<input type="checkbox"/> Check rear camera and radar object detection (ROD) system—if equipped
<input type="checkbox"/> Inspect tires and check pressure	<input type="checkbox"/> Replace fast fill fuel breather filter—if equipped ¹
<input type="checkbox"/> Check wheel bolt/nut torque	<input type="checkbox"/> Check windshield washer fluid level
<input type="checkbox"/> Inspect engine air cleaner elements	<input type="checkbox"/> Drain water from primary fuel filter with water separator
<input type="checkbox"/> Inspect air conditioner compressor and alternator belt	<input type="checkbox"/> Check and clean or replace cab fresh air filter
<input type="checkbox"/> Clean cooler cores	<input type="checkbox"/> Check and clean or replace cab recirculating air filter
<input type="checkbox"/> Add coolant extender as indicated by COOL-GARD™ II test strips	
¹ During normal operating conditions, the fast fill fuel breather filter should be changed every 500 hours. If operating in dusty conditions, check filter more often and replace as required.	
Every 10 Hours or Daily	
<input type="checkbox"/> Check coolant level at surge tank	<input type="checkbox"/> Check transmission oil level
<input type="checkbox"/> Check engine oil level	<input type="checkbox"/> Inspect outer pin seals
<input type="checkbox"/> Check hydraulic system oil level	
Every 100 Hours	
<input type="checkbox"/> Lubricate loader linkage and cylinder pivots—unless NeverGrease™ equipped	<input type="checkbox"/> Lubricate rear axle front oscillating pivot
Every 250 Hours	
<input type="checkbox"/> Take engine oil sample	
Initial Service—500 Hours ¹	
<input type="checkbox"/> Replace axle oil filters	<input type="checkbox"/> Drain and refill front and rear axle oil
² Perform initial service once after the first 500 hours of operation.	
Every 500 Hours	
<input type="checkbox"/> Check battery water level and tighten terminals	<input type="checkbox"/> Lubricate front and rear shaft seals on park brake
<input type="checkbox"/> Check front and rear axle oil level	<input type="checkbox"/> Check park brake oil level
<input type="checkbox"/> Check air intake hoses and charge air cooler tube couplings	<input type="checkbox"/> Check ride control accumulator
<input type="checkbox"/> Drain and refill engine oil and replace filter	<input type="checkbox"/> Take transmission oil sample
<input type="checkbox"/> Replace fast fill fuel breather filter—if equipped ²	<input type="checkbox"/> Take hydraulic oil sample
<input type="checkbox"/> Replace primary fuel filter with water separator	<input type="checkbox"/> Take axle oil sample
<input type="checkbox"/> Replace final fuel filter	<input type="checkbox"/> Take diesel fuel sample
<input type="checkbox"/> Replace in-line fuel strainer	<input type="checkbox"/> Take engine coolant sample
<input type="checkbox"/> Replace hydraulic reservoir breather filter	
² During normal operating conditions, the fast fill fuel breather filter should be changed every 500 hours. If operating in dusty conditions, check filter more often and replace as required.	
Every 1000 Hours	
<input type="checkbox"/> Replace engine air cleaner elements	<input type="checkbox"/> Lubricate frame hinge pivots
<input type="checkbox"/> Replace fuel tank breather filter	<input type="checkbox"/> Drain and refill park brake oil
<input type="checkbox"/> Replace axle oil filters	<input type="checkbox"/> Check coolant
<input type="checkbox"/> Clean hydraulic fan drive case drain in-line screens	
Every 2000 Hours	
<input type="checkbox"/> Drain and refill front and rear axle oil ³	<input type="checkbox"/> Rerun transmission clutch calibration
<input type="checkbox"/> Drain and refill transmission oil and replace filters ⁴	<input type="checkbox"/> Adjust engine valve lash (clearance)
<input type="checkbox"/> Check and adjust electronic injector preload	<input type="checkbox"/> Replace outer pin seals
³ The magnetic axle oil drain plug is serving its function when a ball of fine metal particles or machining chips are found on the magnet. If concerned with the amount of debris on the magnet of the drain plug, the magnet could be cleaned and checked again after running a short period of time with fresh oil.	

⁴Reduce service intervals to 1500 hours in severe applications, which run the torque converter at high loads for more than approximately 25% of the time. (Examples include basement digging, land clearing, etc.)

Every 4000 Hours

- | | |
|--|--|
| <input type="checkbox"/> Clean hydraulic pump case drain in-line screens | <input type="checkbox"/> Replace hydraulic system return filters |
| <input type="checkbox"/> Clean hydraulic system fill strainer | <input type="checkbox"/> Drain, flush, and refill hydraulic system oil |

Every 5000 Hours

- | |
|--|
| <input type="checkbox"/> Check driveline damper for cracks |
|--|

Every 6000 Hours

- | |
|--|
| <input type="checkbox"/> Drain and refill cooling system |
|--|