

# REPLACEMENT PART GUIDE

## 6068HB551 PowerTech PVS 6.8L LBH OEM Engine (Stage V)



### OIL FILTER

[RE539279](#) (5970)

500 hrs of operation or every 12 months.



### FUEL FILTER

[DZ115391](#) (Primary Filter) (35LD)

[DZ115392](#) (Secondary Filter) (35LD)

500 hrs of operation or every 12 months.



### CRANKCASE VENT OCV FILTER

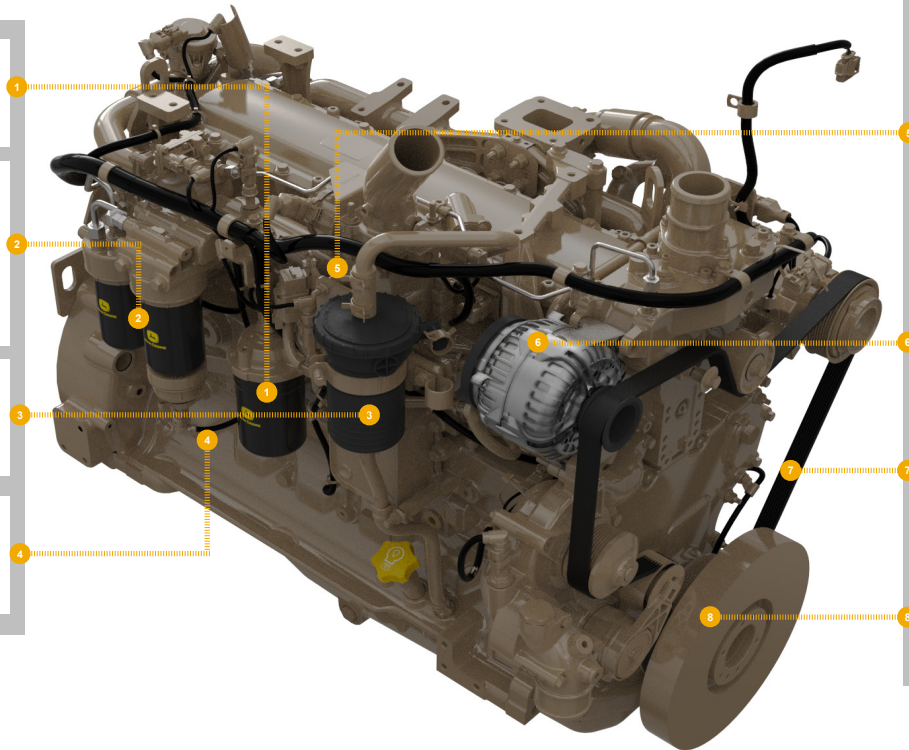
[DZ105100](#) (29BW)

1500 Hours of operation.



### STARTER

[RE549230](#) (24 V) (30AU, 30BN)



### SHORT BLOCK ASSEMBLY

[DZ109872](#) (MARKED R534123)

Also order crank damper, engine gasket kit, dipstick tube, oil pump, cylinder head bolt kit, crank wheel, (1) DZ109926 bushing, (1) DZ109927 valve, (1) DZ106855 spring, (1) DZ109925 fitting plug, (1) R121043 valve, (1) R111137 spring, and parts from the short block hardware kit as needed.



### ALTERNATOR

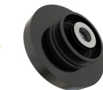
[RE558676](#) (BOSCH, 24 V, 100 A) (31AD)



### FAN BELT

[DZ118786](#) (LGTH = 1715 mm) (2492)

[DZ118886](#) (LGTH = 2065 mm) (24LU)



### CRANKSHAFT PULLEY AND DAMPER

[RE541578](#) (OD = 325 mm) (1343)



**JOHN DEERE**

Genuine Parts and Service



# REMAN PARTS GUIDE

## 6068HB551 PowerTech PVS 6.8L LBH OEM Engine (Stage V)



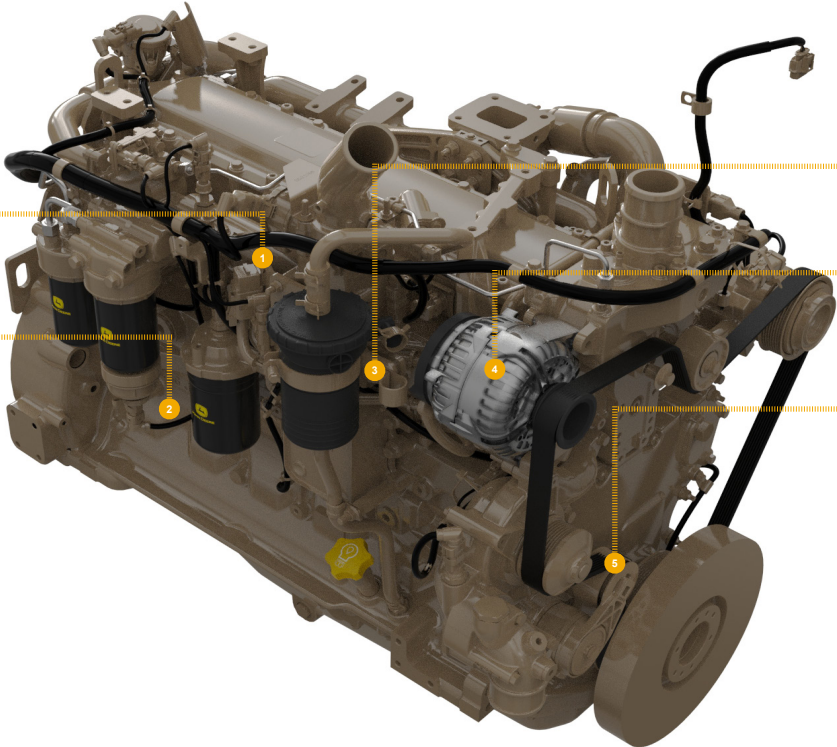
### CONNECTING ROD

[SE501094](#) (REMAN FOR [RE500608](#)) (4865)



### STARTER

[SE502823](#) (REMAN FOR [RE549230](#) OR [RE539695](#)) (24 V) (30AU, 9901)



### ENGINE CONTROLLER

[RM100131](#) (REMAN FOR [RE551059](#)) (84RG)



### ALTERNATOR

[SE502563](#) (REMAN FOR [RE558676](#)) (24 V) (31AD)



### WATER PUMP

[SE502636](#) (REMAN FOR [RE539091](#)) (2050)