

REPLACEMENT PARTS GUIDE

768L-II (PIN: 1DW768LB__C702907—)

768L-II (PIN: 1DW768LB__D702907—)



HYDRAULIC SYSTEM OIL FILTERELEMENT

[F061786](#)

Interval (hrs) - 4000.



ENGINE OIL FILTER

[DZ101884](#)

Interval (hrs) - 500.



PRIMARY AND FINAL FUEL FILTER KIT

[RE525523](#)

Interval (hrs) - 500.



FUEL TANK BREATHER

[H216169](#)

Interval (hrs) - 2000.



AUXILIARY FUEL FILTER ELEMENT

[AT365869](#)

Interval (hrs) - 500.



FRONT AXLE OIL FILTER

[AT367635](#)

Interval (hrs) - 1000.



ENGINE CRANKSHAFT DAMPER

[RE520465](#)

Interval (hrs) - 4000.



ENGINE CRANKSHAFT DAMPER

[RE57604](#)

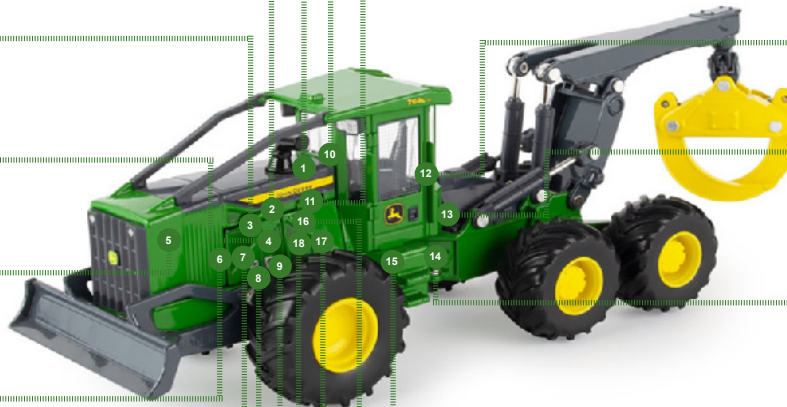
Interval (hrs) - 4000.



ENGINE DRIVE SHAFT

[AT440739](#)

Interval (hrs) - 10000.



HYDRAULIC RESERVOIR BREATHER FILTER

[AT421408](#)

Interval (hrs) - 4000.



DUST UNLOADER VALVE

[T311486](#)

Interval (hrs) - As Required.



CAB RECIRCULATING AIR FILTER ELEMENT

[AT307501](#)

Interval (hrs) - As Required.



CAB FRESH AIR FILTER ELEMENT

[AT191102](#)

Interval (hrs) - As Required.



PRIMARY TRANSMISSION OIL FILTER

[AT468647](#)

Interval (hrs) - 2000.



SECONDARY TRANSMISSION OIL FILTER

[T436566](#)

Interval (hrs) - 4000.



PRIMARY AIR CLEANER ELEMENT

[AT308575](#)

Interval (hrs) - As Required.



ENGINE ROCKER ARM COVER GASKET

[R527884](#)

Interval (hrs) - 2000.



SECONDARY AIR CLEANERELEMENT

[TT220747](#)

Interval (hrs) - As Required.



JOHN DEERE

Genuine Parts and Service

OILS AND CAPACITIES INFORMATION

768L-II (PIN: 1DW768LB__C702907—)

768L-II (PIN: 1DW768LB__D702907—)

Part Description	Qty or capacity	Change Interval In Hours
John Deere Plus-50™ II Engine Oil ⁴	28.5 L(7.5 gal)	500
John Deere Hy-Gard™ Front Axle Oil ⁴ —SWEDA™ (Super Wide Extreme Duty Axles)	31.4 L(8.3 gal)	2000
John Deere Hy-Gard™ Park Brake Oil ⁴	0.8 L(27.0 floz)	1000
John Deere Hy-Gard™ Transmission Oil ⁴	57.0 L(15.1gal)	2000
API GL-5 and MT-1 Rear Bogie Axle Housing and Differential Oil ⁴	15.6 L(4.1 gal)	1000
API GL-5 and MT-1 Rear Bogie Axle Bogie Housing Oil ⁴ (per side)	62.3 L(16.5gal)	2000
API GL-5 and MT-1 Rear Bogie Axle Final Drive Oil ⁴ (each)	11.2 L(3.0 gal)	2000
John Deere Hydrau™ Hydraulic System Oil ⁴	123.6L(32.7 gal)	4000
John Deere Hydrau™ Winch Oil ⁴ —4000 Series (if equipped)	35.2 L(9.3 gal)	4000
John Deere Cool-Gard™ II Premix	36.7 L(9.7 gal)	6000

OILS AND CAPACITIES INFORMATION

768L-II (PIN: 1DW768LB__C702907—)

768L-II (PIN: 1DW768LB__D702907—)

Fluid Analysis Kits ⁵			
Part Description	Part Number	Qty or Capacity	Change Interval In Hours
Diesel Engine Oil	AT346594	1	250
Transmission Oil	AT346594	1	500
Hydraulic Oil	AT346594	1	500
Front Axle Oil	AT346594	2	500
Rear Bogie Axle Oil	AT346594	1	500
Park Brake Oil	AT346594	2	500
Diesel Fuel	TY27329	1	500
Winch Gear Case Oil (if equipped)	AR69444	1	500
Engine Coolant	TY27787	1	500

⁴See operator's manual for recommended oil type and oil viscosities based on operating temperatures.

⁵Based on fluid analysis results, intervals may need to be adjusted for operating conditions. Consult an authorized John Deere dealer.

Plus-50 is a trademark of Deere & Company

Hy-Gard is a trademark of Deere & Company

SWEDA is a trademark of Deere & Company

Hydrau is a trademark of Deere & Company

Cool-Gard is a trademark of Deere & Company

Service Intervals

As Required	
<input type="checkbox"/> Clean cooler cores	<input type="checkbox"/> Fill and charge pressurized water system (if equipped)
<input type="checkbox"/> Inspect accessory drive belt	<input type="checkbox"/> Check fire extinguisher charge
<input type="checkbox"/> Replace engine air cleaner elements	<input type="checkbox"/> Lubricate cab door hinges
<input type="checkbox"/> Inspect tires and check pressure	<input type="checkbox"/> Check cab recirculating air filter
<input type="checkbox"/> Check wheel bolt torque	<input type="checkbox"/> Check cab fresh air filter
<input type="checkbox"/> Clean fuel tank inlet screen	<input type="checkbox"/> Clean and tighten battery terminals
Every 10 Hours or Daily	
<input type="checkbox"/> Check engine coolant level	<input type="checkbox"/> Clean engine air intake precleaner screen
<input type="checkbox"/> Check engine oil level	<input type="checkbox"/> Check and clean engine air intake precleaner dust unloader valve
<input type="checkbox"/> Check transmission oil level	<input type="checkbox"/> Lubricate articulation points
<input type="checkbox"/> Check hydraulic system oil level	<input type="checkbox"/> Lubricate yoke and crosshead (grapple skidders only)
<input type="checkbox"/> Check and drain primary fuel filter and water separator	<input type="checkbox"/> Lubricate tong linkage and cylinder pivots (grapple skidders only)
<input type="checkbox"/> Check and drain auxiliary fuel filter and water separator	<input type="checkbox"/> Lubricate arch/boom linkage and cylinder pivots (grapple skidders only)
Every 100 Hours	
<input type="checkbox"/> Lubricate park brake seals	<input type="checkbox"/> Lubricate winch fairlead rollers (if equipped, grapple skidders only)
<input type="checkbox"/> Lubricate front axle pivots, pinion seal, and hydraulic steering cylinder pins	<input type="checkbox"/> Purge rear bogie axle slewing ring seals
<input type="checkbox"/> Lubricate blade and cylinder pivots	
Initial Service - 250 Hours	
<input type="checkbox"/> Drain and refill rear bogie axle final drive oil	<input type="checkbox"/> Check rear bogie axle service brake
<input type="checkbox"/> Drain and refill rear bogie axle bogie housing oil	<input type="checkbox"/> Drain and refill rear bogie axle housing and differential oil
Every 250 Hours	
<input type="checkbox"/> Take engine oil sample	<input type="checkbox"/> Check rear bogie axle mounting hardware
Initial Service—500 Hours	
<input type="checkbox"/> Drain and refill axle oil	<input type="checkbox"/> Replace front axle oil filter
Every 500 Hours	
<input type="checkbox"/> Drain and refill engine oil and replace filter	<input type="checkbox"/> Remove and clean open crankcase ventilation (OCV) hose
<input type="checkbox"/> Inspect engine crankshaft damper (9.0 L engines only)	<input type="checkbox"/> Check engine air intake hoses
<input type="checkbox"/> Replace primary fuel filter and water separator	<input type="checkbox"/> Take transmission oil sample
<input type="checkbox"/> Replace auxiliary fuel filter and water separator	<input type="checkbox"/> Take hydraulic oil sample
<input type="checkbox"/> Replace final fuel filter	<input type="checkbox"/> Take front axle oil sample
<input type="checkbox"/> Check axle oil level	<input type="checkbox"/> Take rear bogie axle oil samples
<input type="checkbox"/> Check rear bogie axle service brake	<input type="checkbox"/> Take park brake oil sample

Service Intervals—C or D Engine	
<input type="checkbox"/> Check park brake oil level	<input type="checkbox"/> Take engine coolant sample
<input type="checkbox"/> Lubricate front, rear, and articulation drive shafts	<input type="checkbox"/> Take diesel fuel sample
<input type="checkbox"/> Lubricate rear bogie axle pinion seal	<input type="checkbox"/> Take winch gear case oil sample (if equipped)
<input type="checkbox"/> Adjust grapple damper (grapple skidders only)	
Every 1000 Hours	
<input type="checkbox"/> Drain and refill park brake oil	<input type="checkbox"/> Drain rear bogie axle service brake leak oil
<input type="checkbox"/> Replace front axle oil filter	<input type="checkbox"/> Check rear bogie axle brake cylinder breather
<input type="checkbox"/> Lubricate grapple rotate bearing (grapple skidders only)	<input type="checkbox"/> Drain and refill rear bogie axle housing and differential oil
<input type="checkbox"/> Check coolant condition	
Initial Service—2000 Hours	
<input type="checkbox"/> Replace hydraulic system oil filter	
Every 2000 Hours	
<input type="checkbox"/> Drain and refill transmission oil and replace primary transmission oil filter	<input type="checkbox"/> Replace fuel tank breather
<input type="checkbox"/> Drain and refill axle oil	<input type="checkbox"/> Drain and refill rear bogie axle bogie housing oil
<input type="checkbox"/> Check and adjust engine valve lash	<input type="checkbox"/> Drain and refill rear bogie axle final drive oil
Every 4000 Hours	
<input type="checkbox"/> Drain and refill hydraulic system oil	<input type="checkbox"/> Drain and refill winch oil (if equipped)
<input type="checkbox"/> Replace hydraulic system oil filter	<input type="checkbox"/> Replace secondary transmission oil filter
<input type="checkbox"/> Replace hydraulic reservoir breather filter	<input type="checkbox"/> Replace engine crankshaft damper
Every 6000 Hours	
<input type="checkbox"/> Drain and refill engine cooling system	
Every 10 000 Hours	
<input type="checkbox"/> Replace engine drive shaft	