

REPLACEMENT PARTS GUIDE

460E II Articulated Dump Truck (PIN: 1DW460E_ _ _F708125—)



Steering Cylinder Seals

[AT454030](#)

Interval (hrs) - As Required.



Hydraulic System Return Filter Element

[AT335977](#)

Interval (hrs) - 4000.



AXLE OIL FILTER

[AT418095](#)

Interval (hrs) - 2000.



TRANSMISSION OIL FILTER

[AT468647](#)

Interval (hrs) - 2000.



HYDRAULIC RESERVOIR BREATHER

[AM39653](#)

Interval (hrs) - 4000.



ENGINE ROCKER ARM COVER GASKET(LOWER) - [R529889](#)

Interval (hrs) - 2000.



ENGINE ROCKER ARM COVER GASKET(UPPER)

[R531581](#)

Interval (hrs) - 2000.



FUEL TANK BREATHER

[H216169](#)

Interval (hrs) - 2000.



ENGINE ROCKER ARM COVER GASKET(UPPER)

[R531582](#)

Interval (hrs) - 2000.



CAB RECIRCULATING AIR FILTER

[AT307501](#)

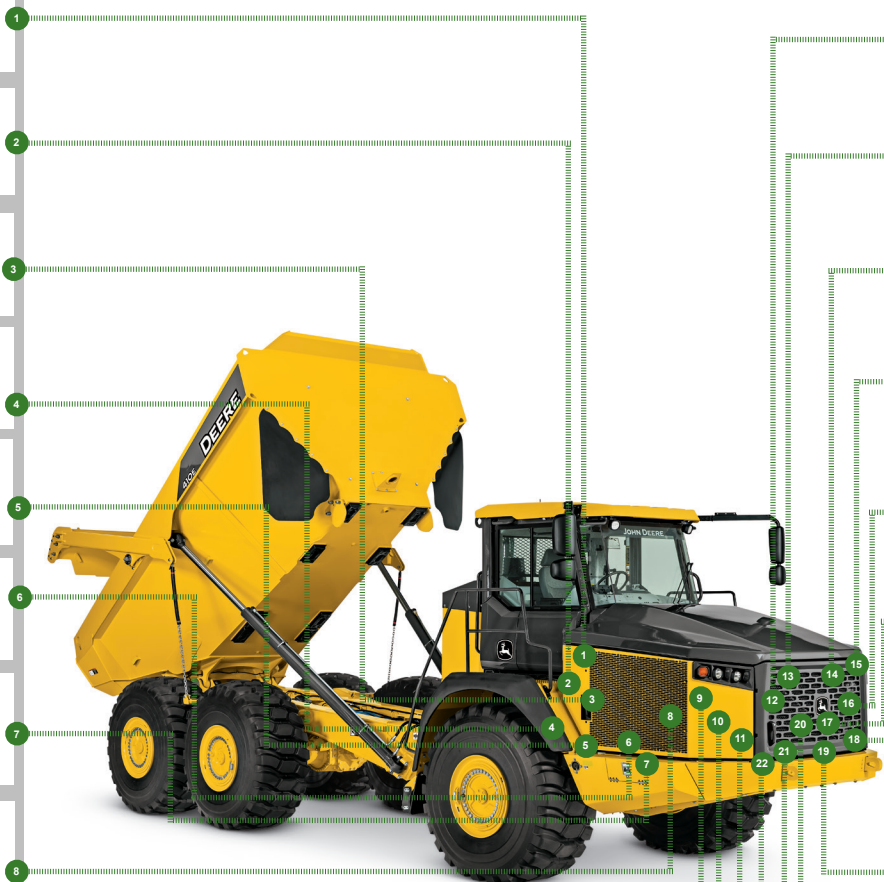
Interval (hrs) - As Required.



PRIMARY ENGINE AIR FILTER ELEMENT

[RE261960](#)

Interval (hrs) - 2000.



PRIMARY FUEL FILTER ELEMENT

[RE539465](#)

Interval (hrs) - 500.



FAST FILL FUEL BREATHER (IF EQUIPPED)

[T225008](#)

Interval (hrs) - 500.



IN-LINE DIESEL EXHAUST FLUID (DEF)

FILTER - [DZ124403](#)

Interval (hrs) - 6000.



CAB FRESH AIR FILTER

[AT191102](#)

Interval (hrs) - As Required.



DIESEL EXHAUST FLUID (DEF) DOSING

UNIT FILTER - [DZ114640](#)

Interval (hrs) - 2000.



ENGINE OIL FILTER²

[RE572785](#)

Interval (hrs) - 500.



FINAL FUEL FILTER ELEMENT

[DZ112918](#)

Interval (hrs) - 500.



DIESEL PARTICULATE FILTER (DPF) (COMPONENT OF EXHAUST FILTER)

[DZ100175](#)

Interval (hrs) - As Required.



DIESEL EXHAUST FLUID (DEF) TANK BREATHER FILTER - [H216169](#)

Interval (hrs) - 6000.



SECONDARY ENGINE AIR FILTER

ELEMENT - [RE230985](#)

Interval (hrs) - 6000.



AUXILIARY FUEL FILTER WITH WATER SEPARATOR (IF EQUIPPED) - [AT365869](#)

Interval (hrs) - 500.



CLICK PART NUMBER TO BUY

*See operator's manual for additional details.

OIL & CAPACITIES INFORMATION

460E II Articulated Dump Truck (PIN: 1DW460E__ _F708125—)

Part Description	Qty or Capacity	Change Interval In Hours
John Deere Plus-50™ II Engine Oil ^{2,6}	43.0 L (11.4 gal)	500
John Deere HD Synthetic Transmission Fluid ^{2,6}	60.0 L (15.9 gal)	2000
John Deere Hy-Gard™ Front Axle Oil ^{2,6}	62.0 L (16.4 gal)	2000
John Deere Hy-Gard™ Middle Axle Oil ^{2,6}	62.0 L (16.4 gal)	2000
John Deere Hy-Gard™ Rear Axle Oil ^{2,6}	68.0 L (18.0 gal)	2000
John Deere Hydrau™ Hydraulic System Oil ⁶	176.0L (46.5 gal)	4000
John Deere COOL-GARD™ II Pre-Mix	90.0L (23.8 gal)	6000

OIL & CAPACITIES INFORMATION

460E II Articulated Dump Truck (PIN: 1DW460E_ _ _F708125—)

Fluid Analysis Kits ⁷			
Part Description	Part Number	Qty or Capacity	Change Interval In Hours
Diesel Engine Oil Kit	AT346594	1	250
Transmission Oil Kit	AT346594	1	500
Axle Oil Kit	AT346594	3	500
Hydraulic Oil Kit	AT346594	1	500
Diesel Fuel Kit	TY27329	1	500
Engine Coolant Kit	TY27787	1	500

¹ Perform initial service once after the first 500 hours of operation.

² Interval not to exceed 12 months.

³ Interval not to exceed 24 months.

⁴ Lubricate every 50 hours if operating in deep mud or water.

⁵ Interval not to exceed 3 years.

⁶ See operator's manual for recommended oil type and oil viscosities based on operating temperatures.

⁷ Based on fluid analysis results, intervals may need to be adjusted for operating conditions. Consult an authorized John Deere dealer.

Plus-50 is a trademark of Deere & Company

Hydrau is a trademark of Deere & Company

Hy-Gard is a trademark of Deere & Company

Cool-Gard is a trademark of Deere & Company

Services Intervals

As Required	
<input type="checkbox"/> Clean and tighten battery terminals	<input type="checkbox"/> Clean axle suction screens
<input type="checkbox"/> Drain primary and auxiliary fuel filter with water separators	<input type="checkbox"/> Inspect steering cylinder seals
<input type="checkbox"/> Check engine air cleaner elements	<input type="checkbox"/> Check cab air filters
<input type="checkbox"/> Check windshield washer fluid level	<input type="checkbox"/> Service exhaust filter
<input type="checkbox"/> Inspect serpentine belt	<input type="checkbox"/> Lubricate engine-to-transmission drive shaft sliding joint
<input type="checkbox"/> Clean cooler cores	<input type="checkbox"/> Check service brake disc wear
<input type="checkbox"/> Inspect tires and check pressure	<input type="checkbox"/> Check rear camera (if equipped)
<input type="checkbox"/> Check wheel bolt torque	
Every 10 Hours or Daily	
<input type="checkbox"/> Check engine oil level	<input type="checkbox"/> Check hydraulic system oil level
<input type="checkbox"/> Check dust unloader valve	<input type="checkbox"/> Check transmission oil level
<input type="checkbox"/> Check engine coolant level	
Every 50 Hours or Weekly	
<input type="checkbox"/> Lubricate articulation joint, oscillation joint, and through-drive bearing	<input type="checkbox"/> Lubricate tailgate pivots (if equipped)
<input type="checkbox"/> Lubricate greaseable steering cylinder pins	<input type="checkbox"/> Lubricate bin pivots
<input type="checkbox"/> Lubricate lift cylinders	<input type="checkbox"/> Inspect automatic lubrication components (if equipped)
Every 250 Hours	
<input type="checkbox"/> Take engine oil sample	
Initial Service - 500 Hours ¹	
<input type="checkbox"/> Replace axle oil filters ²	<input type="checkbox"/> Run load sense calibration (cab monitor)
<input type="checkbox"/> Rerun transmission clutch calibration (cab monitor)	
Every 500 Hours	
<input type="checkbox"/> Check hybrid battery electrolyte level (if equipped)	<input type="checkbox"/> Refill automatic lubrication grease reservoir (if equipped)
<input type="checkbox"/> Take diesel fuel sample	<input type="checkbox"/> Replace auxiliary fuel filter with water separator (if equipped)
<input type="checkbox"/> Take axle oil sample	<input type="checkbox"/> Replace final fuel filter
<input type="checkbox"/> Take transmission oil sample	<input type="checkbox"/> Drain and refill engine oil and replace filter ²
<input type="checkbox"/> Take coolant sample	<input type="checkbox"/> Check air intake hoses and charge air cooler tube couplings
<input type="checkbox"/> Take hydraulic oil sample	<input type="checkbox"/> Replace fuel tank breather (if equipped) with fast fill
<input type="checkbox"/> Replace primary fuel filter with water separator	<input type="checkbox"/> Check park brake pad wear and lubricate linkage
Every 1000 Hours	
<input type="checkbox"/> Check coolant condition	<input type="checkbox"/> Check and adjust dump body shock pads
<input type="checkbox"/> Check axle oil levels	

Services Intervals

Every 2000 Hours	
<input type="checkbox"/> Replace primary air cleaner element	<input type="checkbox"/> Replace transmission oil filters ³
<input type="checkbox"/> Replace axle oil filters ²	<input type="checkbox"/> Drain and refill transmission oil ³
<input type="checkbox"/> Check and adjust engine valve lash	<input type="checkbox"/> Lubricate axle seals ⁴
<input type="checkbox"/> Replace fuel tank breather filter	<input type="checkbox"/> Clean and inspect axle breathers
<input type="checkbox"/> Drain and refill axle oil ²	<input type="checkbox"/> Replace diesel exhaust fluid (DEF) dosing unit filter ⁵
<input type="checkbox"/> Run transmission clutch calibration (cab monitor)	<input type="checkbox"/> Inspect auto-lube internal pump filter (if equipped)
Every 4000 Hours	
<input type="checkbox"/> Clean hydraulic fan drive case drain in-line screen	<input type="checkbox"/> Drain and refill hydraulic system oil
<input type="checkbox"/> Clean hydraulic system fill strainer	<input type="checkbox"/> Replace hydraulic reservoir breather filter
<input type="checkbox"/> Replace hydraulic system return filter	<input type="checkbox"/> Perform load sense calibration (cab monitor)
<input type="checkbox"/> Clean hydraulic pump case drain in-line screen	
Every 6000 Hours	
<input type="checkbox"/> Replace secondary air cleaner element	<input type="checkbox"/> Replace in-line diesel exhaust (DEF) filter ⁵
<input type="checkbox"/> Drain and refill engine cooling system	<input type="checkbox"/> Replace diesel exhaust (DEF) tank breather filter
<input type="checkbox"/> Inspect driveline torsional coupler	