

744K-II/824K-II LOADERS

226–248 kW (303–333 net hp)



JOHN DEERE



Productivity inspired.

Serious productivity demands serious thinking. Many of the numerous advantages of the 744K-II and 824K-II came from the brightest minds in the industry — our Customer Advocate Group. Armed with insights from loader owners and users like you, we equipped these productive material movers with larger material-handling buckets for all models to reduce fill time in processed aggregates, better retain loads, and ultimately conserve fuel. Higher-capacity axles with standard axle cooling and filtration for heavy-duty maneuverability in demanding terrain. Self-adjusting wet-disc brakes for extended wear life and sure stops. Advanced onboard diagnostics with push-button customization of machine operation and response. All to help increase productivity and uptime, while lowering daily operating costs. Read on to learn how the big ideas found in these loaders will benefit your operation.

Specifications	744K-II	824K-II
Net Peak Power	226 kW (303 hp)	248 kW (333 hp)
Bucket Capacity	4.0–4.5 m ³ (5.25–5.85 cu. yd.)	4.6–5.2 m ³ (6.0–6.75 cu. yd.)
Z-Bar:		
Tipping Load, 40-deg. Full Turn, No Tire Deflection	17 182 kg (37,880 lb.)	17 597 kg (38,795 lb.)
Breakout Force	19 367 kg (42,697 lb.)	18 718 kg (41,266 lb.)
Operating Weight	25 314 kg (55,808 lb.)	26 800 kg (59,083 lb.)



Exceptional powertrain and hydraulic performance helps maintain quick ground speed and boom lift, even on steep ramps, for faster cycles.

Impressive torque reserves top out at 57 percent in the 824K-II. It's a Deere loader advantage that helps maintain good boom and bucket speed in and out of the pile, for heaped loads, even in wet or hard-packed material.

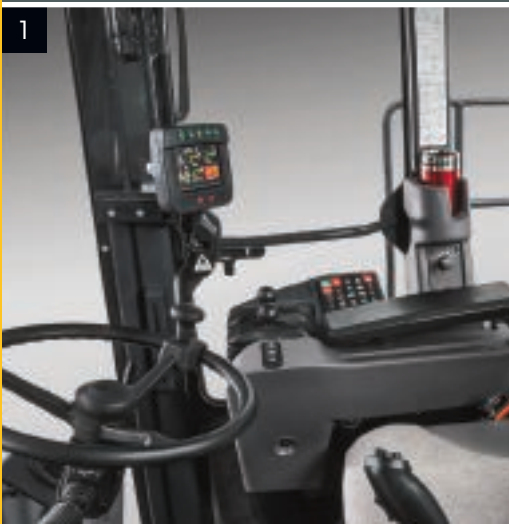
Fluid-efficient Deere PowerTech™ diesels provide generous displacement, power, and lugging ability.

Low center of gravity and optimized fore-and-aft balance deliver solid stability and full-turn tipping-load capacities.

Expand your operator's comfort zone.

What operator wouldn't be more productive in the high-back air-ride seat of a K Series-II Loader? An enhanced multifunction monitor displays operating, diagnostic, and maintenance info on a color LCD screen with easy-on-the-eyes clarity. Expansive tinted front glass and a low-profile console provide a commanding view of the work ahead. Quiet and spacious cab boasts generous legroom and exceptional ergonomics including fatigue-beating features like seat-mounted loader controls. And an expanded sealed-switch module with keyless start enables easy push-button operation of even more functions.

1. Spacious front glass, low-profile console, and large side and rear windows allow for 360-deg. visibility.
2. Keyless-start security system stores up to 10 operator-specific standard security codes to help prevent unauthorized machine operation.
3. Slip-resistant steps, platforms, and handrails enable uninterrupted three-point access. There are no crossbars, decreasing the risk of skids.





Available premium high/wide-back heated air-suspension seat adjusts multiple ways, for daylong comfort and support.

Joystick steering and hydraulic levers are within easy reach and move with the operator, for more control with less fatigue.

Automotive-style directional louvers provide effective airflow to help keep the glass clear and pressurized cab comfortable.

Front and rear worklights stay on for up to three mins. after the engine is shut down, illuminating the way for an easier exit.

You'll find plenty of places to stow a coffee cup, cooler, and other items. Standard eight-amp converter (15 and 30 amp are optional) and a 12-volt outlet provide convenient power for cell phones and other electronic devices.

Get in touch with your productive side.

If you want to get a handle on increased productivity, put your operator behind the controls of a 744K-II or 824K-II Loader. Its enhanced multifunction LCD color monitor provides a wealth of machine info. And enables an operator to customize machine operation and response, weigh each bucket load, and view the action out back — all at the push of a button.





Multi-language color LCD monitor provides push-button access to an array of machine information and control:

1. Vital and general operating data, including transmission mode, gear, engine rpm, and ground speed.
2. Exclusive integrated tire monitoring reports pressures and temperatures on the monitor and remotely through JDLink™ Ultimate, to help reduce tire wear and replacement cost.
3. Customized machine settings such as Quick Shift, Auto-to-1st, and Ride Control. So you can match operating characteristics to specific jobs and conditions.

Programmable clutch cutoff increases productivity in all kinds of conditions. Engaging the brakes disconnects the transmission while maintaining high engine speed, for smooth dumps, fast cycles, and no machine rollback.

Boom-height kick-out sets maximum desired dump height, while return-to-carry determines lowered-boom position. Use these K Series-II advantages to speed production in repetitive loading applications.

Optional rearview camera provides “eyes-in-the-back-of-the-head” visibility. And rear-object-detection radar gives an audible alert of approaching objects. It’s a “must-have” for high-traffic jobsites.

Exhaust filter operation and maintenance status are indicated with warning lights and on-screen displays. Periodic active and passive regeneration automatically clean the filter without impacting machine productivity.

1




2



3





Hard work was never this easy.

Big productivity shouldn't require a lot of extra effort. And it won't on a 744K-II or 824K-II Loader. John Deere PowerTech EPA Final Tier 4 (FT4)/EU Stage IV diesels provide impressive acceleration and torque, along with the power needed for fast and full bucket fills. Larger, higher-capacity axles help tackle the toughest terrain. Generous hydraulic flow provides excellent low-engine-speed performance along with quick steering response and boom-up speed. Combined with load-sensing closed-center hydraulics, low-effort controls, and smooth-shifting PowerShift™ transmission, maximum productivity comes naturally. To “weigh in” on which K Series-II Loader is right for your operation, see your John Deere dealer.

Standard five-speed transmission with torque-converter lockup in gears 2–5 increases acceleration, speeds cycles, and optimizes power and fuel efficiency during transport, roading, and ramp climbing.

Responsive steering combines with full 80-deg. articulation for exceptional maneuverability in tight quarters — and faster cycle times.

Load-sensing closed-center hydraulics deliver only the power required for smooth boom and bucket functions. So there's no wasted power or fuel.

1. Ride control smooths travel, allowing these loaders to navigate jobsites more quickly without losing their loads. Auto-actuation travel speed is operator settable between 1.5 and 24 km/h (0.5 and 15 mph).
2. Available joystick steering offers fatigue-beating comfort and is ideal for V-pattern truck loading. It adapts to ground speed to deliver smooth low-effort control, even during load-and-carry operations.

3. Choose either single-lever joystick or two-lever fingertip pilot-operated hydraulic controls. Joystick version is equipped with an F-N-R selector for convenient direction and full-range gear changes. Both include our innovative Quick-Shift feature for push-button gear changes, one gear at a time.



Explore your options.

Standard equipped with plenty of production-enhancing features, K Series-II Loaders can handle almost anything. But if yours isn't just any application, we've got you covered with a wide variety of factory- or dealer-installed options. Work in a high-debris, extreme-temperature, or corrosive environment? Or emissions-sensitive areas? Need a High-Lift boom, a larger material-handling bucket, or long-life cutting edges to help maximize productivity and minimize costs? We can equip your loader with exactly what you need for your kind of work.



Corrosion package shields electrical components and connections for longer life — so corrosion won't short-circuit productivity.

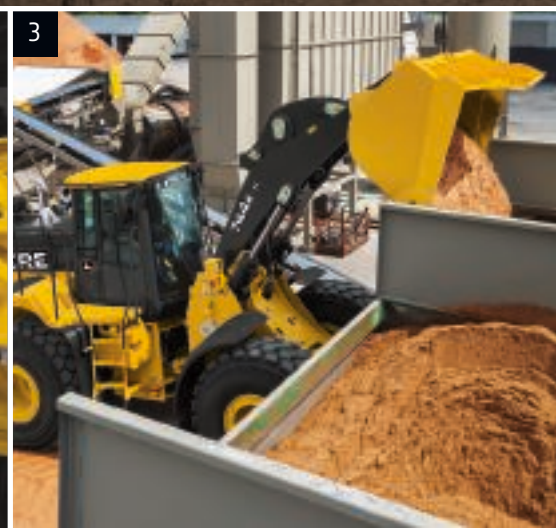
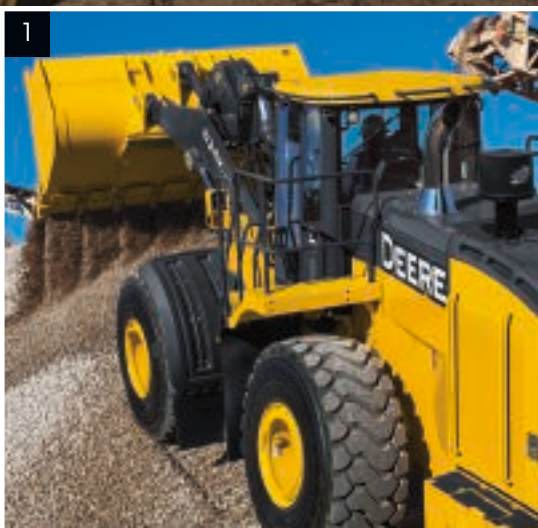
Advanced air-screen kits protect the engine and cooling system from debris while increasing airflow and preventing overheating.

High-Lift loaders feature an optional factory-installed boom that extends boom height so you can move more material and push productivity to even greater heights.



1. Wheel-spin control boosts productivity in loose material or troublesome ground conditions. Available automatic differential lock engages as soon as a tire begins to slip, to help improve traction.
2. Axle choices include manually actuated front differential lock with conventional rear axle, front and rear differential locks, and an automatic locking option that can be added to either.

3. LOADRITE™ L2180™ is fully integrated with the JDLink Ultimate telematics system — part of the John Deere WorkSight™ suite of business-optimization solutions. This gives instant access to production information including total bucket loads, trucks loaded, and totals by material, in addition to other JDLink data, to help increase loading efficiency and track material movement, for improved profitability.





Nothing runs like a Deere, because nothing is built like one.

When you've got hungry hoppers or empty trucks depending on your loader, downtime is unacceptable. Boost your uptime (and your bottom line) with John Deere loader advantages such as solid-state electronics, highly efficient Quad-Cool™, and advanced diagnostic monitors. You'll also benefit from traditional Deere durability features such as heavy-duty wet-sleeve diesels, four-plate loader towers, and double-tapered articulation-joint roller bearings. Plus, booms and mainframes so tough they're warranted for three years or 10,000 hours. When you know how they're built, you'll run a Deere.

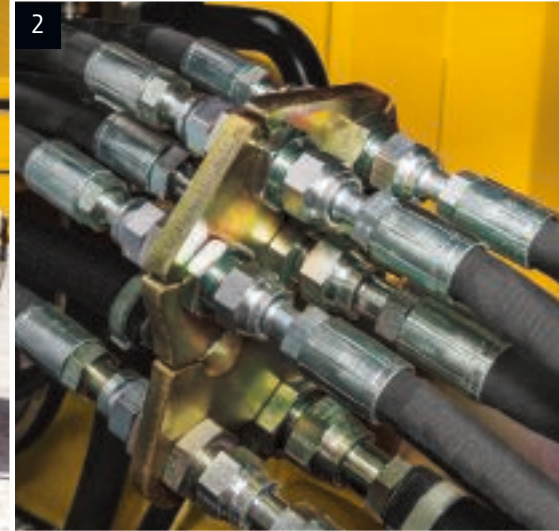
Highly reliable circuit-board technology and sealed solid-state switches reduce the need for fuses, relays, and connectors. Electrical integrity is durable and uncompromised.

Large-capacity fuel tank lets you run longer between fill-ups. A fast-fill option gets you back in the rat race more quickly.

Automatic park brake, bypass-start protection, continuous handrails, and wide slip-resistant steps and platforms help keep operators out of harm's way.

3-mm (0.12 in.) side-screen perforations act as a "first filter" to catch airborne debris and prevent overheating.

Larger, higher-capacity heavy-duty axles with standard axle cooling and filtration increase durability in demanding conditions. Self-adjusting wet-disc brakes help provide long life and sure stops.



1. Our FT4/Stage IV diesels meet emission regulations without sacrificing power or torque. We built on our Interim Tier 4 (IT4)/Stage IIIB solution to deliver the best combination of performance, efficiency, and reliability. This technology is simple, fluid efficient, fully integrated, and fully supported. It employs field-proven cooled exhaust gas recirculation (EGR), easy-to-maintain high-uptime exhaust filters, and selective catalytic reduction (SCR).

2. Bulkhead fittings eliminate long hoses, simplifying replacement and component exchange.

3. Quad-Cool design places coolers in a unique boxed configuration that's isolated from engine heat, for increased efficiency and durability. Optional hydraulic reversing fan automatically reverses at predetermined intervals, or can be programmed through the monitor, to eject debris from the cores.

The buck stops here.

Servicing big iron doesn't have to be a big production. And it isn't on a K Series-II Loader. Swing open the large side shields and you'll see the many ways these loaders minimize maintenance. Our unique Quad-Cool system and swing-out fan provide wide-open access to both sides of the individually mounted coolers, simplifying cleanout. Grouped same-side service points make quick work of the daily routine. Easy-to-read sight gauges, quick-change filters, extended service intervals, and advanced self-diagnostics plus numerous other time- and money-saving features help make maintenance manageable.

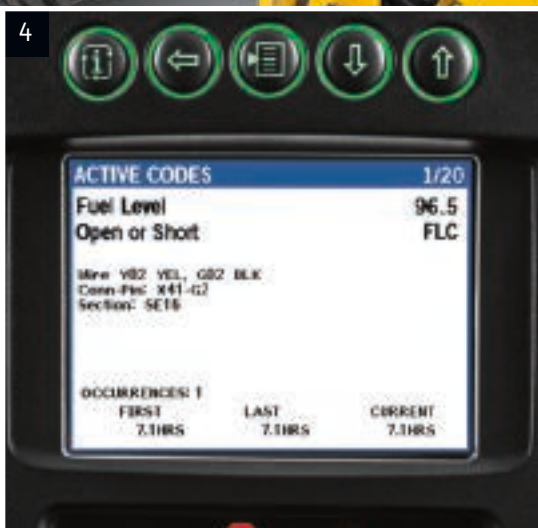
1. Color-coded fluid-sample and diagnostic test ports help speed preventive maintenance and troubleshooting. Noninvasive design helps prevent contamination.
2. Vertical spin-on engine, transmission, and in-tank hydraulic filters; quick-release fuel filters; and environmentally friendly fluid drains allow quick, no-spill changes.
3. 500-, 2,000-, and 4,000-hour engine, transmission, and hydraulic oil and filter intervals decrease planned downtime and expense. Available quick fluid-evacuation system helps speed servicing.
4. If something goes wrong, the easy-to-navigate LCD monitor displays diagnostic messages and offers possible solutions to help you get back up and running quickly.





John Deere WorkSight is an exclusive suite of telematics solutions that increases uptime while lowering operating costs. At its heart, JDLink Ultimate machine monitoring provides real-time utilization data and alerts to help you maximize productivity and efficiency while minimizing downtime. Remote diagnostics enable your dealer to read codes, record performance data, and even update software without a trip to the jobsite.

John Deere Ultimate Uptime, featuring John Deere WorkSight, is a customizable support solution available exclusively from your Deere dealer. This flexible offering maximizes equipment availability with standard John Deere WorkSight capabilities that can help prevent future downtime and speed repairs when needed. In addition to the base John Deere WorkSight features, our dealers work with you to build an uptime package that meets the specific needs of your machine, fleet, project, and business, including customized maintenance and repair agreements, onsite parts availability, extended warranties, fluid sampling, response-time guarantees, and more.



Auto-idle automatically applies the brakes and reduces engine speed to help conserve fuel after an operator-determined period of inactivity. Auto shutdown turns off the engine after an extended period of machine idleness.

Maintenance personnel will appreciate the practical locations and ease with which powertrain, hydraulic, and cab filters are replaced. Common hydraulic and transmission fluid- and filter-change intervals further simplify service.

744K-II



Engine		744K-II Z-BAR / HIGH-LIFT			
Manufacturer and Model	John Deere PowerTech™ PSS 6090	John Deere PowerTech™ Plus 6090H	John Deere PowerTech™ 6090H	John Deere PowerTech™ 6090H	
Non-Road Emission Standard	EPA Final Tier 4/EU Stage IV	EPA Tier 3/EU Stage IIIA	EPA Tier 3/EU Stage IIIA	EPA Tier 2/EU Stage II	
Cylinders	6	6	6	6	
Valves per Cylinder	4	4	4	4	
Displacement	9.0 L (548 cu. in.)	9.0 L (548 cu. in.)	9.0 L (548 cu. in.)	9.0 L (548 cu. in.)	
Net Peak Power (ISO 9249)	226 kW (303 hp) at 1,500 rpm	227 kW (304 hp) at 1,500 rpm	227 kW (304 hp) at 1,500 rpm	227 kW (304 hp) at 1,500 rpm	
Net Peak Torque (ISO 9249)	1455 Nm (1,073 lb.-ft.) at 1,500 rpm	1456 Nm (1,074 lb.-ft.) at 1,400 rpm	1456 Nm (1,074 lb.-ft.) at 1,400 rpm	1456 Nm (1,074 lb.-ft.) at 1,400 rpm	
Net Torque Rise	50%	47%	47%	47%	
Fuel System (electronically controlled)	High-pressure common rail	High-pressure common rail	High-pressure common rail	High-pressure common rail	
Lubrication	Full-flow spin-on filter and integral cooler	Full-flow spin-on filter and integral cooler	Full-flow spin-on filter and integral cooler	Full-flow spin-on filter and integral cooler	
Aspiration	Series turbocharged, charge air cooled	Turbocharged, charge air cooled	Turbocharged, charge air cooled	Turbocharged, charge air cooled	
Air Cleaner	Under-hood, dual-element dry type, restriction indicator in cab monitor for service				
Cooling					
Fan Drive	Hydraulically driven, proportionally controlled, fan aft of coolers	Hydraulically driven, proportionally controlled, fan aft of coolers	Hydraulically driven, proportionally controlled, fan aft of coolers	Hydraulically driven, proportionally controlled, fan aft of coolers	
Electrical					
Electrical System	24 volt with 130-amp alternator	24 volt with 100-amp alternator	24 volt with 100-amp alternator	24 volt with 100-amp alternator	
Batteries (2 – 12 volt)	1,400 CCA (each)	1,400 CCA (each)	1,400 CCA (each)	1,400 CCA (each)	
Transmission System					
Type	Countershaft-type PowerShift™				
Torque Converter	Single stage, dual phase with freewheeling stator				
Shift Control	Electronically modulated, adaptive, load and speed dependent				
Operator Interface	Steering-column or joystick-mounted F-N-R and gear-select lever; Quick-Shift button on hydraulic lever				
Shift Modes	Manual/auto (1st–5th or 2nd–5th); Quick-Shift button with 2 selectable modes: kick-down or kick-up/down; and 3 adjustable clutch-cutoff settings; change to 1st–5th and 2nd–5th on 5 speed				
	<i>Standard 5-Speed with Lockup Torque Converter</i>		<i>Optional 4-Speed</i>		
Maximum Travel Speeds (with 26.5 R 25, 1 Star L3 tires)	<i>Forward</i>	<i>Reverse</i>	<i>Forward</i>	<i>Reverse</i>	
Range 1	7.4 km/h (4.6 mph)	7.4 km/h (4.6 mph)	6.6 km/h (4.1 mph)	6.6 km/h (4.1 mph)	
Range 2	14.3 km/h (8.9 mph)	14.3 km/h (8.9 mph)	13.8 km/h (8.6 mph)	13.8 km/h (8.6 mph)	
Range 3	22.2 km/h (13.8 mph)	32.3 km/h (20.1 mph)	20.8 km/h (12.9 mph)	29.9 km/h (18.6 mph)	
Range 4	32.2 km/h (20.0 mph)	N/A	40.0 km/h (24.9 mph)	N/A	
Range 5	40.0 km/h (24.9 mph)	N/A	N/A	N/A	
Axles/Brakes					
Final Drives	Heavy-duty inboard-mounted planetary				
Differentials	Hydraulic locking front with conventional rear – standard; dual locking front and rear – optional				
Rear Axle Oscillation, Stop to Stop (with 26.5 R 25, 1 Star L3 tires)	26 deg. (13 deg. each direction)				
Service Brakes (conform to ISO 3450)	Hydraulically actuated, spring released, inboard, sun-gear mounted, oil cooled, self-adjusting, single disc				
Parking Brakes (conform to ISO 3450)	Automatic spring applied, hydraulically released, oil cooled, multi disc				
Tires/Wheels (see page 18 for complete tire adjustments)					
	<i>Tread Width</i>	<i>Width Over Tires</i>			
Michelin 26.5 R 25, 2 Star L3	2298 mm (90.5 in.)	3084 mm (121.4 in.)			
Serviceability					
Refill Capacities	EPA FT4/EU Stage IV	EPA Tier 3/EU Stage IIIA and EPA Tier 2/EU Stage II	EPA Tier 3/EU Stage IIIA and EPA Tier 2/EU Stage II	EPA Tier 3/EU Stage IIIA and EPA Tier 2/EU Stage II	
Fuel Tank with Lockable Cap	477 L (126 gal.)	469 L (124 gal.)	469 L (124 gal.)	469 L (124 gal.)	
Diesel Exhaust Fluid (DEF)	26.3 L (6.9 gal.)	N/A	N/A	N/A	
Cooling System	51.2 L (54.1 qt.)	44.8 L (47.3 qt.)	44.8 L (47.3 qt.)	44.8 L (47.3 qt.)	
Engine Oil with Vertical Spin-On Filter	34 L (36 qt.)	34 L (36 qt.)	34 L (36 qt.)	34 L (36 qt.)	
Transmission Reservoir with Vertical Filter	27.9 L (29.5 qt.)	27.9 L (29.5 qt.)	27.9 L (29.5 qt.)	27.9 L (29.5 qt.)	
Axle Oil (front and rear, each)	55.3 L (58.4 qt.)	55.3 L (58.4 qt.)	55.3 L (58.4 qt.)	55.3 L (58.4 qt.)	
Hydraulic Reservoir and Filter	165.3 L (43.7 gal.)	159 L (42 gal.)	159 L (42 gal.)	159 L (42 gal.)	
Park Brake Oil (wet disc)	0.7 L (24 oz.)	0.7 L (24 oz.)	0.7 L (24 oz.)	0.7 L (24 oz.)	
Hydraulic System/Steering					
Pump (loader and steering)	2 variable-displacement, load-sensing axial-piston pumps; closed-center system				
Maximum Rated Flow at 6895 kPa (1,000 psi) and 2,250 rpm	491 L/m (130 gpm)				
System Relief Pressure (loader and steering)	22 670 kPa (3,288 psi)				
Loader Controls	2-function valve; single- or dual-lever controls; control lever lockout feature; optional 3rd- and 4th-function valve with auxiliary levers				



Hydraulic System/Steering (continued) 744K-II Z-BAR / HIGH-LIFT

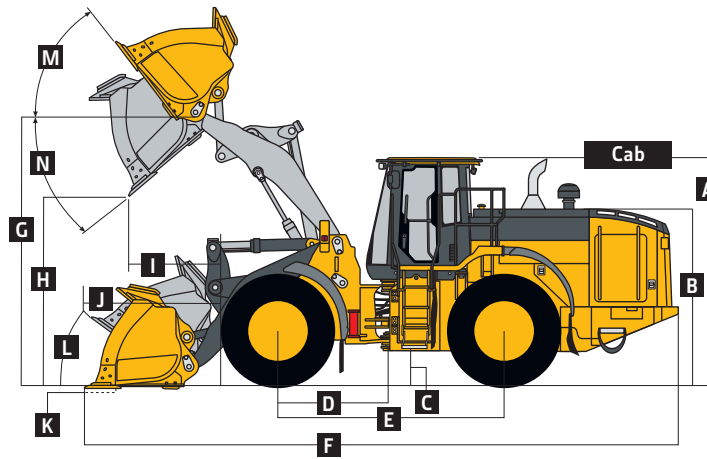
Steering (conforms to ISO 5010)

Type	Power, fully hydraulic
Articulation Angle	80-deg. arc (40 deg. each direction)
Turning Radius (measured to centerline of outside tire)	5.92 m (19 ft. 5 in.)

Hydraulic Cycle Times

Raise	6.8 sec.
Dump	1.6 sec.
Lower (float down)	2.8 sec.
Total	11.2 sec.

Dimensions and Specifications with Pin-On Bucket



744K-II Z-BAR AND HIGH-LIFT LOADERS WITH PIN-ON BUCKET

	Z-Bar	Z-Bar	Z-Bar	Z-Bar	Z-Bar	Z-Bar	Z-Bar	Z-Bar	High-Lift
	4.0-m ³ (5.25 cu. yd.) general-purpose			4.2-m ³ (5.5 cu. yd.) general-purpose enhanced production			4.5-m ³ (5.85 cu. yd.) material-handling enhanced production		4.0-m ³ (5.25 cu. yd.) general-purpose
	bolt-on-edge	teeth and segments	JAGZ™	bolt-on-edge	teeth and segments	JAGZ	bolt-on-edge	JAGZ	bolt-on-edge
Dimensions with Bucket	4.0-m ³ (5.25 cu. yd.) general-purpose			4.2-m ³ (5.5 cu. yd.) general-purpose enhanced production			4.5-m ³ (5.85 cu. yd.) material-handling enhanced production		4.0-m ³ (5.25 cu. yd.) general-purpose
Cutting Edge Type	bolt-on-edge	teeth and segments	JAGZ™	bolt-on-edge	teeth and segments	JAGZ	bolt-on-edge	JAGZ	bolt-on-edge
A Height to Top of Cab	3.50 m (11 ft. 6 in.)	3.50 m (11 ft. 6 in.)	3.50 m (11 ft. 6 in.)	3.50 m (11 ft. 6 in.)	3.50 m (11 ft. 6 in.)	3.50 m (11 ft. 6 in.)	3.50 m (11 ft. 6 in.)	3.50 m (11 ft. 6 in.)	3.50 m (11 ft. 6 in.)
B Hood Height	2.65 m (8 ft. 8 in.)	2.65 m (8 ft. 8 in.)	2.65 m (8 ft. 8 in.)	2.65 m (8 ft. 8 in.)	2.65 m (8 ft. 8 in.)	2.65 m (8 ft. 8 in.)	2.65 m (8 ft. 8 in.)	2.65 m (8 ft. 8 in.)	2.65 m (8 ft. 8 in.)
C Ground Clearance	462 mm (18.2 in.)	462 mm (18.2 in.)	462 mm (18.2 in.)	462 mm (18.2 in.)	462 mm (18.2 in.)	462 mm (18.2 in.)	462 mm (18.2 in.)	462 mm (18.2 in.)	462 mm (18.2 in.)
D Length from Centerline to Front Axle	1.70 m (5 ft. 7 in.)	1.70 m (5 ft. 7 in.)	1.70 m (5 ft. 7 in.)	1.70 m (5 ft. 7 in.)	1.70 m (5 ft. 7 in.)	1.70 m (5 ft. 7 in.)	1.70 m (5 ft. 7 in.)	1.70 m (5 ft. 7 in.)	1.70 m (5 ft. 7 in.)
E Wheelbase	3.46 m (11 ft. 4 in.)	3.46 m (11 ft. 4 in.)	3.46 m (11 ft. 4 in.)	3.46 m (11 ft. 4 in.)	3.46 m (11 ft. 4 in.)	3.46 m (11 ft. 4 in.)	3.46 m (11 ft. 4 in.)	3.46 m (11 ft. 4 in.)	3.46 m (11 ft. 4 in.)
F Overall Length, Bucket on Ground	9.02 m (29 ft. 7 in.)	9.23 m (30 ft. 4 in.)	9.02 m (29 ft. 7 in.)	9.10 m (29 ft. 10 in.)	9.30 m (30 ft. 6 in.)	9.10 m (29 ft. 10 in.)	9.16 m (29 ft. 1 in.)	9.16 m (29 ft. 1 in.)	9.64 m (31 ft. 8 in.)
G Height to Hinge Pin, Fully Raised	4.28 m (14 ft. 1 in.)	4.28 m (14 ft. 1 in.)	4.28 m (14 ft. 1 in.)	4.28 m (14 ft. 1 in.)	4.28 m (14 ft. 1 in.)	4.28 m (14 ft. 1 in.)	4.28 m (14 ft. 1 in.)	4.28 m (14 ft. 1 in.)	4.85 m (15 ft. 11 in.)
H Dump Clearance, 45 deg., Full Height	2.97 m (9 ft. 10 in.)	2.82 m (9 ft. 3 in.)	2.97 m (9 ft. 9 in.)	2.90 m (9 ft. 6 in.)	2.76 m (9 ft. 1 in.)	2.91 m (9 ft. 7 in.)	2.86 m (9 ft. 5 in.)	2.86 m (9 ft. 5 in.)	3.61 m (11 ft. 10 in.)
I Reach, 45-deg. Dump, Full Height	1.17 m (3 ft. 10 in.)	1.30 m (4 ft. 4 in.)	1.17 m (3 ft. 10 in.)	1.21 m (4 ft. 0 in.)	1.33 m (4 ft. 4 in.)	1.21 m (4 ft. 0 in.)	1.25 m (4 ft. 1 in.)	1.25 m (4 ft. 1 in.)	1.38 m (4 ft. 6 in.)
J Reach, 45-deg. Dump, 2.13-m (7 ft. 0 in.) Clearance	1.89 m (6 ft. 2 in.)	1.96 m (6 ft. 5 in.)	1.89 m (6 ft. 2 in.)	1.92 m (6 ft. 4 in.)	1.89 m (6 ft. 6 in.)	1.92 m (6 ft. 4 in.)	1.95 m (6 ft. 5 in.)	1.95 m (6 ft. 5 in.)	2.41 m (7 ft. 11 in.)
K Maximum Digging Depth	105 mm (4.1 in.)	121 mm (4.8 in.)	102 mm (4.0 in.)	111 mm (4.4 in.)	131 mm (5.2 in.)	108 mm (4.3 in.)	116 mm (4.6 in.)	116 mm (4.6 in.)	214 mm (8.4 in.)
L Maximum Rollback at Ground Level	39.2 deg.	39.2 deg.	39.2 deg.	39.2 deg.	39.2 deg.	39.2 deg.	39.2 deg.	39.2 deg.	40.6 deg.
M Maximum Rollback, Boom Fully Raised	54.3 deg.	54.3 deg.	54.3 deg.	54.3 deg.	54.3 deg.	54.3 deg.	54.3 deg.	54.3 deg.	53.1 deg.
N Maximum Bucket Dump Angle, Fully Raised	49.3 deg.	49.3 deg.	49.3 deg.	49.8 deg.	49.8 deg.	49.8 deg.	49.8 deg.	49.8 deg.	39.2 deg.
Loader Clearance Circle, Bucket Carry Position	14.02 m (46 ft. 0 in.)	14.14 m (46 ft. 5 in.)	14.00 m (45 ft. 11 in.)	14.06 m (46 ft. 2 in.)	14.24 m (46 ft. 9 in.)	14.06 m (46 ft. 2 in.)	14.10 m (46 ft. 3 in.)	14.10 m (46 ft. 3 in.)	14.59 m (47 ft. 10 in.)

**Dimensions and Specifications
with Pin-On Bucket (continued)**

744K-II Z-BAR / HIGH-LIFT

	Z-Bar	Z-Bar	Z-Bar	Z-Bar	Z-Bar	Z-Bar	Z-Bar	Z-Bar	High-Lift
	4.0-m ³ (5.25 cu. yd.) general-purpose						4.5-m ³ (5.85 cu. yd.)		4.0-m ³ (5.25 cu. yd.)
	teeth and						material-handling		general-purpose
	enhanced production						enhanced production		
Specifications with Bucket									
	teeth and								
Cutting Edge Type	bolt-on edge		JAGZ		bolt-on edge		JAGZ		bolt-on edge
Capacity, Heaped	4.0 m ³ (5.25 cu. yd.)	4.0 m ³ (5.25 cu. yd.)	4.0 m ³ (5.25 cu. yd.)	4.2 m ³ (5.5 cu. yd.)	4.2 m ³ (5.5 cu. yd.)	4.2 m ³ (5.5 cu. yd.)	4.5 m ³ (5.85 cu. yd.)	4.5 m ³ (5.85 cu. yd.)	4.0 m ³ (5.25 cu. yd.)
Capacity, Struck	3.4 m ³ (4.5 cu. yd.)	3.4 m ³ (4.5 cu. yd.)	3.4 m ³ (4.5 cu. yd.)	3.5 m ³ (4.6 cu. yd.)	3.5 m ³ (4.6 cu. yd.)	3.5 m ³ (4.6 cu. yd.)	3.8 m ³ (4.9 cu. yd.)	3.8 m ³ (4.9 cu. yd.)	3.4 m ³ (4.5 cu. yd.)
Bucket Weight with Bolt-On Cutting Edge	2575 kg (5,677 lb.)	2703 kg (5,959 lb.)	2598 kg (5,728 lb.)	2866 kg (6,318 lb.)	2998 kg (6,609 lb.)	2889 kg (6,369 lb.)	2920 kg (6,437 lb.)	2944 kg (6,490 lb.)	2517 kg (5,549 lb.)
Bucket Width	3.27 m (10 ft. 9 in.)	3.27 m (10 ft. 9 in.)	3.27 m (10 ft. 9 in.)	3.27 m (10 ft. 9 in.)	3.27 m (10 ft. 9 in.)	3.27 m (10 ft. 9 in.)	3.27 m (10 ft. 9 in.)	3.27 m (10 ft. 9 in.)	3.27 m (10 ft. 9 in.)
Breakout Force	19 367 kg (42,697 lb.)	16 900 kg (37,258 lb.)	19 401 kg (42,772 lb.)	18 263 kg (40,263 lb.)	16 093 kg (35,479 lb.)	18 294 kg (40,331 lb.)	17 507 kg (38,596 lb.)	17 459 kg (38,490 lb.)	17 433 kg (38,433 lb.)
Tipping Load, Straight, No Tire Deflection	19 898 kg (43,868 lb.)	19 734 kg (43,506 lb.)	19 869 kg (43,804 lb.)	19 423 kg (42,820 lb.)	19 244 kg (42,426 lb.)	19 403 kg (42,776 lb.)	19 334 kg (42,624 lb.)	19 239 kg (42,415 lb.)	15 747 kg (34,716 lb.)
Tipping Load, Straight, with Tire Deflection	18 591 kg (40,986 lb.)	18 420 kg (40,609 lb.)	18 561 kg (40,920 lb.)	18 138 kg (39,987 lb.)	17 964 kg (39,604 lb.)	18 120 kg (39,948 lb.)	18 051 kg (39,796 lb.)	17 958 kg (39,591 lb.)	14 682 kg (32,368 lb.)
Tipping Load, 37-deg. Partial Turn, No Tire Deflection	17 560 kg (38,713 lb.)	17 386 kg (38,330 lb.)	17 531 kg (38,649 lb.)	17 109 kg (37,719 lb.)	16 931 kg (37,326 lb.)	17 089 kg (37,675 lb.)	17 031 kg (37,547 lb.)	16 937 kg (37,340 lb.)	13 808 kg (30,441 lb.)
Tipping Load, 40-deg. Full Turn, No Tire Deflection	17 182 kg (37,880 lb.)	17 008 kg (37,469 lb.)	17 153 kg (37,816 lb.)	16 735 kg (36,894 lb.)	16 556 kg (36,500 lb.)	16 715 kg (36,850 lb.)	16 658 kg (36,725 lb.)	16 564 kg (36,517 lb.)	13 494 kg (29,749 lb.)
Tipping Load, 40-deg. Full Turn, with Tire Deflection	15 516 kg (34,207 lb.)	15 345 kg (33,830 lb.)	15 486 kg (34,141 lb.)	15 096 kg (33,280 lb.)	14 922 kg (32,897 lb.)	15 078 kg (33,241 lb.)	15 021 kg (33,116 lb.)	14 928 kg (32,911 lb.)	12 186 kg (26,865 lb.)
Rated Operating Load, 50% Full-Turn Tipping Load, with Tire Deflection (conforms to ISO 14397-1)*	7758 kg (17,103 lb.)	7673 kg (16,915 lb.)	7743 kg (17,070 lb.)	7548 kg (16,640 lb.)	7461 kg (16,449 lb.)	7539 kg (16,621 lb.)	7511 kg (16,558 lb.)	7464 kg (16,455 lb.)	6093 kg (13,433 lb.)
Operating Weight	25 314 kg (55,808 lb.)	25 444 kg (56,094 lb.)	25 338 kg (55,861 lb.)	25 587 kg (56,410 lb.)	25 719 kg (56,701 lb.)	25 611 kg (56,463 lb.)	25 576 kg (56,385 lb.)	25 665 kg (56,582 lb.)	25 903 kg (57,106 lb.)

Loader operating information is based on machine with identified linkage and standard equipment, PowerTech PSS 6090 (EPA Final Tier 4/EU Stage IV) engine, ROPS cab, rear cast bumper/counterweight, transmission side-frame guards, bottom guards, standard tires, full fuel tank, and 79-kg (175 lb.) operator. This information is affected by changes in tires, ballast, and different attachments.

*Rated operating capacity based on Deere attachments only.

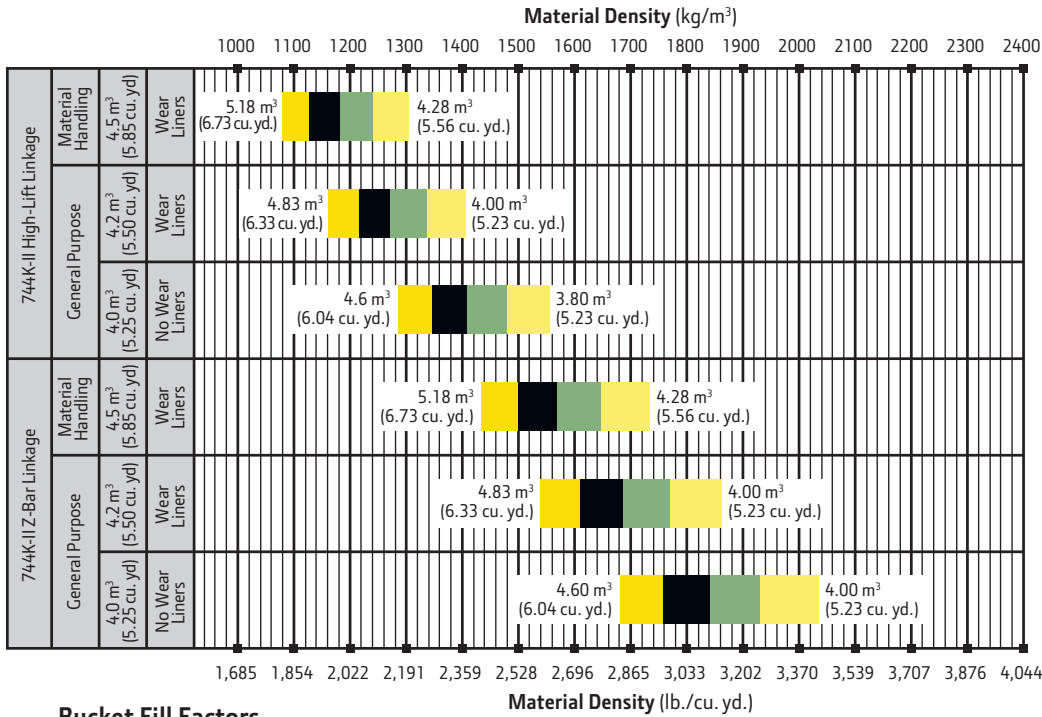
Adjustments to Operating Weights and Tipping Loads with Buckets

Adjustments to operating weights, tipping loads, and tires are based on Z-Bar machine with pin-on 4.0-m³ (5.25 cu. yd.) general-purpose bucket with bolt-on cutting edge, ROPS cab, rear cast bumper/counterweight, transmission side-frame guards, bottom guards, standard tires, full fuel tank, and 79-kg (175 lb.) operator*

Add (+) or deduct (-) kg (lb.) as indicated for loaders with 3-piece rims	Operating Weight	Tipping Load, Straight	Tipping Load,		Tread Width	Width Over Tires	Vertical Height
			37-deg. Partial Turn	40-deg. Full Turn			
John Deere PowerTech PSS 6090	0 kg (0 lb.)	0 kg (0 lb.)	0 kg (0 lb.)	0 kg (0 lb.)	N/A	N/A	N/A
John Deere PowerTech Plus 6090H	-158 kg (-348 lb.)	+447 kg (+986 lb.)	+351 kg (+774 lb.)	+335 kg (+739 lb.)	N/A	N/A	N/A
John Deere PowerTech 6090H	-164 kg (-362 lb.)	+437 kg (+963 lb.)	+342 kg (+754 lb.)	+326 kg (+719 lb.)	N/A	N/A	N/A
Michelin 26.5 R 25, 2 Star L-3	0 kg (0 lb.)	0 kg (0 lb.)	0 kg (0 lb.)	0 kg (0 lb.)	0 mm (0 in.)	0 mm (0 in.)	0 mm (0 in.)
Titan 26.5 R 25, 1 Star L-3	0 kg (0 lb.)	0 kg (0 lb.)	0 kg (0 lb.)	0 kg (0 lb.)	0 mm (0 in.)	-8 mm (-0.3 in.)	4 mm (0.15 in.)
Goodyear 26.5 R 25, 1 Star L-3	-56 kg (-123 lb.)	-42 kg (-93 lb.)	-38 kg (-84 lb.)	-37 kg (-82 lb.)	0 mm (0 in.)	0 mm (0 in.)	4 mm (0.15 in.)
Firestone 26.5-25, 20-Ply L-3	-360 kg (-794 lb.)	-270 kg (-595 lb.)	-242 kg (-533 lb.)	-238 kg (-525 lb.)	0 mm (0 in.)	-30 mm (-1.18 in.)	+41 mm (+1.61 in.)
Firestone 26.5-25, 20-Ply L-5 [§]	+312 kg (+ 688 lb.)	+234 kg (+516 lb.)	+210 kg (+463 lb.)	+206 kg (+454 lb.)	0 mm (0 in.)	-20 mm (-0.8 in.)	+64 mm (+2.51 in.)
4.2-m ³ (5.5 cu. yd.) General-Purpose Enhanced-Production Bucket with Wear Liners	+212 kg (+467 lb.)	-211 kg (-465 lb.)	-212 kg (-467 lb.)	-212 kg (-467 lb.)	0 mm (0 in.)	0 mm (0 in.)	0 mm (0 in.)
4.5-m ³ (5.85 cu. yd.) Material-Handling Enhanced-Production Bucket with Wear Liners	+278 kg (+613 lb.)	-282 kg (-622 lb.)	-283 kg (-624 lb.)	-283 kg (-624 lb.)	0 mm (0 in.)	0 mm (0 in.)	0 mm (0 in.)
High-Lift Boom	+546 kg (+1,204 lb.)	-4115 kg (-9,072 lb.)	-3709 kg (-8,177 lb.)	-3643 kg (-8,031 lb.)	0 mm (0 in.)	0 mm (0 in.)	0 mm (0 in.)

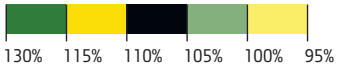
*May change based on vehicle configuration, weight, or tire-pressure adjustments.

[§]Requires 8-deg. rear axle stops.



LOOSE MATERIALS	kg/m³	lb./cu. yd.
Chips, pulpwood	288	486
Cinders (coal, ashes, clinkers)	673	1,134
Clay and gravel, dry	1602	2,700
Clay, compact, solid	1746	2,943
Clay, dry in lump loose	1009	1,701
Clay, excavated in water	1282	2,160
Coal, anthracite, broken, loose	865	1,458
Coal, bituminous, moderately wet	801	1,350
Earth, common loam, dry	1218	2,052
Earth, mud, packed	1843	3,105
Granite, broken	1538	2,592
Gypsum	2275	3,834
Limestone, coarse, sized	1570	2,646
Limestone, mixed sizes	1682	2,835
Limestone, pulverized or crushed	1362	2,295
Sand, damp	2083	3,510
Sand, dry	1762	2,970
Sand, voids, full of water	2083	3,510
Sandstone, quarried	1314	2,214
Shale, broken crushed	1362	2,295
Slag, furnace granulated	1955	3,294
Stone or gravel, 37.5 to 87.5-mm (1.5 to 3.5") size	1442	2,430
Stone or gravel, 18.75-mm (3/4") size	1602	2,700

Bucket Fill Factors



824K-II

Engine		824K-II Z-BAR / HIGH-LIFT			
Manufacturer and Model	John Deere PowerTech™ PSS 6135	John Deere PowerTech™ Plus 6135H	John Deere PowerTech™ 6135H	John Deere PowerTech™ 6135H	
Non-Road Emission Standard	EPA Final Tier 4/EU Stage IV	EPA Tier 3/EU Stage IIIA	EPA Tier 2/EU Stage II	EPA Tier 2/EU Stage II	
Cylinders	6	6	6	6	
Valves per Cylinder	4	4	4	4	
Displacement	13.5 L (824 cu. in.)	13.5 L (824 cu. in.)	13.5 L (824 cu. in.)	13.5 L (824 cu. in.)	
Net Peak Power (ISO 9249)	248 kW (333 hp) at 1,500 rpm	248 kW (333 hp) at 1,600 rpm	248 kW (333 hp) at 1,600 rpm	248 kW (333 hp) at 1,600 rpm	
Net Peak Torque (ISO 9249)	1635 Nm (1,206 lb.-ft.) at 900 rpm	1619 Nm (1,194 lb.-ft.) at 900 rpm	1619 Nm (1,194 lb.-ft.) at 900 rpm	1619 Nm (1,194 lb.-ft.) at 900 rpm	
Net Torque Rise	57%	55%	55%	55%	
Fuel System	Mechanically actuated electronic unit injectors	Mechanically actuated electronic unit injectors	Mechanically actuated electronic unit injectors	Mechanically actuated electronic unit injectors	
Lubrication	Full-flow spin-on filter and integral cooler	Full-flow spin-on filter and integral cooler	Full-flow spin-on filter and integral cooler	Full-flow spin-on filter and integral cooler	
Aspiration	Series turbocharged, charge air cooled	Turbocharged, charge air cooled	Turbocharged, charge air cooled	Turbocharged, charge air cooled	
Air Cleaner	Under-hood, dual-element dry type, restriction indicator in cab monitor for service				
Cooling					
Fan Drive	Hydraulically driven, proportionally controlled, fan aft of coolers	Hydraulically driven, proportionally controlled, fan aft of coolers	Hydraulically driven, proportionally controlled, fan aft of coolers	Hydraulically driven, proportionally controlled, fan aft of coolers	
Electrical					
Electrical System	24 volt with 130-amp alternator	24 volt with 100-amp alternator	24 volt with 100-amp alternator	24 volt with 100-amp alternator	
Batteries (2 – 12 volt)	1,400 CCA (each)	1,400 CCA (each)	1,400 CCA (each)	1,400 CCA (each)	
Transmission System					
Type	Countershaft-type PowerShift™				
Torque Converter	Single stage, dual phase with freewheeling stator				
Shift Control	Electronically modulated, adaptive, load and speed dependent				
Operator Interface	Steering-column or joystick-mounted F-N-R and gear-select lever; Quick-Shift button on hydraulic lever				
Shift Modes	Manual/auto (1st–5th or 2nd–5th); Quick-Shift button with 2 selectable modes: kick-down or kick-up/down; and 3 clutch-cutoff settings adjustable on switch pad				
	<i>Standard 5-Speed with Lockup Torque Converter</i>		<i>Optional 4-Speed</i>		
Maximum Travel Speeds (with 26.5 R 25, 1 Star L3 tires)	<i>Forward</i>	<i>Reverse</i>	<i>Forward</i>	<i>Reverse</i>	
Range 1	8.3 km/h (5.2 mph)	8.3 km/h (5.2 mph)	7.4 km/h (4.6 mph)	7.4 km/h (4.6 mph)	
Range 2	14.9 km/h (9.3 mph)	14.0 km/h (8.7 mph)	13.8 km/h (8.6 mph)	13.8 km/h (8.6 mph)	
Range 3	23.1 km/h (14.4 mph)	33.9 km/h (21.1 mph)	21.0 km/h (13.1 mph)	30.1 km/h (18.7 mph)	
Range 4	33.9 km/h (21.1 mph)	N/A	40.0 km/h (24.9 mph)	N/A	
Range 5	40.0 km/h (24.9 mph)	N/A	N/A	N/A	
Axles/Brakes					
Final Drives	Heavy-duty inboard-mounted planetary				
Differentials	Hydraulic locking front with conventional rear – standard; dual locking front and rear – optional				
Rear Axle Oscillation, Stop to Stop (with 26.5 R 25, 1 Star L3 tires)	26 deg. (13 deg. each direction)				
Service Brakes (conform to ISO 3450)	Hydraulically actuated, spring released, inboard, sun-gear mounted, pressure oil cooled, self-adjusting, single disc				
Parking Brakes (conform to ISO 3450)	Automatic spring applied, hydraulically released, oil cooled, multi disc				
Tires/Wheels (see page 22 for complete tire adjustments)					
	<i>Tread Width</i>	<i>Width Over Tires</i>			
Michelin 26.5 R 25, 1 Star L3	2298 mm (90.5 in.)	3084 mm (121.4 in.)			
Serviceability					
Refill Capacities	EPA FT4/EU Stage IV	EPA Tier 3/EU Stage IIIA and EPA Tier 2/EU Stage II	EPA Tier 3/EU Stage IIIA and EPA Tier 2/EU Stage II	EPA Tier 3/EU Stage IIIA and EPA Tier 2/EU Stage II	
Fuel Tank with Lockable Cap	477 L (126 gal.)	469.4 L (124 gal.)	469.4 L (124 gal.)	469.4 L (124 gal.)	
Diesel Exhaust Fluid (DEF)	26.3 L (6.9 gal.)	N/A	N/A	N/A	
Cooling System	78.75 L (83.2 qt.)	47.4 L (50.1 qt.)	47.4 L (50.1 qt.)	47.4 L (50.1 qt.)	
Engine Oil with Vertical Spin-On Filter	40 L (42.3 qt.)	36 L (38 qt.)	36 L (38 qt.)	36 L (38 qt.)	
Transmission Reservoir with Vertical Filter	27.9 L (29.5 qt.)	27.9 L (29.5 qt.)	27.9 L (29.5 qt.)	27.9 L (29.5 qt.)	
Axle Oil (front and rear, each)	55.3 L (58.4 qt.)	55.3 L (58.4 qt.)	55.3 L (58.4 qt.)	55.3 L (58.4 qt.)	
Hydraulic Reservoir and Filter	165 L (43.7 gal.)	159 L (42 gal.)	159 L (42 gal.)	159 L (42 gal.)	
Park Brake Oil (wet disc)	0.7 L (24 oz.)	0.7 L (24 oz.)	0.7 L (24 oz.)	0.7 L (24 oz.)	
Hydraulic System/Steering					
Pump (loader and steering)	2 variable-displacement, load-sensing axial-piston pumps; closed-center system				
Maximum Rated Flow at 6895 kPa (1,000 psi) and 2,250 rpm	491 L/m (130 gpm)				
System Relief Pressure (loader and steering)	25 166 kPa (3,650 psi)				
Loader Controls	2-function valve; single- or dual-lever controls; control lever lockout feature; optional 3rd- and 4th-function valve with auxiliary levers				

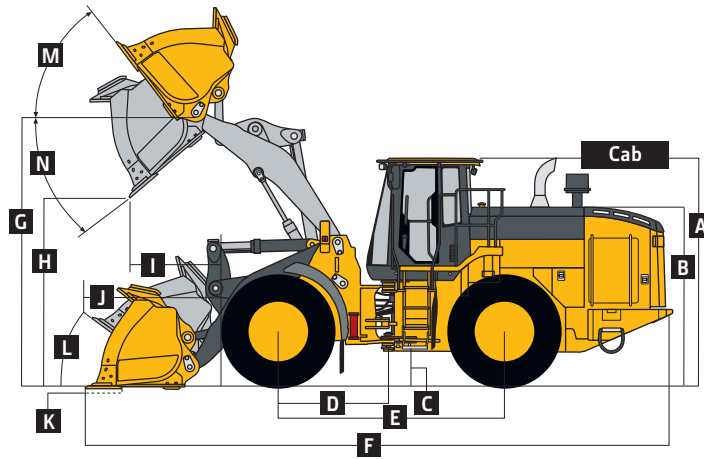


Hydraulic System/Steering (continued) 824K-II Z-BAR / HIGH-LIFT

Steering (conforms to ISO 5010)

Type	Power, fully hydraulic	
Articulation Angle	80-deg. arc (40 deg. each direction)	
Turning Radius (measured to centerline of outside tire)	5.92 m (19 ft. 5 in.)	
Hydraulic Cycle Times	<i>Z-Bar</i>	<i>High-Lift</i>
Raise	5.9 sec.	6.0 sec.
Dump	1.3 sec.	1.3 sec.
Lower (float down)	2.5 sec.	2.6 sec.
Total	9.7 sec.	9.9 sec.

Dimensions and Specifications with Pin-On Bucket



824K-II Z-BAR AND HIGH-LIFT LOADERS WITH PIN-ON BUCKET

	<i>Z-Bar</i>			<i>Z-Bar</i>			<i>Z-Bar</i>		<i>High-Lift</i>	
	4.6-m ³ (6.0 cu. yd.) general-purpose			4.8-m ³ (6.25 cu. yd.) general-purpose enhanced production			5.2-m ³ (6.75 cu. yd.) material-handling enhanced production		4.6-m ³ (6.0 cu. yd.) general-purpose	
Cutting Edge Type	<i>bolt-on-edge</i>	<i>teeth and segments</i>	<i>JAGZ™</i>	<i>bolt-on-edge</i>	<i>teeth and segments</i>	<i>JAGZ</i>	<i>bolt-on-edge</i>	<i>JAGZ</i>	<i>bolt-on-edge</i>	<i>teeth and segments</i>
A Height to Top of Cab	3.55 m (11 ft. 8 in.)	3.55 m (11 ft. 8 in.)	3.55 m (11 ft. 8 in.)	3.55 m (11 ft. 8 in.)	3.55 m (11 ft. 8 in.)	3.55 m (11 ft. 8 in.)	3.55 m (11 ft. 8 in.)	3.55 m (11 ft. 8 in.)	3.55 m (11 ft. 8 in.)	3.55 m (11 ft. 8 in.)
B Hood Height	2.70 m (8 ft. 10 in.)	2.70 m (8 ft. 10 in.)	2.70 m (8 ft. 10 in.)	2.70 m (8 ft. 10 in.)	2.70 m (8 ft. 10 in.)	2.70 m (8 ft. 10 in.)	2.70 m (8 ft. 10 in.)	2.70 m (8 ft. 10 in.)	2.70 m (8 ft. 10 in.)	2.70 m (8 ft. 10 in.)
C Ground Clearance	462 mm (18.2 in.)	462 mm (18.2 in.)	462 mm (18.2 in.)	462 mm (18.2 in.)	462 mm (18.2 in.)	462 mm (18.2 in.)	462 mm (18.2 in.)	462 mm (18.2 in.)	462 mm (18.2 in.)	462 mm (18.2 in.)
D Length from Centerline to Front Axle	1.70 m (5 ft. 7 in.)	1.70 m (5 ft. 7 in.)	1.70 m (5 ft. 7 in.)	1.70 m (5 ft. 7 in.)	1.70 m (5 ft. 7 in.)	1.70 m (5 ft. 7 in.)	1.70 m (5 ft. 7 in.)	1.70 m (5 ft. 7 in.)	1.70 m (5 ft. 7 in.)	1.70 m (5 ft. 7 in.)
E Wheelbase	3.46 m (11 ft. 4 in.)	3.46 m (11 ft. 4 in.)	3.46 m (11 ft. 4 in.)	3.46 m (11 ft. 4 in.)	3.46 m (11 ft. 4 in.)	3.46 m (11 ft. 4 in.)	3.46 m (11 ft. 4 in.)	3.46 m (11 ft. 4 in.)	3.46 m (11 ft. 4 in.)	3.46 m (11 ft. 4 in.)
F Overall Length, Bucket on Ground	9.28 m (30 ft. 5 in.)	9.48 m (31 ft. 1 in.)	9.28 m (30 ft. 5 in.)	9.38 m (30 ft. 9 in.)	9.59 m (31 ft. 6 in.)	9.37 m (30 ft. 9 in.)	9.44 m (31 ft. 0 in.)	9.44 m (31 ft. 0 in.)	9.77 m (32 ft. 1 in.)	9.95 m (32 ft. 8 in.)
G Height to Hinge Pin, Fully Raised	4.48 m (14 ft. 9 in.)	4.48 m (14 ft. 9 in.)	4.48 m (14 ft. 9 in.)	4.48 m (14 ft. 9 in.)	4.48 m (14 ft. 9 in.)	4.48 m (14 ft. 9 in.)	4.48 m (14 ft. 9 in.)	4.48 m (14 ft. 9 in.)	4.85 m (15 ft. 11 in.)	4.85 m (15 ft. 11 in.)
H Dump Clearance, 45 deg., Full Height	3.19 m (10 ft. 6 in.)	3.06 m (10 ft. 0 in.)	3.20 m (10 ft. 6 in.)	3.12 m (10 ft. 3 in.)	2.97 m (9 ft. 9 in.)	3.12 m (10 ft. 3 in.)	3.07 m (10 ft. 1 in.)	3.08 m (10 ft. 1 in.)	3.63 m (11 ft. 11 in.)	3.52 m (11 ft. 7 in.)
I Reach, 45-deg. Dump, Full Height	1.28 m (4 ft. 2 in.)	1.42 m (4 ft. 8 in.)	1.28 m (4 ft. 2 in.)	1.28 m (4 ft. 4 in.)	1.42 m (4 ft. 10 in.)	1.28 m (4 ft. 4 in.)	1.38 m (4 ft. 6 in.)	1.38 m (4 ft. 6 in.)	1.63 m (5 ft. 4 in.)	1.77 m (5 ft. 10 in.)
J Reach, 45-deg. Dump, 2.13-m (7 ft. 0 in.) Clearance	2.05 m (6 ft. 9 in.)	2.12 m (6 ft. 11 in.)	2.05 m (6 ft. 9 in.)	2.08 m (6 ft. 10 in.)	2.15 m (7 ft. 1 in.)	2.09 m (6 ft. 10 in.)	2.10 m (6 ft. 11 in.)	2.10 m (6 ft. 11 in.)	2.50 m (8 ft. 2 in.)	2.58 m (8 ft. 5 in.)
K Maximum Digging Depth	117 mm (4.6 in.)	130 mm (5.1 in.)	114 mm (4.5 in.)	125 mm (4.9 in.)	145 mm (5.7 in.)	121 mm (4.8 in.)	130 mm (5.1 in.)	127 mm (5.0 in.)	196 mm (7.7 in.)	196 mm (7.7 in.)
L Maximum Rollback at Ground Level	44.3 deg.	44.3 deg.	44.3 deg.	44.3 deg.	44.3 deg.	44.3 deg.	44.3 deg.	44.3 deg.	45.5 deg.	45.5 deg.
M Maximum Rollback, Boom Fully Raised	52 deg.	52 deg.	52 deg.	52 deg.	52 deg.	52 deg.	52 deg.	52 deg.	53 deg.	53 deg.
N Maximum Bucket Dump Angle, Fully Raised	44.1 deg.	44.1 deg.	44.1 deg.	44.6 deg.	44.6 deg.	44.6 deg.	44.6 deg.	44.6 deg.	39.8 deg.	39.8 deg.
Loader Clearance Circle, Bucket Carry Position	14.14 m (46 ft. 5 in.)	14.26 m (46 ft. 9 in.)	14.14 m (46 ft. 5 in.)	14.20 m (46 ft. 7 in.)	14.34 m (47 ft. 1 in.)	14.20 m (46 ft. 7 in.)	14.12 m (46 ft. 9 in.)	14.12 m (46 ft. 9 in.)	14.68 m (48 ft. 2 in.)	14.81 m (48 ft. 7 in.)

**Dimensions and Specifications
with Pin-On Bucket (continued)**

824K-II Z-BAR / HIGH-LIFT

	Z-Bar	Z-Bar	Z-Bar	Z-Bar	Z-Bar	Z-Bar	Z-Bar	Z-Bar	High-Lift	High-Lift
Specifications with Bucket	4.6-m ³ (6.0 cu. yd.) general-purpose			4.8-m ³ (6.25 cu. yd.) general-purpose enhanced production			5.2-m ³ (6.75 cu. yd.) material-handling enhanced production		4.6-m ³ (6.0 cu. yd.) general-purpose	
Cutting Edge Type	<i>bolt-on edge</i>	<i>teeth and segments</i>	<i>JAGZ</i>	<i>bolt-on edge</i>	<i>teeth and segments</i>	<i>JAGZ</i>	<i>bolt-on edge</i>	<i>JAGZ</i>	<i>bolt-on edge</i>	<i>teeth and segments</i>
Capacity, Heaped	4.6 m ³ (6.0 cu. yd.)	4.6 m ³ (6.0 cu. yd.)	4.6 m ³ (6.0 cu. yd.)	4.8 m ³ (6.25 cu. yd.)	4.8 m ³ (6.25 cu. yd.)	4.8 m ³ (6.25 cu. yd.)	5.2 m ³ (6.75 cu. yd.)	5.2 m ³ (6.75 cu. yd.)	4.6 m ³ (6.0 cu. yd.)	4.6 m ³ (6.0 cu. yd.)
Capacity, Struck	4.0 m ³ (5.25 cu. yd.)	4.0 m ³ (5.25 cu. yd.)	4.0 m ³ (5.25 cu. yd.)	4.1 m ³ (5.36 cu. yd.)	4.1 m ³ (5.36 cu. yd.)	4.1 m ³ (5.36 cu. yd.)	4.4 m ³ (5.8 cu. yd.)	4.4 m ³ (5.8 cu. yd.)	4.0 m ³ (5.25 cu. yd.)	4.0 m ³ (5.25 cu. yd.)
Bucket Weight with Bolt-On Cutting Edge	2788 kg (6,146 lb.)	2956 kg (6,517 lb.)	2880 kg (6,349 lb.)	3009 kg (6,634 lb.)	3141 kg (6,927 lb.)	3032 kg (6,684 lb.)	3073 kg (6,775 lb.)	3096 kg (6,826 lb.)	2788 kg (6,146 lb.)	2914 kg (6,423 lb.)
Bucket Width	3.27 m (10 ft. 9 in.)	3.27 m (10 ft. 9 in.)	3.27 m (10 ft. 9 in.)	3.27 m (10 ft. 9 in.)	3.27 m (10 ft. 9 in.)	3.27 m (10 ft. 9 in.)	3.27 m (10 ft. 9 in.)	3.27 m (10 ft. 9 in.)	3.27 m (10 ft. 9 in.)	3.27 m (10 ft. 9 in.)
Breakout Force	18 718 kg (41,266 lb.)	16 537 kg (36,457 lb.)	18 733 kg (41,299 lb.)	17 568 kg (38,731 lb.)	15 562 kg (34,308 lb.)	17 590 kg (38,779 lb.)	16 840 kg (37,126 lb.)	16 858 kg (37,165 lb.)	17 534 kg (38,655 lb.)	17 437 kg (38,443 lb.)
Tipping Load, Straight, No Tire Deflection	20 464 kg (45,115 lb.)	20 348 kg (44,860 lb.)	20 454 kg (45,093 lb.)	19 973 kg (44,033 lb.)	19 794 kg (44,033 lb.)	19 944 kg (43,969 lb.)	19 793 kg (43,363 lb.)	19 793 kg (43,570 lb.)	17 148 kg (37,805 lb.)	17 037 kg (37,560 lb.)
Tipping Load, Straight, with Tire Deflection	19 074 kg (42,051 lb.)	18 960 kg (41,800 lb.)	19 065 kg (42,031 lb.)	18 612 kg (41,032 lb.)	18 438 kg (40,649 lb.)	18 585 kg (40,973 lb.)	18 435 kg (40,642 lb.)	18 408 kg (40,583 lb.)	15 993 kg (35,258 lb.)	15 882 kg (35,014 lb.)
Tipping Load, 37-deg. Partial Turn	17 996 kg (39,674 lb.)	17 880 kg (39,419 lb.)	17 986 kg (39,652 lb.)	17 545 kg (38,680 lb.)	17 366 kg (38,285 lb.)	17 516 kg (38,616 lb.)	17 377 kg (38,309 lb.)	17 377 kg (38,309 lb.)	15 002 kg (33,074 lb.)	14 890 kg (32,827 lb.)
Tipping Load, 40-deg. Full Turn, No Tire Deflection	17 597 kg (38,795 lb.)	17 480 kg (38,537 lb.)	17 586 kg (38,770 lb.)	17 152 kg (37,814 lb.)	16 973 kg (37,419 lb.)	17 123 kg (37,750 lb.)	16 986 kg (37,448 lb.)	16 957 kg (37,384 lb.)	14 654 kg (32,307 lb.)	14 543 kg (32,062 lb.)
Tipping Load, 40-deg. Full Turn, with Tire Deflection	15 795 kg (34,822 lb.)	15 681 kg (34,571 lb.)	15 786 kg (34,802 lb.)	15 387 kg (33,922 lb.)	15 213 kg (33,539 lb.)	15 360 kg (33,863 lb.)	15 225 kg (33,565 lb.)	15 195 kg (33,499 lb.)	13 173 kg (29,041 lb.)	13 062 kg (28,797 lb.)
Rated Operating Load, 50% Full-Turn Tipping Load, with Tire Deflection (conforms to ISO 14397-1)*	7930 kg (17,483 lb.)	7841 kg (17,286 lb.)	7893 kg (17,401 lb.)	7694 kg (16,961 lb.)	7607 kg (16,769 lb.)	7680 kg (16,931 lb.)	7613 kg (16,783 lb.)	7598 kg (16,750 lb.)	6587 kg (14,521 lb.)	6531 kg (14,398 lb.)
Operating Weight	26 800 kg (59,083 lb.)	26 884 kg (59,269 lb.)	26 809 kg (59,104 lb.)	26 937 kg (59,386 lb.)	27 069 kg (59,677 lb.)	26 960 kg (59,437 lb.)	27 001 kg (59,527 lb.)	27 024 kg (59,578 lb.)	27 267 kg (60,113 lb.)	27 352 kg (60,301 lb.)

Loader operating information is based on machine with identified linkage and standard equipment, PowerTech PSS 6135 (EPA Final Tier 4/EU Stage IV) engine, ROPS cab, rear cast bumper/counterweight, transmission side-frame guards, bottom guards, standard tires, full fuel tank, and 79-kg (175 lb.) operator. This information is affected by changes in tires, ballast, and different attachments.

*Rated operating capacity based on Deere attachments only.

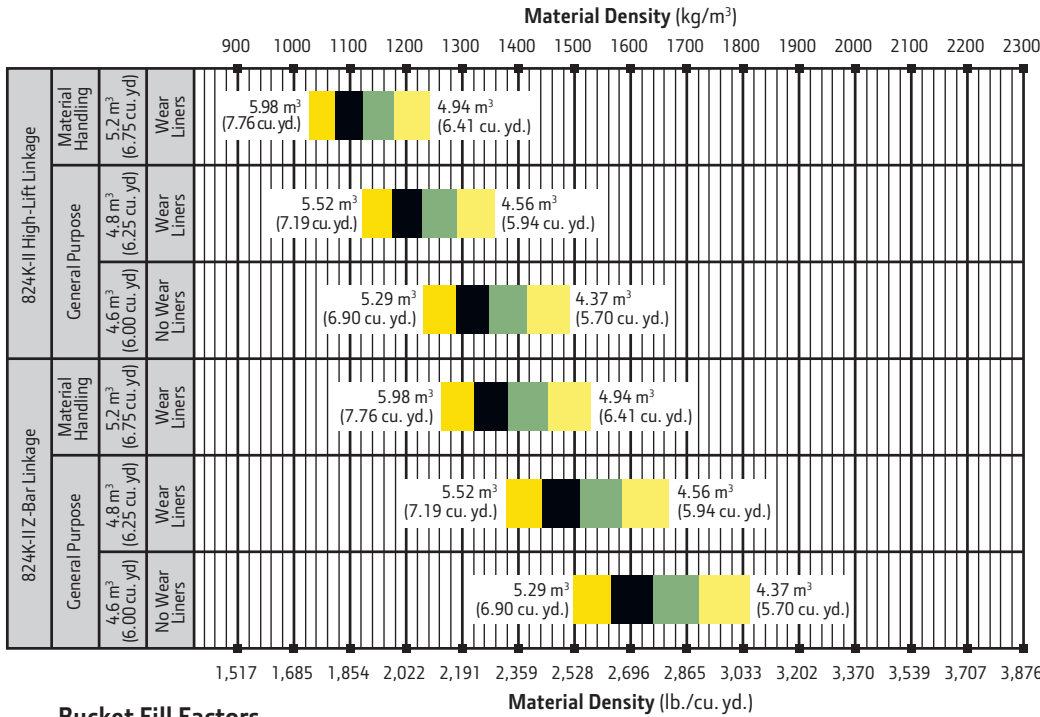
Adjustments to Operating Weights and Tipping Loads with Buckets

Adjustments to operating weights, tipping loads, and tires are based on Z-Bar machine with pin-on 4.6-m³ (6.0 cu. yd.) general-purpose bucket with bolt-on cutting edge, ROPS cab, rear cast bumper/counterweight, transmission side-frame guards, bottom guards, standard tires, full fuel tank, and 79-kg (175 lb.) operator*

Add (+) or deduct (-) kg (lb.) as indicated for loaders with 3-piece rims	Operating Weight	Tipping Load, Straight	Tipping Load, 37-deg. Partial Turn	Tipping Load, 40-deg. Full Turn	Tread Width	Width Over Tires	Vertical Height
John Deere PowerTech PSS 6135	0 kg (0 lb.)	0 kg (0 lb.)	0 kg (0 lb.)	0 kg (0 lb.)	N/A	N/A	N/A
John Deere PowerTech Plus 6135H	-134 kg (-295 lb.)	+253 kg (+558 lb.)	+194 kg (+428 lb.)	+184 kg (+406 lb.)	N/A	N/A	N/A
John Deere PowerTech 6135H	-134 kg (-295 lb.)	+253 kg (+558 lb.)	+194 kg (+428 lb.)	+184 kg (+406 lb.)	N/A	N/A	N/A
Michelin 26.5 R 25, 2 Star L-3	0 kg (0 lb.)	0 kg (0 lb.)	0 kg (0 lb.)	0 kg (0 lb.)	0 mm (0 in.)	0 mm (0 in.)	0 mm (0 in.)
Titan 26.5 R 25, 1 Star L-3	0 kg (0 lb.)	0 kg (0 lb.)	0 kg (0 lb.)	0 kg (0 lb.)	0 mm (0 in.)	-7 mm (-0.27 in.)	+4 mm (+0.16 in.)
Goodyear 26.5 R 25, 1 Star L-3	-56 kg (-123 lb.)	-40 kg (-88 lb.)	-36 kg (-79 lb.)	-35 kg (-77 lb.)	0 mm (0 in.)	+1 mm (+0.04 in.)	+4 mm (+0.16 in.)
Firestone 26.5-25, 20-Ply L-3	-360 kg (-794 lb.)	-256 kg (-565 lb.)	-230 kg (-507 lb.)	-226 kg (-498 lb.)	0 mm (0 in.)	-28 mm (-1.1 in.)	+39 mm (+1.53 in.)
Firestone 26.5-25, 20-Ply L-5 [§]	+312 kg (+688 lb.)	+222 kg (+490 lb.)	+199 kg (+440 lb.)	+196 kg (+432 lb.)	0 mm (0 in.)	-18 mm (-0.7 in.)	+63 mm (+2.48 in.)
Michelin 29.5 R 25, 2 Star L-3 [§]	+604 kg (+1,332 lb.)	+430 kg (+949 lb.)	+386 kg (+851 lb.)	+379 kg (+836 lb.)	0 mm (0 in.)	+82 mm (+3.23 in.)	+69 mm (+2.71 in.)
Titan 29.5 R 25, 1 Star L-3 [§]	+664 kg (+1,464 lb.)	+473 kg (+1,043 lb.)	+425 kg (+936 lb.)	+417 kg (+919 lb.)	0 mm (0 in.)	+58 mm (+2.3 in.)	+80 mm (+3.1 in.)
Bridgestone 29.5 R 25, 1 Star L-3 [§]	+720 kg (+1,587 lb.)	+513 kg (+1,131 lb.)	+460 kg (+1,015 lb.)	+452 kg (+996 lb.)	0 mm (0 in.)	+71 mm (+2.8 in.)	+78 mm (+3.0 in.)
4.8-m ³ (6.25 cu. yd.) General-Purpose Enhanced-Production Bucket with Wear Liners	+238 kg (+525 lb.)	-246 kg (-542 lb.)	-247 kg (-545 lb.)	-247 kg (-545 lb.)	0 mm (0 in.)	0 mm (0 in.)	0 mm (0 in.)
5.2-m ³ (6.75 cu. yd.) Material-Handling Enhanced-Production Bucket with Wear Liners	+238 kg (+525 lb.)	-246 kg (-542 lb.)	-247 kg (-545 lb.)	-247 kg (-545 lb.)	0 mm (0 in.)	0 mm (0 in.)	0 mm (0 in.)
High-Lift Boom	+338 kg (+855 lb.)	-3169 kg (-6,986 lb.)	-2859 kg (-6,303 lb.)	-2809 kg (-6,193 lb.)	0 mm (0 in.)	0 mm (0 in.)	0 mm (0 in.)

*May change based on vehicle configuration, weight, or tire-pressure adjustments.

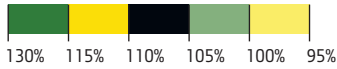
[§]Requires 8-deg. rear axle stops.



LOOSE MATERIALS kg/m³ lb./cu. yd.

Chips, pulpwood	288	486
Cinders (coal, ashes, clinkers)	673	1,134
Clay and gravel, dry	1602	2,700
Clay, compact, solid	1746	2,943
Clay, dry in lump loose	1009	1,701
Clay, excavated in water	1282	2,160
Coal, anthracite, broken, loose	865	1,458
Coal, bituminous, moderately wet	801	1,350
Earth, common loam, dry	1218	2,052
Earth, mud, packed	1843	3,105
Granite, broken	1538	2,592
Gypsum	2275	3,834
Limestone, coarse, sized	1570	2,646
Limestone, mixed sizes	1682	2,835
Limestone, pulverized or crushed	1362	2,295
Sand, damp	2083	3,510
Sand, dry	1762	2,970
Sand, voids, full of water	2083	3,510
Sandstone, quarried	1314	2,214
Shale, broken crushed	1362	2,295
Slag, furnace granulated	1955	3,294
Stone or gravel, 37.5 to 87.5-mm (1.5 to 3.5") size	1442	2,430
Stone or gravel, 18.75-mm (3/4") size	1602	2,700

Bucket Fill Factors



Additional equipment

Key: ● Standard ▲ Optional or special See your John Deere dealer for further information.

744K 824K Engine

- ● Wet-sleeve cylinder liners
- ● Programmable auto-idle and auto shutdown
- ● Selected idle adjustment from 900–1,250 rpm
- ● Starter protection
- ● Automatic engine cool-down timer†
- ● Automatic derating for exceeded system temperatures
- ● Serpentine drive belt for automatic tensioner
- ● Electrical fuel-priming pump
- ● Dual-stage fuel filter and water separator
- ● 500-hour vertical spin-on oil filter
- ● Engine-compartment light
- ▲ ▲ Chrome exhaust stack
- ▲ ▲ Automatic ether starting aid (recommended for cold starts below –12 deg. C [10 deg. F])
- ▲ ▲ Engine-block heater (recommended for cold starts below –23 deg. C [–10 deg. F])
- ▲ ● Centrifugal engine air pre-cleaner

Powertrain

- ● 3-position clutch cutoff
- ● Programmable maximum high gear
- ● Clutch calibration engaged from monitor
- ● 2,000-hour vertical spin-on transmission filter
- ● Transmission diagnostic ports
- ● 5-speed transmission with lockup torque converter
- ▲ ▲ 4-speed transmission with non-lockup torque converter
- ● Front locking differential
- ▲ ▲ Rear locking differential
- ▲ ▲ Automatic differential lock
- ● Axle oil temperature sensing
- ● Wheel-spin control

Quad-Cool™ Cooling System

- ● Heavy-duty, trash-resistant radiator and high-ambient cooling package
- ● 2-side access to all coolers
- ● Isolated from engine compartment
- ● Integral engine oil cooler
- ● Hydraulic oil cooler (oil to air)
- ● Transmission oil cooler (oil to air)
- ● Charge air cooler (air to air)
- ● Coolant recovery tank
- ● Antifreeze, –37 deg. C (–34 deg. F)
- ● Cool-on-demand swing-out fan
- ● Enclosed fan safety guard
- ▲ ▲ Automatic reversing fan drive

744K 824K Quad-Cool Cooling System (continued)

- ● Axle and service-brake coolers
- ▲ ▲ Corrosive-environment coolers

Hydraulics

- ● Automatic return-to-dig bucket positioner
- ● In-cab adjustable automatic boom-height kickout/return to carry
- ● Reservoir with sight gauge and fill strainer
- ● Hydraulic diagnostic ports
- ● 4,000-hour in-tank filter
- ▲ ▲ 2 function — joystick with F-N-R
- ▲ ▲ 2 function — joystick with steering column F-N-R
- ● 2 function — 2-lever fingertip controls and steering column F-N-R
- ▲ ▲ 3 function — joystick with F-N-R and 3rd-function auxiliary lever
- ▲ ▲ 3 function — joystick with steering column F-N-R and 3rd-function auxiliary lever
- ▲ ▲ 3 function — 3-lever fingertip controls and steering column F-N-R
- ● Ride control, automatic with monitor-adjustable speed settings
- ▲ ▲ Hydraulic control system for quick-coupler locking pins

Steering Systems

- ● Conventional steering wheel with spinner knob
- ▲ ▲ Joystick steering (including conventional steering column) with gearshift, F-N-R, and horn
- ▲ ▲ Secondary steering

Electrical

- ● Solid-state electrical power-distribution system
- ● Lockable master electrical-disconnect switch
- ● By-pass start safety cover at starter
- ● Remote jump-start access in battery box†
- ● Pre-wired for beacon/strobe light
- ● Lights: Halogen driving lights with guards (2) / Front (4), rear cab (2), and rear grille (2) work lights / Incandescent front turn signals and flashers / LED stop- and taillights
- ▲ ▲ Heavy-duty front LED turn signal and marker lights
- ▲ ▲ Premium LED work, drive, and marker lights
- ● Programmable courtesy lights
- ● Horn, electric
- ● Reverse warning alarm
- ● Multi-function/multi-language LCD color monitor includes: Digital instruments — Analog display (hydraulic oil temperature, engine coolant temperature, transmission oil temperature, and engine oil pressure) / Digital display (engine rpm, transmission gear/direction indicator, hour meter, fuel level, speedometer, odometer, average fuel consumption, and outside temperature)
- ● Integrated cycle counter with 5 categories
- ● Indicator lights: Standard and selected options / Amber caution and red stop

†Available only with EPA Final Tier 4/EU Stage IV engines.

Net engine power is with standard equipment including air cleaner, exhaust system, alternator, and cooling fan at test conditions per ISO 9249. No derating is required up to 3050-m (10,000 ft.) altitude. Specifications and design subject to change without notice. Specifications with the exception of bucket capacity are in accordance with all applicable ISO standards. Except where otherwise noted, these specifications are based on units with applicable linkage and standard equipment, ROPS cab, rear cast bumper/counterweight, transmission side-frame guards, bottom guards, standard tires, full fuel tank, and 79-kg (175 lb.) operator.

Additional equipment *(continued)*

Key: ● Standard ▲ Optional or special See your John Deere dealer for further information.

744K 824K Electrical *(continued)*

- ● Operator-warning messages
- ● Built-in diagnostics: Diagnostic-code details / Sensor values / Calibrations / Individual circuit tester
- ▲ ▲ Electrical corrosion-prevention package
- ▲ ▲ AM/FM/Weather Band (WB) radio with remote auxiliary port
- ▲ ▲ Premium AM/FM/WB/XM Satellite Radio™ ready radio with Bluetooth®, remote auxiliary port, and remote USB port
- ● 24- to 12-volt, 8-amp converter
- ▲ ▲ 24- to 12-volt, 15- or 30-amp converter and power port

Operator's Station

- ● Quiet Cab with air conditioning/heater (ROPS/FOPS Level 1, isolation mounted)
- ● Keyless start with multiple security modes
- ● Sealed-switch module with function indicators
- ● Seat with backrest extension, deep foam, fabric cover, and adjustable air suspension
- ▲ ▲ Premium seat with high-wide back and headrest extension, heated, leather/fabric cover, and adjustable air suspension
- ● Hydraulic controls integrated to seat
- ● High-visibility, bright-orange seat belt, 76 mm (3 in.), with retractor
- ● Cup holders (2)
- ● Lunch-box/cooler holder
- ● Dome and reading light
- ● 12-volt power port
- ● Rubber floor mat
- ● Tilt steering column
- ● Operator's manual storage compartment
- ● Outside (2) and inside (2) rearview mirrors
- ▲ ▲ Large heated outside mirrors
- ● Left-side operator-station access
- ● Slip-resistant steps and ergonomic handholds
- ● Sun visor
- ● Radio ready
- ● Front and rear intermittent windshield wiper and washers
- ▲ ▲ Powered cab air pre-cleaner
- ▲ ▲ Beacon bracket (single or dual available)
- ▲ ▲ Rear camera
- ▲ ▲ Rear camera and radar object-detection system
- ● LOADRITE® L2180 Payload Scale ready
- ▲ ▲ LOADRITE L2180 Payload Scale
- ▲ ▲ LOADRITE L2180 Payload Scale with printer
- ▲ ▲ Fire extinguisher

Loader Linkage

- ● Z-Bar loader linkage
- ▲ ▲ High-Lift Z-Bar loader linkage

744K 824K Buckets and Attachments

- ▲ ▲ Full line of Deere pin-on buckets
- ▲ ▲ Bolt-on bucket spill guard
- ▲ ▲ Bushed pin joints (including static joints) on optional Enhanced-Production buckets

Overall Vehicle

- ● JDLink™ Ultimate wireless communication system (available in specific countries; see your dealer for details)
- ● NeverGrease™ rear-axle oscillation
- ● NeverGrease steering-cylinder joints
- ● Front and rear tie-downs
- ● Rear cast bumper with rear hitch and locking pin
- ● Articulation locking bar
- ● Loader boom service locking bar
- ● 40-deg. steering articulation to each side with rubber-cushion stops on frame
- ● Vandal protection with lockable engine enclosures, right counterweight storage, battery box, and filler access for radiator/fuel/hydraulic transmission
- ● Right and left handrails, platforms, and steps
- ● Service steps and handholds
- ● Storage compartment
- ● Fuel-tank fill strainer
- ● Heavy-duty fuel-tank guard
- ● Ground-level fueling and DEF[†]
- ● Same-side ground-level daily servicing
- ● Environmental drains for engine, transmission, hydraulic oils, and engine coolant
- ● Fluid-sampling ports for engine, transmission, hydraulic and axle oils, and engine coolant
- ● 26.5R25 tires on 5-piece rims
- ▲ ▲ 29.5R25 tires on 5-piece rims
- ▲ ▲ Waste handler (Z-Bar and High-Lift)
- ● Level 1 sound package
- ▲ ▲ Level 2 sound package
- ▲ ▲ Transmission side-frame and bottom guards
- ▲ ▲ Fast-fuel system
- ▲ ▲ Quick fluid service (engine, transmission, hydraulic oils, and engine coolant)
- ▲ ▲ Fenders, full-coverage, front
- ▲ ▲ Fenders, full-coverage, front and rear
- ▲ ▲ Less wheels and tires with axle stops
- ▲ ▲ Rims less tires
- ● Lift eyes
- ▲ ▲ License-plate bracket and light
- ▲ ▲ Special guarding for waste and forestry applications

[†]Available only with EPA Final Tier 4/EU Stage IV engines.

Net engine power is with standard equipment including air cleaner, exhaust system, alternator, and cooling fan at test conditions per ISO 9249. No derating is required up to 3050-m (10,000 ft.) altitude. Specifications and design subject to change without notice. Specifications with the exception of bucket capacity are in accordance with all applicable ISO standards. Except where otherwise noted, these specifications are based on units with applicable linkage and standard equipment, ROPS cab, rear cast bumper/counterweight, transmission side-frame guards, bottom guards, standard tires, full fuel tank, and 79-kg (175 lb.) operator.



JOHN DEERE

