

ENGINE

John Deere engineered and manufactured 4-cylinder diesel engine. Replaceable wet-type cylinder liners help ensure superior heat dissipation, longer engine life. High-strength alloy heads include replaceable valve seat inserts. Plasma coated piston rings are also included. High engine torque rise helps provide fast engine recovery when working in tough operating conditions.

Engine: John Deere 4039D

Rated power at 2100 rpm 60 SAE net hp (45 kW)
 63 SAE gross hp (47 kW)

Cylinders 4

Displacement 239 cu. in. (3,917 L)

Fuel consumption, typical 1.3 to 2.0 gal/hr (4.9 to 7.6 L/h)

Maximum net torque at 1300 rpm 188 lb-ft (255 Nm)

Lubrication pressure system with full-flow filter and oil cooler

Air cleaner dual stage, dry type with safety element,
 precleaner and restriction indicator

Electrical system 12 volt with 65 amp alternator

Cooling fan blower

TRANSMISSION

The Hi-Lo-Reverse transmission is designed and built by John Deere. You can shift between high, low or reverse in each of four gear ranges without slowing or stopping. Because the transmission is direct drive, a high percentage of power is delivered to the tracks.

TRAVEL SPEEDS

Gear	mph	(km/h)	Gear	mph	(km/h)
1	Low	1.2	3	Low	2.8
	High	1.7		High	4.0
	Reverse	1.6		Reverse	3.8
2	Low	1.9	4	Low	4.4
	High	2.6		High	6.2
	Reverse	2.5		Reverse	5.9

FINAL DRIVES

Large heavy-duty final drive assemblies help ensure long service life. To keep final drives from being adversely affected by shock loads, they are isolated from the track frame.

STEERING/BRAKES

Self-adjusting and oil-cooled systems last up to three times longer than dry-type systems. They help reduce maintenance costs by virtually eliminating frequent adjustments and expensive repairs.

HYDRAULICS

Control T-bar, 3 function
 Pressure 2750 psi (18 961 kPa)
 Pump gear
 Flow 11 gpm (46.5 L/min)

TRACKS

John Deere Dura-Trax™ undercarriage features large deep-heat-treated components for exceptional wear. Pins and bushings are sealed for life. Rollers and idlers are sealed and permanently lubricated. A long-track option has a 6-roller frame and 77.9 in. (1979 mm) length of track on the ground.

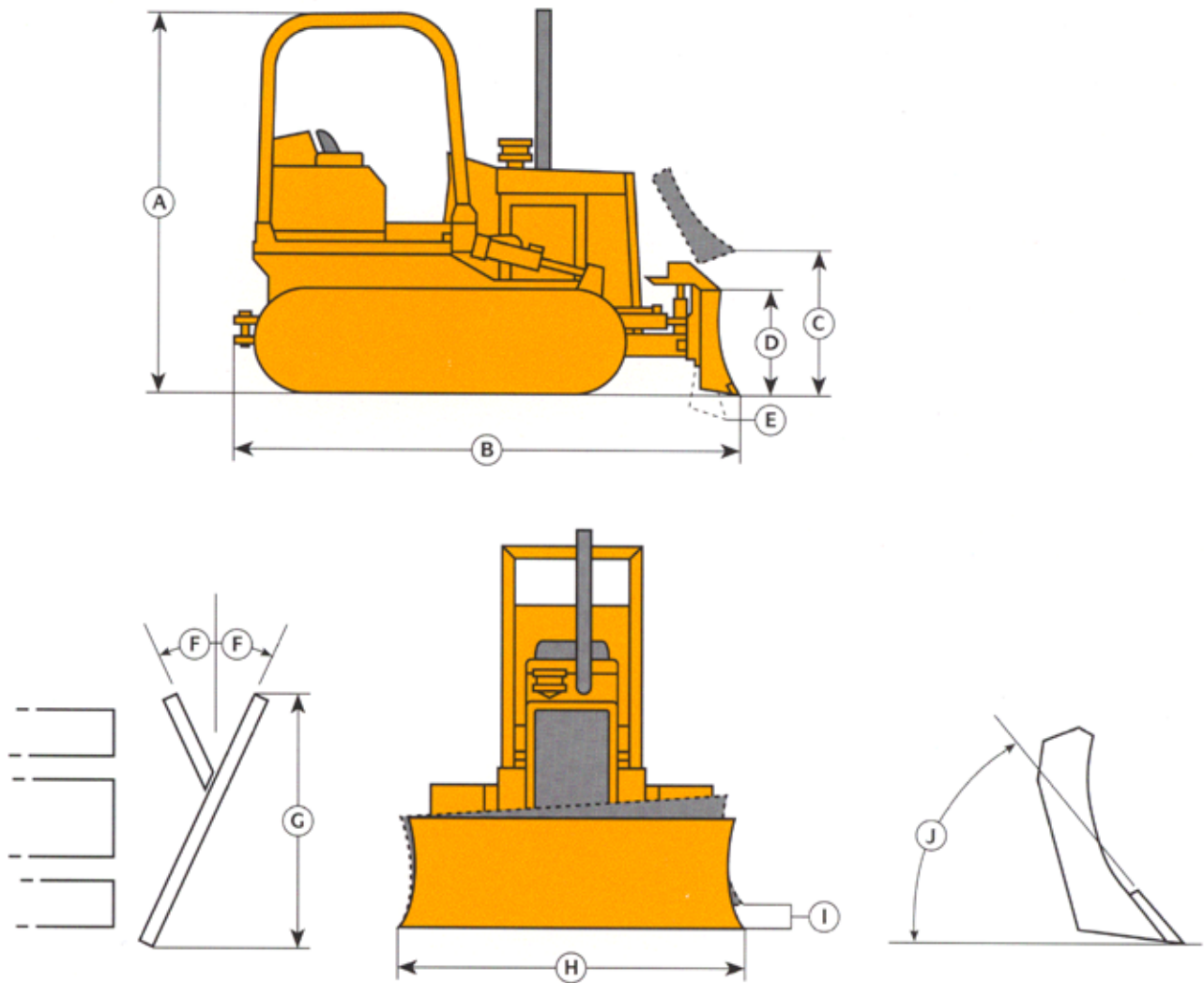
CAPACITIES

Fuel tank 31 gal. (117.3 L)
 Cooling system 3.25 gal. (12.3 L)
 Crankcase, including filter 8.5 qt. (8.0 L)
 Transmission, steering clutch
 housings and final drive 14 gal. (53 L)
 Hydraulic reservoir 6.0 gal. (22.7 L)
 Hydraulic system 8.5 gal. (32.2 L)

OPERATING WEIGHT

400G (with ROPS) **SAE**
 Standard track 11,820 lb. (5362 kg)
 Long track 12,200 lb. (5534 kg)

DIMENSIONS



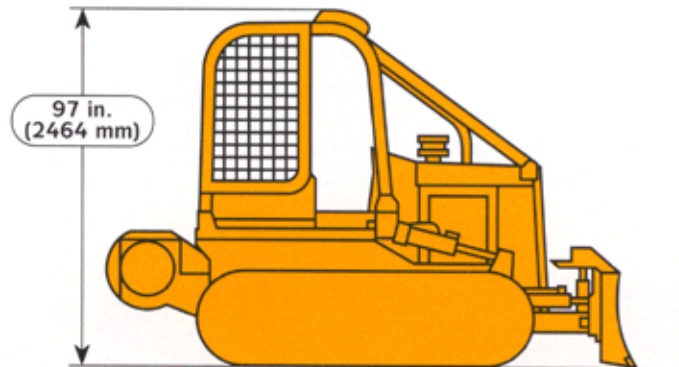
A Overall height.....		98 in. (2489 mm)
B Overall length.....		143 in. (3632 mm)
C Blade lift height.....		31.4 in. (796 mm)
D Blade height.....		28.6 in. (727 mm)
E Digging depth.....		20.6 in. (522 mm)
F Blade angle.....		25 degrees
G Blade width at full angle.....		83 in. (2108 mm)
H Blade width.....		90 in. (2286 mm)
I Blade tilt.....		10.43 in. (265 mm)
J Blade pitch angle.....		50 degrees
Blade capacity, SAE.....	1.05 yd. ³ (0.80 m ³).....	84 in. (2134 mm)
SAE.....	1.13 yd. ³ (0.86 m ³).....	90 in. (2286 mm)

UNDERCARRIAGE

	Standard Track	Long Track (Optional)
Grouser, closed center	14 in. (356 mm)	14 in. (356 mm)
Track shoes, each side	36	39
Ground contact area	1940 sq. in. (12 516 cm ²)	2180 sq. in. (14 064 cm ²)
Ground pressure	6.1 psi (42 kPa)	5.6 psi (38.6 kPa)
Length of track on ground	69.3 in. (1760 mm)	77.9 in. (1979 mm)
Track gauge	50 in. (1270 mm)	50 in. (1270 mm)
Carrier roller	1	1
No. of track rollers	5	6
Adjustment	hydraulic	hydraulic
Ground clearance	11.6 in. (294 mm)	11.6 in. (294 mm)

FORESTRY APPLICATION

The 400G Crawler can be equipped for forestry applications with the addition of limb risers and screens for the rollover protective structure. A John Deere-built winch adds versatility for skidding and clearing operations.



Limb risers and brush-protection assembly for roll-over protective structure

DRAWBAR PULL

(with adequate weight and traction at maximum engine torque)

Gear:	lb.	(kN)	(kg)
Range 1			
L	12,900	57.3	5840
H	11,500	51.5	5250
Range 2			
L	10,300	45.9	4680
H	8,200	36.7	3742
Range 3			
L	7,600	34.2	3487
H	5,000	22.3	2273
Range 4			
L	4,600	20.6	2100
H	3,000	13.3	1356