

410 P

Backhoe Loader



JOHN DEERE





READY TO RUN IN THE REAL WORLD

When owners and operators just like you — the people who know what customers need for their operations to succeed — weighed in on our latest backhoe loaders, we heeded the real-world feedback. You asked for one machine that capably completes the work of two. A powerful overachiever with outstanding loader performance, backhoe capability, and multifunction versatility. And packed with productivity-elevating options to match the application. Meet the 410 P-Tier Backhoe Loader, a standout multitasker ready to run — and get more done — in any corner of the working world.

410 P-TIER BACKHOE LOADER

FEATURES

Powerful engine technology

Rugged EPA Final Tier 4 (FT4)/EU Stage IV John Deere PowerTech™ EWL engine boosts power, torque, and reliability compared to previous models. Simple two-valve cylinder-head, wet-sleeve design with replaceable cylinder liners provides uniform cooling and aids in reducing oil breakdown and ring wear. Filters have been redesigned and relocated for easier servicing over earlier models.

Elevated experience

Pressure-compensated, load-sensing (PCLS) hydraulics provide excellent multi-functioning, smooth machine control, and up to 15-percent greater craning capacity with Lift Mode, collectively providing a distinctive operator experience and unmatched machine performance. Trenching operation can be conducted at a lower engine rpm, reducing fuel consumption and jobsite noise.

Forward thinking

When enabled on the sealed-switch module, AutoShift automatically shifts the PowerShift™ transmission to the appropriate gear. Simply set the control lever to the highest gear desired, and the transmission will optimally shift based on engine rpm and ground speed. Included in the base machine configuration, AutoShift enhances operator ease of use during extended transport or load-and-carry applications.

Always on the move

Limited-slip mechanical-front-wheel drive (MFWD) delivers sure-footed traction in any ground condition. Engage momentary MFWD "on the fly" with a touch of a button on the loader control.

Bright idea

Optional LED lighting brings things into focus when your workday goes long. For enhanced trenching visibility, the boom-light kit includes two LED floodlights mounted to each side of the boom.



UP TO
15% MORE
CRANING CAPACITY
WITH LIFT MODE

Control the ride and the load

Auto ride control eliminates the need to manually turn the feature on and off during load-and-carry applications, enhancing the operator's ease of use. When activated, front loader cylinders function as a shock absorber, smoothing the ride over rough terrain and reducing material spillage. On/Off functionality is controlled by ground speed and can be adjusted by the operator in the cab's display monitor.

Save fuel with economy mode

Standard economy mode can be configured separately between loader and backhoe functions. Activate economy mode for backhoe functions while retaining full power for loader functions. This helps maximize fuel usage in lighter-work applications with minimal effect on machine performance.

It all looks good from here

Spacious operator station is loaded with creature comforts including an efficient HVAC system, choice of adjustable mechanical or air-suspension seat, and optional premium radio with Bluetooth® and auxiliary input. Sightlines to the loader bucket corners over the sloped hood are clear.

Take it easy

Enhanced "palm-on-top" loader-control grip is intuitive and easy to use. Redesigned loader-lever linkage reduces resistance and improves its throw and feel, decreasing lever travel by up to 15 percent.

Nice and precise

Standard precision mode reduces the speed of hydraulic backhoe functions without sacrificing lift performance, for close work around underground utilities or jobsite obstacles, or when lifting — also useful for less experienced operators.



410 P-TIER BACKHOE LOADER



AUTO RIDE CONTROL
IMPROVES THE RIDE &
MATERIAL RETENTION



Hit the ground running

Same-side ground-level service points speed daily checks and fills. Other commonsense features such as quick-change filters, extended service intervals, simple-to-read sight gauges, and easy-access grease zerks help increase uptime.

Precision Construction

From grade management and obstacle detection to product automation features and jobsite intelligence, this suite of construction technology delivers productivity solutions to help you get more done, more efficiently.

John Deere construction equipment comes with in-base connectivity — free from subscriptions or annual renewals. Analyze critical machine data, track utilization, review diagnostic alerts, and more from **the John Deere Operations Center™**. The Operations Center also enables **John Deere Connected Support™**, which uses data from thousands of connected machines to proactively address issues before they arise. Your dealer can also remotely monitor machine health, diagnose problems, and even update machine software without a trip to the jobsite.*

*Availability varies by region and product. Options not available in every country.

410 P-TIER BACKHOE LOADER SPECIFICATIONS

While general information, pictures, and descriptions are provided, some illustrations and text may include product options and accessories NOT AVAILABLE in all regions, and in some countries products and accessories may require modifications or additions to ensure compliance with the local regulations of those countries.

Engine		410 P-TIER		
Manufacturer and Model	John Deere PowerTech™ EWL 4.5L turbocharged	John Deere PowerTech™ 4.5L turbocharged		
Non-Road Emission Standard	EPA Final Tier 4/EU Stage IV	EPA Tier 2/EU Stage II		
Displacement	4.5 L (276 cu. in.)	4.5 L (276 cu. in.)		
Gross Peak Power	88 kW (118 hp) at 1,900 rpm	76 kW (102 hp) at 2,100 rpm		
Net Peak Power (ISO 9249)	87 kW (116 hp) at 1,900 rpm	75 kW (101 hp) at 2,100 rpm		
Net Peak Torque (ISO 9249)	459 Nm (339 lb.-ft.) at 1,600 rpm	387 Nm (285 lb.-ft.) at 1,500 rpm		
Net Torque Rise	26%	23%		
Lubrication	Pressure system with spin-on filter and cooler	Pressure system with spin-on filter and cooler		
Air Cleaner	Dual-stage dry type with safety element and evacuator valve	Dual-stage dry type with safety element and evacuator valve		
Cooling				
Fan Type	Electronically controlled, variable-rate, suction-type cooling fan standard	Variable-rate, temperature-controlled (viscous) cooling fan standard		
Engine Coolant Rating	-40 deg. C (-40 deg. F)	-40 deg. C (-40 deg. F)		
Engine Oil Cooler	Oil to water	Oil to water		
Powertrain				
Transmission	5-speed, helical-cut gears, full PowerShift™ transmission with hydraulic reverser standard; electric clutch cutoff on loader lever; AutoShift transmission standard			
Torque Converter	Single stage, dual phase with 2.63:1 stall ratio, 280 mm (11 in.)			
PowerShift Standard Transmission				
Maximum Travel Speeds With Standard Engine,				
With 21L-24 Rear Tires	<i>Forward</i>	<i>Reverse</i>	<i>Forward</i>	<i>Reverse</i>
Gear 1	5.6 km/h (3.5 mph)	7.0 km/h (4.3 mph)	5.4 km/h (3.4 mph)	6.9 km/h (4.6 mph)
Gear 2	10.2 km/h (6.3 mph)	12.9 km/h (8.0 mph)	10.0 km/h (6.2 mph)	12.6 km/h (8.4 mph)
Gear 3	21.1 km/h (13.1 mph)	20.8 km/h (12.9 mph)	20.6 km/h (12.8 mph)	20.3 km/h (13.6 mph)
Gear 4	38.3 km/h (23.8 mph)	—	37.5 km/h (23.3 mph)	—
Gear 5	40.0 km/h (24.9 mph)	—	40.0 km/h (24.9 mph)	—
Axles				
Axle Oscillation, Stop to Stop, Front Axle	22 deg.		22 deg.	
Axle Ratings	<i>Front</i>	<i>Rear</i>	<i>Front</i>	
SAE J43	6500 kg (14,300 lb.)	7500 kg (16,500 lb.)	6500 kg (14,300 lb.)	
Dynamic	9000 kg (19,800 lb.)	10 000 kg (22,000 lb.)	9000 kg (19,800 lb.)	
Static	26 500 kg (58,400 lb.)	26 500 kg (58,400 lb.)	26 500 kg (58,400 lb.)	
Ultimate	43 500 kg (95,900 lb.)	43 500 kg (95,900 lb.)	43 500 kg (95,900 lb.)	
Differentials				
Mechanical-Front-Wheel-Drive (MFWD) Axle	Automatic, limited-slip traction control			
Rear Axle	Foot actuated, hydraulically engaged 100% mechanical lock			
Steering (ISO 5010)				
Axle	<i>MFWD</i>	<i>Non-Powered Front</i>		
Curb-Turning Radius				
With Brakes	3.53 m (11 ft. 7 in.)	3.45 m (11 ft. 4 in.)		
Without Brakes	4.02 m (13 ft. 2 in.)	3.90 m (12 ft. 10 in.)		
Bucket-Clearance Circle				
With Brakes	10.20 m (33 ft. 6 in.)	10.13 m (33 ft. 3 in.)		
Without Brakes	10.93 m (35 ft. 10 in.)	10.80 m (35 ft. 5 in.)		
Steering Wheel Turns (lock to lock, flow amplified)	2.6 to 3.6	3.1 to 4.3		
MFWD Axle	Heavy duty, outboard planetary final drives distribute shock loads over 3 gears			
Rear Axle	Heavy duty, outboard planetary final drives distribute shock loads over 4 gears			
Brakes (ISO 3450)				
Service	Power assisted, hydraulic wet disc, mounted inboard, self-adjusting and self-equalizing			
Parking	Spring applied, hydraulically released, wet, multi-disc, independent of service brakes with electric switch control			
Hydraulics				
Main Pump	Pressure compensated load sensing (PCLS), axial-piston pump			
Pump Flow at 2,200 rpm, Backhoe and Loader	163 L/m (43 gpm)			
System Relief Pressure				
Backhoe	24 993 kPa (3,625 psi)			
Lift Mode (EPA FT4/EU Stage IV only)	27 579 kPa (4,000 psi)			
Loader	24 993 kPa (3,625 psi)			

410 P-TIER BACKHOE LOADER SPECIFICATIONS

410

P

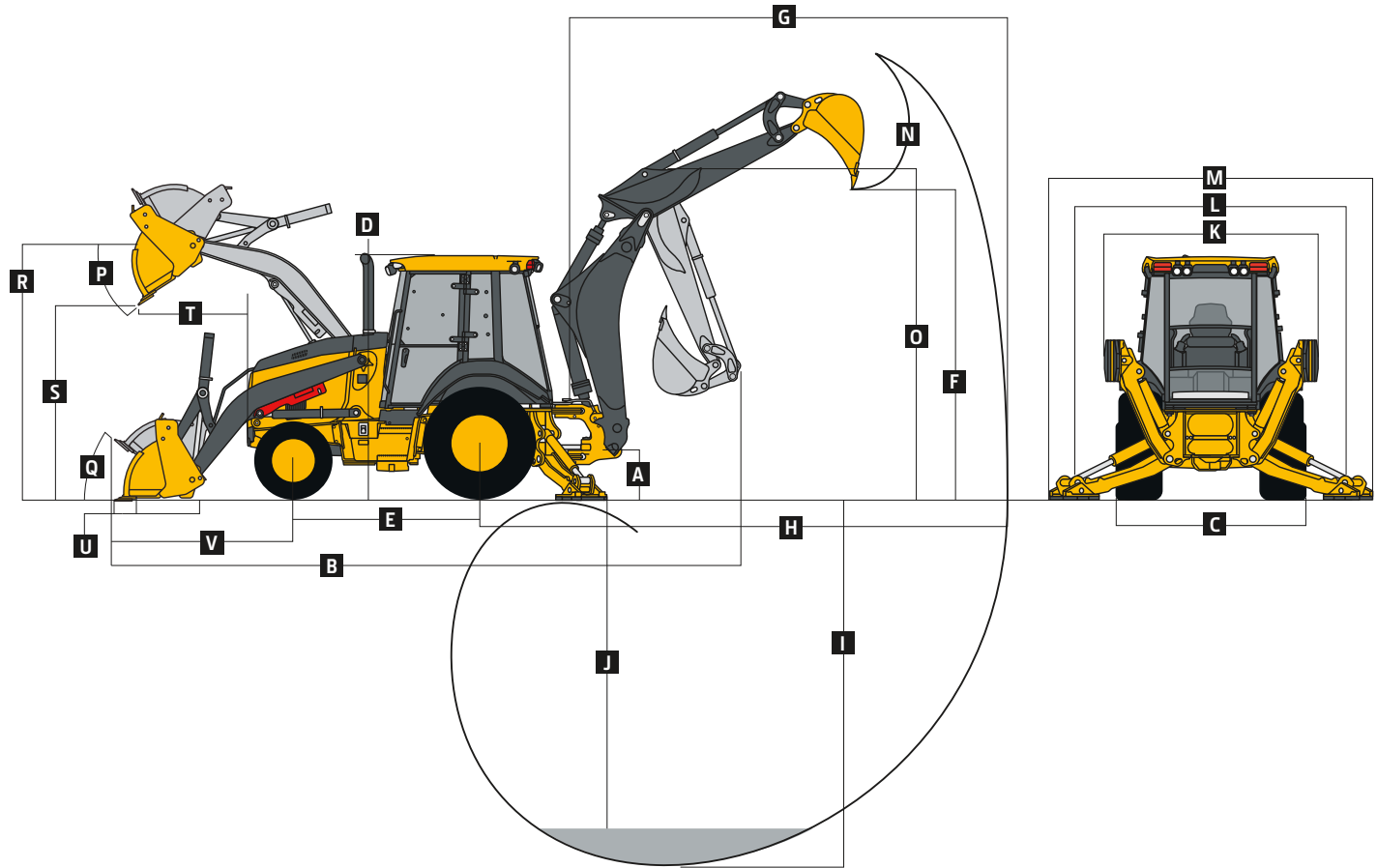
While general information, pictures, and descriptions are provided, some illustrations and text may include product options and accessories NOT AVAILABLE in all regions, and in some countries products and accessories may require modifications or additions to ensure compliance with the local regulations of those countries.

Hydraulics <i>(continued)</i>		410 P-TIER	
Controls			
Backhoe	Pilot controls with pattern select standard; electrohydraulic (EH) auxiliary functions optional		
Loader	Single-lever control with electric clutch cutoff switch and MFWD (momentary) standard; single-lever control with electric clutch cutoff switch, EH proportional auxiliary roller, MFWD (momentary), and transmission quick-shift optional		
Cylinders			
Heat-treated, chrome-plated, polished rods; hardened steel (replaceable bushings) pivot pins			
	<i>Bore</i>	<i>Rod Diameter</i>	<i>Stroke</i>
Loader Boom (2)	80 mm (3.15 in.)	50 mm (1.97 in.)	790 mm (31.10 in.)
Loader Bucket (1)	90 mm (3.54 in.)	50 mm (1.97 in.)	744 mm (29.29 in.)
Backhoe Boom (1)	140 mm (5.51 in.)	70 mm (2.76 in.)	897 mm (35.31 in.)
Backhoe Crowd (1)	120 mm (4.72 in.)	63 mm (2.48 in.)	727 mm (28.62 in.)
Backhoe Bucket (1)	100 mm (3.94 in.)	63 mm (2.48 in.)	810 mm (31.89 in.)
Backhoe Swing (2)	90 mm (3.54 in.)	50 mm (1.97 in.)	278 mm (10.94 in.)
Backhoe Extendable Dipperstick (1)	80 mm (3.15 in.)	45 mm (1.77 in.)	1214 mm (47.78 in.)
Backhoe Stabilizer, Extended (2)	100 mm (3.94 in.)	50 mm (1.97 in.)	500 mm (19.69 in.)
Non-Powered Axle (1)	70 mm (2.76 in.)	42 mm (1.65 in.)	210 mm (8.27 in.)
MFWD (1)	65 mm (2.56 in.)	40 mm (1.57 in.)	210 mm (8.27 in.)
Electrical			
	<i>EPA FT4/EU Stage IV</i>	<i>EPA Tier 2/EU Stage II</i>	
Voltage	12 volt	12 volt	
Alternator Rating	145 amp	130 amp	
Lights	10 halogen: 4 front, 4 rear, and 2 side docking (32,500 candlepower each); turn signals and flashers: 2 front and 2 rear; stop and taillights; and 2 rear reflectors; factory-installed option for 2 LED spotlights and 8 LED floodlights in lieu of standard halogen light package		
Operator Station			
Type (ISO 3471)	Fully enclosed cab, isolation mounted, ROPS/FOPS, left/right access, with molded roof; optional canopy		
Tires/Wheels			
	<i>Front</i>	<i>Rear</i>	
Non-Powered Front Axle	12.5/80-18 F3 (12)	21L-24 R4 (12)	
	14.5/75-16.1 F3 (16)	21L-24 R4 (12)	
With MFWD	12.5/80-18 R4 (10)	21L-24 R4 (12)	
	12.5/80-18 I3 (12)	21L-24 R4 (12)	
	340/80R18 XMCL	500/70R24 XMCL	
	340/80R18 550	500/70R24 550	
	340/80R18 580	500/70R24 580	
Serviceability			
Refill Capacities		Refill Capacities <i>(continued)</i>	
Cooling System		Diesel Exhaust Fluid (DEF) Tank (EPA FT4/EU Stage IV only)	13.7 L (3.6 gal.)
Cab	27.5 L (29.1 qt.)	Hydraulic System	126.8 L (33.5 gal.)
Canopy	25.7 L (27.2 qt.)	Hydraulic Reservoir	45.0 L (11.9 gal.)
Rear Axle	18.0 L (19.0 qt.)	MFWD Axle	
Engine Oil (including vertical spin-on filter)	13.0 L (13.7 qt.)	Differential Housing	6.5 L (6.9 qt.)
Torque Converter and Transmission	15.1 L (16.0 qt.)	Planetary (each)	0.9 L (1.0 qt.)
Fuel Tank (with ground-level fueling)	128.7 L (34.0 gal.)		
Operating Weights			
	<i>EPA Final Tier 4 (FT4)/EU Stage IV</i>	<i>EPA Tier 2/EU Stage II</i>	
With Full Fuel Tank, 75-kg (165 lb.) Operator, Standard Equipment, Canopy, and 340-kg (750 lb.) Counterweight	7975 kg (17,582 lb.)	7929 kg (17,480 lb.)	
Typical With Cab, Extendable Dipperstick, and 567-kg (1,250 lb.) Counterweight	8735 kg (19,257 lb.)	8689 kg (19,156 lb.)	
Optional Components (weight difference between base equipment and option)			
Cab	279 kg (615 lb.)	279 kg (615 lb.)	
MFWD With Tires	137 kg (302 lb.)	137 kg (302 lb.)	
Extendable Dipperstick	254 kg (560 lb.)	254 kg (560 lb.)	
Front Loader Coupler	142 kg (313 lb.)	142 kg (313 lb.)	
Backhoe Bucket Coupler	120 kg (265 lb.)	120 kg (265 lb.)	

410 P-TIER

While general information, pictures, and descriptions are provided, some illustrations and text may include product options and accessories NOT AVAILABLE in all regions, and in some countries products and accessories may require modifications or additions to ensure compliance with the local regulations of those countries.

Overall Dimensions		410 P-TIER	
A	Ground Clearance, Minimum	334 mm (13 in.)	
B	Overall Length, Transport	7.43 m (24 ft. 5 in.)	
C	Width Over Tires	2.34 m (7 ft. 8 in.)	
D	Height to Top of ROPS/Cab	2.87 m (9 ft. 5 in.)	
E	Length From Axle to Axle		
	Non-Powered Front Axle	2.16 m (7 ft. 1 in.)	
	MFWD Axle	2.19 m (7 ft. 2 in.)	



Backhoe Dimensions and Performance

Backhoe specifications are with 610-mm x 0.21-m³ (24 in. x 7.5 cu. ft.) bucket; dipper lift specs are with a boom angle of 60 deg.

Bucket Range	305–610 mm (12–24 in.)	Digging Force (continued)	
Digging Force		Crowd Cylinder (continued)	
Bucket Cylinder	69.9 kN (15,723 lb.)	Lift Mode (EPA FT4/EU Stage IV only)	48.6 kN (10,932 lb.)
Lift Mode (EPA FT4/EU Stage IV only)	77.2 kN (17,350 lb.)	IV only	
Crowd Cylinder	44.1 kN (9,907 lb.)	Swing Arc	180 deg.
		Operator Control	2 levers

	With Standard Backhoe	Retracted	Extended
F Loading Height, Truck Loading Position	3.97 m (13 ft. 0 in.)	4.01 m (13 ft. 2 in.)	4.72 m (15 ft. 6 in.)
G Reach from Center of Swing Pivot	6.02 m (19 ft. 9 in.)	6.02 m (19 ft. 9 in.)	7.14 m (23 ft. 5 in.)
H Reach from Center of Rear Axle	7.14 m (23 ft. 5 in.)	7.14 m (23 ft. 5 in.)	8.26 m (27 ft. 1 in.)
I Digging Depth (SAE maximum)	4.85 m (15 ft. 11 in.)	4.85 m (15 ft. 11 in.)	6.00 m (19 ft. 8 in.)
J Digging Depth (SAE)			
610-mm (2 ft.) Flat Bottom	4.80 m (15 ft. 9 in.)	4.80 m (15 ft. 9 in.)	5.97 m (19 ft. 7 in.)
2440-mm (8 ft.) Flat Bottom	4.49 m (14 ft. 9 in.)	4.49 m (14 ft. 9 in.)	5.75 m (18 ft. 10 in.)
K Stabilizer Width, Transport	2.35 m (7 ft. 9 in.)	2.35 m (7 ft. 9 in.)	2.35 m (7 ft. 9 in.)
L Stabilizer Spread, Operating	3.45 m (11 ft. 4 in.)	3.45 m (11 ft. 4 in.)	3.45 m (11 ft. 4 in.)
M Stabilizer Overall Width, Operating	4.03 m (13 ft. 3 in.)	4.03 m (13 ft. 3 in.)	4.03 m (13 ft. 3 in.)
N Bucket Rotation	190 deg.	190 deg.	190 deg.
O Transport Height	3.91 m (12 ft. 10 in.)	3.91 m (12 ft. 10 in.)	3.91 m (12 ft. 10 in.)

Loader Dimensions and Performance

P Bucket Dump Angle, Maximum	45 deg.
Q Rollback Angle at Ground Level	40 deg.

While general information, pictures, and descriptions are provided, some illustrations and text may include product options and accessories NOT AVAILABLE in all regions, and in some countries products and accessories may require modifications or additions to ensure compliance with the local regulations of those countries.

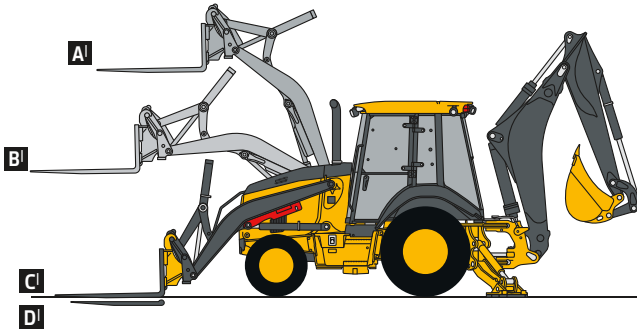
410 P-TIER

Loader Dimensions and Performance (continued) 410 P-TIER

	Heavy-duty	Heavy-duty	Multipurpose
Bucket Capacity	1.00 m ³ (1.31 cu. yd.)	1.15 m ³ (1.50 cu. yd.)	1.00 m ³ (1.31 cu. yd.)
Width	2346 mm (92 in.)	2394 mm (94 in.)	2346 mm (92 in.)
Weight	521 kg (1,148 lb.)	548 kg (1,208 lb.)	863 kg (1,902 lb.)
Breakout Force	47.3 kN (10,645 lb.)	46.1 kN (10,361 lb.)	43.7 kN (9,824 lb.)
Lift Capacity, Full Height	3271 kg (7,211 lb.)	3160 kg (6,967 lb.)	2787 kg (6,144 lb.)
R Height to Bucket Hinge Pin, Maximum	3.47 m (11 ft. 4 in.)	3.47 m (11 ft. 4 in.)	3.47 m (11 ft. 4 in.)
S Dump Clearance, Bucket at 45 deg.	2.70 m (8 ft. 10 in.)	2.66 m (8 ft. 9 in.)	2.67 m (8 ft. 9 in.)
T Reach at Full Height, Bucket at 45 deg.	730 mm (28.7 in.)	772 mm (30.4 in.)	772 mm (30.4 in.)
U Digging Depth Below Ground, Bucket Level	135 mm (5.3 in.)	135 mm (5.3 in.)	131 mm (5.1 in.)
V Length From Front Axle Centerline to Bucket Cutting Edge	2.03 m (6 ft. 8 in.)	2.09 m (6 ft. 10 in.)	2.08 m (6 ft. 10 in.)

Lift Capacity With Quick-Coupler Forks [see line art below]

Hydraulic Capacity	1219-mm (48 in.) Tines	1524-mm (60 in.) Tines
A ¹ Maximum Height	2019 kg (4,452 lb.)	1887 kg (4,161 lb.)
B ¹ Maximum Reach	3158 kg (6,963 lb.)	2978 kg (6,565 lb.)
C ¹ At Ground Line	4009 kg (8,839 lb.)	3792 kg (8,360 lb.)
D ¹ Below Ground Line	206 mm (8.1 in.)	206 mm (8.1 in.)

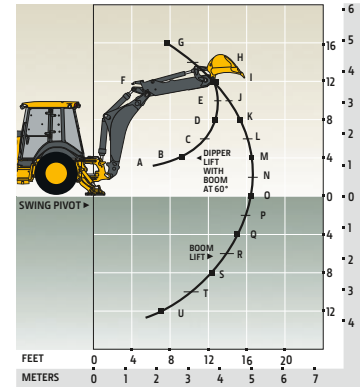


Lift Capacities [see line art at right]

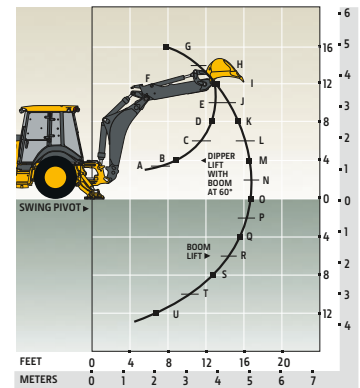
Lift capacities are over-end values in kg (lb.). Figures listed are 100% of the maximum lift force available.

	With Standard Dipperstick		With 1.21-m (4 ft. 0 in.) Extendable Dipperstick, Retracted		With 1.21-m (4 ft. 0 in.) Extendable Dipperstick, Extended	
	Standard Lift	Lift Mode (EPA FT4/EU Stage IV only)	Standard Lift	Lift Mode (EPA FT4/EU Stage IV only)	Standard Lift	Lift Mode (EPA FT4/EU Stage IV only)
A	7747 kg (17,080 lb.)	7747 kg (17,080 lb.)	7508 kg (16,553 lb.)	7508 kg (16,553 lb.)	4957 kg (10,928 lb.)	5327 kg (11,743 lb.)
B	6041 kg (13,318 lb.)	6041 kg (13,318 lb.)	5826 kg (12,845 lb.)	5826 kg (12,845 lb.)	3141 kg (6,924 lb.)	3492 kg (7,698 lb.)
C	4469 kg (9,852 lb.)	4469 kg (9,852 lb.)	4277 kg (9,429 lb.)	4277 kg (9,429 lb.)	2729 kg (6,015 lb.)	3036 kg (6,693 lb.)
D	4024 kg (8,871 lb.)	4024 kg (8,871 lb.)	3838 kg (8,461 lb.)	3838 kg (8,461 lb.)	2513 kg (5,541 lb.)	2798 kg (6,169 lb.)
E	3745 kg (8,256 lb.)	3899 kg (8,596 lb.)	3621 kg (7,983 lb.)	3714 kg (8,189 lb.)	2358 kg (5,199 lb.)	2626 kg (5,790 lb.)
F	3305 kg (7,285 lb.)	3662 kg (8,074 lb.)	3180 kg (7,010 lb.)	3537 kg (7,798 lb.)	2212 kg (4,876 lb.)	2464 kg (5,433 lb.)
G	1641 kg (3,617 lb.)	1828 kg (4,029 lb.)	1481 kg (3,265 lb.)	1668 kg (3,677 lb.)	2037 kg (4,492 lb.)	2271 kg (5,008 lb.)
H	2125 kg (4,685 lb.)	2374 kg (5,234 lb.)	1943 kg (4,284 lb.)	2192 kg (4,833 lb.)	1788 kg (3,942 lb.)	1996 kg (4,401 lb.)
I	2252 kg (4,965 lb.)	2519 kg (5,554 lb.)	2061 kg (4,544 lb.)	2328 kg (5,133 lb.)	1091 kg (2,406 lb.)	1235 kg (2,722 lb.)
J	2287 kg (5,042 lb.)	2561 kg (5,646 lb.)	2090 kg (4,608 lb.)	2364 kg (5,212 lb.)	1355 kg (2,988 lb.)	1533 kg (3,381 lb.)
K	2286 kg (5,039 lb.)	2562 kg (5,648 lb.)	2084 kg (4,595 lb.)	2361 kg (5,204 lb.)	1479 kg (3,260 lb.)	1674 kg (3,690 lb.)
L	2268 kg (4,999 lb.)	2544 kg (5,609 lb.)	2063 kg (4,547 lb.)	2339 kg (5,157 lb.)	1543 kg (3,402 lb.)	1748 kg (3,854 lb.)
M	2243 kg (4,944 lb.)	2518 kg (5,551 lb.)	2034 kg (4,485 lb.)	2310 kg (5,092 lb.)	1577 kg (3,477 lb.)	1788 kg (3,943 lb.)
N	2215 kg (4,884 lb.)	2490 kg (5,489 lb.)	2004 kg (4,418 lb.)	2278 kg (5,023 lb.)	1594 kg (3,514 lb.)	1809 kg (3,988 lb.)
O	2189 kg (4,827 lb.)	2463 kg (5,429 lb.)	1975 kg (4,354 lb.)	2248 kg (4,956 lb.)	1601 kg (3,529 lb.)	1818 kg (4,009 lb.)
P	2167 kg (4,778 lb.)	2440 kg (5,380 lb.)	1949 kg (4,298 lb.)	2222 kg (4,899 lb.)	1602 kg (3,531 lb.)	1821 kg (4,015 lb.)
Q	2153 kg (4,746 lb.)	2426 kg (5,349 lb.)	1931 kg (4,257 lb.)	2204 kg (4,860 lb.)	1599 kg (3,526 lb.)	1820 kg (4,013 lb.)
R	2150 kg (4,741 lb.)	2426 kg (5,348 lb.)	1924 kg (4,242 lb.)	2200 kg (4,849 lb.)	1596 kg (3,519 lb.)	1818 kg (4,009 lb.)
S	2171 kg (4,786 lb.)	2452 kg (5,406 lb.)	1938 kg (4,274 lb.)	2220 kg (4,893 lb.)	1594 kg (3,514 lb.)	1818 kg (4,007 lb.)
T	2247 kg (4,953 lb.)	2541 kg (5,603 lb.)	2004 kg (4,418 lb.)	2299 kg (5,068 lb.)	1594 kg (3,515 lb.)	1820 kg (4,013 lb.)
U	2578 kg (5,684 lb.)	2923 kg (6,444 lb.)	2306 kg (5,084 lb.)	2651 kg (5,844 lb.)	1600 kg (3,527 lb.)	1828 kg (4,031 lb.)
V	—	—	—	—	1614 kg (3,558 lb.)	1847 kg (4,071 lb.)
W	—	—	—	—	1643 kg (3,623 lb.)	1882 kg (4,150 lb.)
X	—	—	—	—	1703 kg (3,755 lb.)	1953 kg (4,306 lb.)
Y	—	—	—	—	1843 kg (4,064 lb.)	2116 kg (4,665 lb.)
Z	—	—	—	—	2465 kg (5,435 lb.)	2832 kg (6,245 lb.)

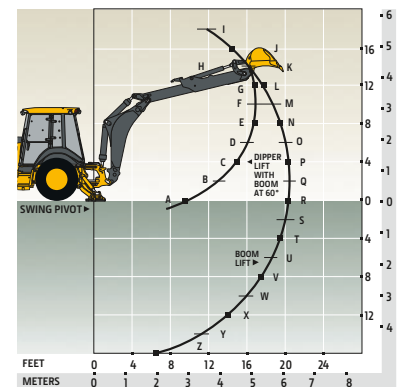
Lift capacities are over end with stabilizers down and tires tangent to ground.



With Standard Dipperstick



With Extendable Dipperstick, Retracted



With Extendable Dipperstick, Extended

Additional equipment

Key: ● Standard ▲ Optional or special

See your John Deere dealer for further information.

410 P Engine

- Coolant recovery tank with low-level indicator
- Foldout, hinged cooling system
- Serpentine belt with automatic belt tensioner
- Electronically controlled, variable-rate suction-type cooling fan
- Self-cleaning exhaust aftertreatment system
- ▲ Chrome exhaust extension
- Grid heat
- ▲ 1,000-watt electric engine coolant heater
- Electronic fuel lift pump

Powertrain

- PowerShift™ transmission: Torque converter with twist-grip Transmission Control Lever (TCL) and neutral safety switch interlock (1st through 5th gears) 5th-gear overdrive
- AutoShift transmission
- Transmission oil cooler
- ▲ Transmission remote oil-sampling port
- Differential lock, electric foot actuated, protection on/off (software enabled)
- Auto shutdown
- Planetary final drives
- Power-assisted hydraulic service brakes (conform to ISO 3450): Inboard, wet multi-disc, self-adjusting and self-equalizing
- Parking/emergency brake with electric switch control (conforms to ISO 3450): Spring applied, hydraulically released wet multi-disc / Independent of service brakes

410 P Powertrain (continued)

- Hydrostatic power steering with emergency manual mode
- ▲ Non-powered front axle
- Mechanical-front-wheel drive (MFWD) with traction-control limited-slip differential: Electric on/off control / Sealed axle
- Automatic MFWD braking
- ▲ MFWD driveshaft guard

Backhoe

- Lift mode
- Precision mode
- Standard dipperstick digging depth
- 4.85 m (15 ft. 11 in.)
- Extendable dipperstick extension
- ▲ 1.21 m (4 ft. 0 in.)
- Heavy-duty (HD) backhoe bucket cylinder
- 2-lever pilot controls with pattern-selection feature
- Backhoe transport lock lever
- Swing lock pin stored in operator's station
- Stabilizers with 2-direction anti-drift valves
- Extended (long) stabilizers with reversible pads
- ▲ Severe-duty backhoe bucket with lift loops
- ▲ Backhoe couplers for John Deere, Case, and Cat buckets
- ▲ Auxiliary backhoe valve with 1-way flow for hammers and compactors with plumbing
- ▲ Auxiliary backhoe valve with 1- and 2-way flow for swingers, thumbs, augers, etc. with plumbing

410 P Backhoe (continued)

- ▲ Hydraulic thumb
- ▲ Rear hydraulic coupler
- ▲ Spring-type coupler
- Loader†
- Loader bucket anti-spill (rollback)
- Return-to-dig feature
- Single-lever control with electric clutch disconnect
- Bucket-level indicator
- Loader boom service lock
- Loader valve with integrated anti-drift checks for hydraulic cylinders controlling loader boom up and bucket dump
- ▲ Auxiliary loader hydraulics with single control lever with EH auxiliary control (MFWD and clutch disconnect)
- ▲ Hydraulic coupler for buckets, forks, etc.
- ▲ Auto ride control

Hydraulic System

- 163-L/m (43 gpm) axial-piston pump, pressure-compensated load-sensing (PCLS) system
- Auto-idle
- Economy mode
- Dedicated hydraulic reservoir

Electrical System

- 12-volt system
- 145-amp alternator
- Single battery with 175-min. reserve capacity and 950 CCA
- ▲ Dual batteries with 350-min. reserve capacity and 1,900 CCA
- ▲ Remote jump posts and battery disconnect

†See dealer for range of HD, multipurpose, and coupler buckets and forks.

While general information, pictures, and descriptions are provided, some illustrations and text may include product options and accessories NOT AVAILABLE in all regions, and in some countries products and accessories may require modifications or additions to ensure compliance with the local regulations of those countries.

Net engine power is with standard equipment including air cleaner, exhaust system, alternator, and cooling fan at test conditions specified per ISO 9249. Specifications and design are subject to change without notice. Wherever applicable, specifications are in accordance with ISO standards. Except where otherwise noted, these specifications are based on a unit with 21L-24-in. 12PR (R4) tubeless rear and 12.5/80-18 10PR (R4) front tires, and 1.15-m³ (1.5 cu. yd.) loader bucket.

Additional equipment *(continued)*

Key: ● Standard ▲ Optional or special

See your John Deere dealer for further information.

410 P Lights

- Halogen lights (10), 32,500 candlepower each (4 front driving/working, 4 rear working, and 2 side docking)
- Turn signal/flashing (2 front and 2 rear)
- Rear stop and tail (2)
- ▲ LED light package
- ▲ Boom-light field kit (2 LED floods)

Operator's Station

- Modular-design ROPS/FOPS (Level 2) canopy with molded roof (meets ISO 3449 and ISO 3471/SAE J1040): Isolation mounted
- Molded floor mats (with pilot controls only)
- 12-volt outlet
- Lockable right-side storage
- ▲ Lockable left-hand storage with cup holders
- ▲ Interior front-view mirror
- ▲ Outside rearview mirrors
- Rotary-dial hand throttle
- Suspended foot throttle
- Mechanical-suspension seat, cloth cover
- ▲ Air-suspension heated seat (with cab only)
- ▲ Air-suspension vinyl seat
- Tilt steering, infinitely adjustable (with cab only)
- ▲ Tilt steering, infinitely adjustable (with canopy and quarter cab)

410 P Operator's Station *(continued)*

- Keyless start
- Machine security (enabled through monitor)
- Digital display of engine hours, engine rpm, and system voltage
- Sealed-switch module (SSM)
- Multi-function lever: Turn signals / Windshield wipers / Some light functionality
- Monitor system with audible and visual warnings: Engine air restriction / Low alternator voltage / Engine oil pressure / Hydraulic filter restriction / Parking brake on/off / Aftertreatment temperature / Transmission fluid temperature / Fuel / Hour meter / Machine diagnostic information via 4-push-button/LCD operator interface
- **Canopy:** Mechanical-suspension deluxe vinyl swivel seat with lumbar adjustment and armrests (fully adjustable)
- ▲ **Cab with Dual Doors and A/C:** Mechanical-suspension deluxe fabric swivel seat with lumbar adjustment / Headliner, dome light, left and right cab doors, tinted safety glass, windshield wipers (1 rear and 1 front), front windshield washer, fresh-air intake, and heater/defroster/pressurizer (11.7-kW [40,000 Btu/h] heater) / A/C (7.6-kW [26,000 Btu/h] output and CFC-free R134a refrigerant)

410 P Operator's Station *(continued)*

- ▲ AM/FM/weather-band (WB) radio (with cab only)
 - ▲ Premium radio package (with cab only; includes additional 12-volt and USB outlets)
- ## Overall Vehicle
- 1-piece unitized construction mainframe
 - Vehicle tie-downs (2 front and 2 rear)
 - Remote grease bank for front axle
 - Front bumper cover
 - ▲ HD front bumper
 - ▲ Front counterweight – 204 kg (450 lb.), 340 kg (750 lb.), 454 kg (1,000 lb.), or 567 kg (1,250 lb.)
 - ▲ Rubber grille bumpers
 - Fuel tank, 128.7 L (34 gal.), ground-level fueling
 - 2-position easy-tilt hood
 - Extended grille frame
 - Toolbox with padlock hasp
 - Vandal protection for locking monitor, engine hood, toolbox, hydraulic reservoir, and fuel tank
 - Reverse warning alarm
 - Dent-resistant full-coverage rear fenders
 - ▲ Backhoe boom-protection plate
 - JDLink™ wireless communication system (available in specific countries; see your dealer for details)
 - ▲ HD front grille screen
 - ▲ HD stabilizer pads

While general information, pictures, and descriptions are provided, some illustrations and text may include product options and accessories NOT AVAILABLE in all regions, and in some countries products and accessories may require modifications or additions to ensure compliance with the local regulations of those countries.

Net engine power is with standard equipment including air cleaner, exhaust system, alternator, and cooling fan at test conditions specified per ISO 9249. Specifications and design are subject to change without notice. Wherever applicable, specifications are in accordance with ISO standards. Except where otherwise noted, these specifications are based on a unit with 21L-24-in. 12PR (R4) tubeless rear and 12.5/80-18 10PR (R4) front tires, and 1.15-m³ (1.5 cu. yd.) loader bucket.



MB410PAU (23-03)



JOHN DEERE