

REPLACEMENT PARTS GUIDE

410E II Articulated Dump Truck (PIN: 1DW410E__ _D708125—)



Steering Cylinder Seals

[AT454030](#)

Interval (hrs) - As Required.



Hydraulic System Return Filter Element

[AT335977](#)

Interval (hrs) - 4000.



AXLE OIL FILTER

[AT418095](#)

Interval (hrs) - 2000.



TRANSMISSION OIL FILTER

[AT468647](#)

Interval (hrs) - 2000.



HYDRAULIC RESERVOIR BREATHER

[AM39653](#)

Interval (hrs) - 4000.



ENGINE ROCKER ARM COVER GASKET(LOWER) - [R529889](#)

Interval (hrs) - 2000.



ENGINE ROCKER ARM COVER GASKET(UPPER)

[R531581](#)

Interval (hrs) - 2000.



ENGINE ROCKER ARM COVER GASKET(UPPER)

[R531582](#)

Interval (hrs) - 2000.



CAB RECIRCULATING AIR FILTER

[AT307501](#)

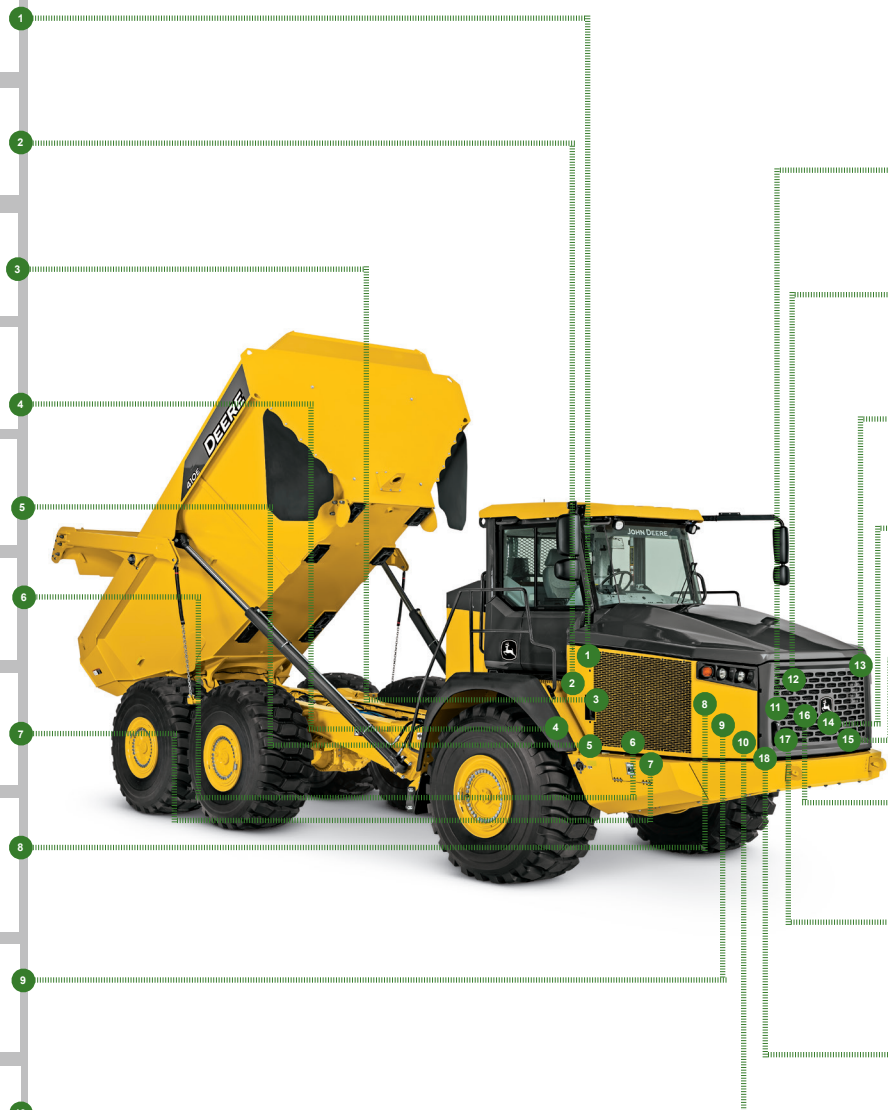
Interval (hrs) - As Required.



PRIMARY ENGINE AIR FILTER ELEMENT

[RE261960](#)

Interval (hrs) - 2000.



PRIMARY FUEL FILTER ELEMENT

[RE539465](#)

Interval (hrs) - 500.



FAST FILL FUEL BREATHER (IF EQUIPPED)

[T225008](#)

Interval (hrs) - 500.



CAB FRESH AIR FILTER

[AT191102](#)

Interval (hrs) - As Required.



ENGINE OIL FILTER

[RE572785](#)

Interval (hrs) - 500.



FINAL FUEL FILTER ELEMENT

[DZ112918](#)

Interval (hrs) - 500.



FUEL TANK BREATHER

[H216169](#)

Interval (hrs) - 2000.



SECONDARY ENGINE AIR FILTER ELEMENT - [RE230985](#)

[RE230985](#)

Interval (hrs) - 6000.



AUXILIARY FUEL FILTER WITH WATER SEPARATOR (IF EQUIPPED) - [AT365869](#)

[AT365869](#)

Interval (hrs) - 500.

OIL & CAPACITIES INFORMATION

410E II Articulated Dump Truck (PIN: 1DW410E___D708125—)

Part Description	Qty or capacity	Change Interval In Hours
John Deere Plus-50™ II Engine Oil ^{2,5}	55.0L (14.5 gal)	500
John Deere HD Synthetic Transmission Fluid ^{3,5}	60.0 L (15.9 gal)	2000
John Deere Hy-Gard™ Front Axle Oil ^{2,5}	62.0 L (16.4 gal)	2000
John Deere Hy-Gard™ Middle Axle Oil ^{2,5}	62.0 L (16.4 gal)	2000
John Deere Hy-Gard™ Rear Axle Oil ^{2,5}	68.0 L (18.0 gal)	2000
John Deere Hydrau™ Hydraulic System Oil ⁵	176.0L (46.5 gal)	4000
John Deere COOL-GARD™ II Pre-Mix	90.0L (23.8 gal)	6000

OIL & CAPACITIES INFORMATION

410E II Articulated Dump Truck (PIN: 1DW410E_ _ _D708125—)

Fluid Analysis Kits ⁶			
Part Description	Part Number	Qty or Capacity	Change Interval In Hours
Diesel Engine Oil Kit	AT346594	1	250
Transmission Oil Kit	AT346594	1	500
Axle Oil Kit	AT346594	3	500
Hydraulic Oil Kit	AT346594	1	500
Diesel Fuel Kit	TY27329	1	500
Engine Coolant Kit	TY27787	1	500

²Interval not to exceed 12 months.

³Interval not to exceed 24 months.

⁵See operator's manual for recommended oil type and oil viscosities based on operating temperatures.

⁶Based on fluid analysis results, intervals may need to be adjusted for operating conditions. Consult an authorized John Deere dealer.

Plus-50 is a trademark of Deere & Company

Hydrau is a trademark of Deere & Company

Hy-Gard is a trademark of Deere & Company

Cool-Gard is a trademark of Deere & Company



Service Intervals

As Required	
<input type="checkbox"/> Clean and tighten battery terminals	<input type="checkbox"/> Check wheel bolt torque
<input type="checkbox"/> Drain primary and auxiliary fuel filter with water separator	<input type="checkbox"/> Clean axle suction screens
<input type="checkbox"/> Check engine air cleaner elements	<input type="checkbox"/> Inspect steering cylinder seals
<input type="checkbox"/> Check windshield washer fluid level	<input type="checkbox"/> Check cab air filters
<input type="checkbox"/> Inspect serpentine belt	<input type="checkbox"/> Lubricate engine-to-transmission drive shaft sliding joint
<input type="checkbox"/> Clean cooler cores	<input type="checkbox"/> Check service brake disc wear
<input type="checkbox"/> Inspect tires and check pressure	<input type="checkbox"/> Check rear camera (if equipped)
Every 10 Hours or Daily	
<input type="checkbox"/> Check engine oil level	<input type="checkbox"/> Check hydraulic system oil level
<input type="checkbox"/> Clean dust unloader valve	<input type="checkbox"/> Check transmission oil level
<input type="checkbox"/> Check engine coolant level	
Every 50 Hours or Weekly	
<input type="checkbox"/> Lubricate articulation joint, oscillation joint, and through-drive bearing	<input type="checkbox"/> Lubricate tailgate pivots (if equipped)
<input type="checkbox"/> Lubricate greaseable steering cylinder pins	<input type="checkbox"/> Lubricate bin pivots
<input type="checkbox"/> Lubricate lift cylinders	<input type="checkbox"/> Inspect automatic lubrication components (if equipped)
Every 250 Hours	
<input type="checkbox"/> Take engine oil sample	
Initial Service - 500 Hours ¹	
<input type="checkbox"/> Replace axle oil filters ²	<input type="checkbox"/> Perform load sense calibration (cab monitor)
<input type="checkbox"/> Run transmission clutch calibration (cab monitor)	
Every 500 Hours	
<input type="checkbox"/> Check hybrid battery electrolyte level (if equipped)	<input type="checkbox"/> Refill automatic lubrication grease reservoir (if equipped)
<input type="checkbox"/> Take diesel fuel sample	<input type="checkbox"/> Replace auxiliary fuel filter with water separator (if equipped)
<input type="checkbox"/> Take axle oil sample	<input type="checkbox"/> Replace final fuel filter
<input type="checkbox"/> Take transmission oil sample	<input type="checkbox"/> Drain and refill engine oil and replace filter ²
<input type="checkbox"/> Take coolant sample	<input type="checkbox"/> Check air intake hoses and charge air cooler tube couplings
<input type="checkbox"/> Take hydraulic oil sample	<input type="checkbox"/> Replace fuel tank breather (if equipped) with fast fill
<input type="checkbox"/> Replace primary fuel filter with water separator	<input type="checkbox"/> Check park brake pad wear and lubricate linkage
Every 1000 Hours	
<input type="checkbox"/> Check coolant condition	<input type="checkbox"/> Check and adjust dump body shock pads
<input type="checkbox"/> Check axle oil levels	

Service Intervals

Every 2000 Hours	
<input type="checkbox"/> Replace primary air cleaner element	<input type="checkbox"/> Replace transmission oil filters ³
<input type="checkbox"/> Replace axle oil filters ²	<input type="checkbox"/> Drain and refill transmission oil ³
<input type="checkbox"/> Check and adjust engine valve lash	<input type="checkbox"/> Lubricate axle seals ⁴
<input type="checkbox"/> Replace fuel tank breather filter	<input type="checkbox"/> Clean and inspect axle breathers
<input type="checkbox"/> Drain and refill axle oil ²	<input type="checkbox"/> Inspect auto-lube internal pump filter (if equipped)
<input type="checkbox"/> Run transmission clutch calibration (cab monitor)	
Every 4000 Hours	
<input type="checkbox"/> Clean hydraulic fan drive case drain in-line screen	<input type="checkbox"/> Drain and refill hydraulic system oil
<input type="checkbox"/> Clean hydraulic system fill strainer	<input type="checkbox"/> Replace hydraulic reservoir breather filter
<input type="checkbox"/> Replace hydraulic system return filter	<input type="checkbox"/> Perform load sense calibration (cab monitor)
<input type="checkbox"/> Clean hydraulic pump case drain in-line screen	
Every 6000 Hours	
<input type="checkbox"/> Replace secondary air cleaner element	<input type="checkbox"/> Inspect driveline torsional coupler
<input type="checkbox"/> Drain and refill engine cooling system	