

# REPLACEMENT PARTS GUIDE

## 759J (PIN: 1T0759JX\_\_C220453)



USE WITH RE529972 ENGINE ROCKER ARM COVER

[R518263](#)

Interval (hrs) - 2000.

USE WITH RE536705 ENGINE ROCKER ARM COVER

[R527884](#)

Interval (hrs) - 2000.

CAB FRESH AIR FILTER

[700093800](#)

Interval (hrs) - As Required.

CAB RECIRCULATING AIR FILTER

[F436088](#)

Interval (hrs) - As Required.

ENGINE CRANKSHAFT DAMPER KEY

[R523306](#)

Interval (hrs) - 4000.

ENGINE CRANKSHAFT DAMPER

[RE520465](#)

Interval (hrs) - 4000.

ENGINE CRANKSHAFT DAMPER

[RE57604](#)

Interval (hrs) - 4000.

HYDRAULIC SYSTEM RETURN OIL FILTER

[F061786](#)

Interval (hrs) - 2000.

V-BELT

[T428855](#)

Interval (hrs) - As Required.

ENGINE AIR FILTER ELEMENT—PRIMARY

[AT175223](#)

Interval (hrs) - As Required.

ENGINE AIR FILTER ELEMENT—SECONDARY

[AT175224](#)

Interval (hrs) - As Required.

HYDRAULIC BREATHER FILTER

[F122930](#)

Interval (hrs) - 2000.

PRIMARY AND FINAL FUEL FILTER ELEMENT KIT

[RE525523](#)

Interval (hrs) - 500.

PRIMARY AND FINAL FUEL FILTER ELEMENT KIT

[AT365870](#)

Interval (hrs) - 500.

HYDRAULIC BREATHER FILTER

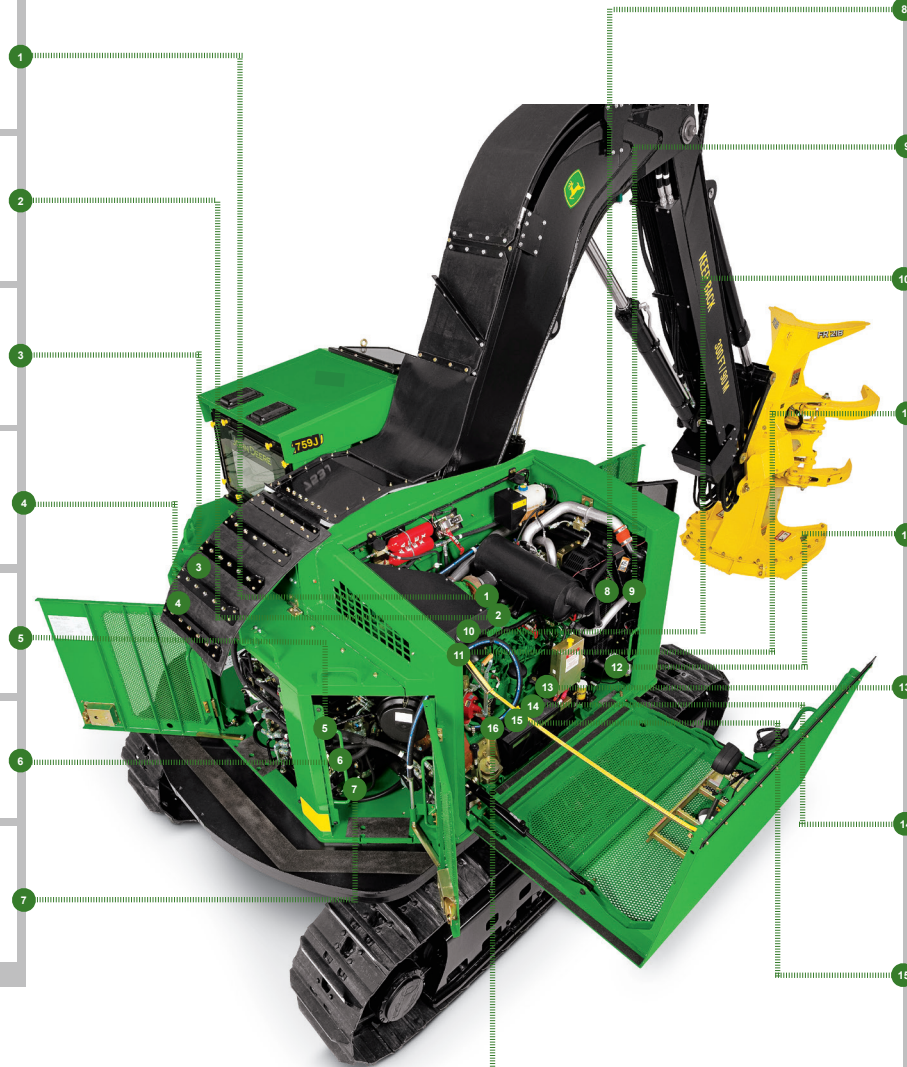
[R502778](#)

Interval (hrs) - 500.

HYDRAULIC BREATHER FILTER

[RE509672](#)

Interval (hrs) - 500.











**JOHN DEERE**  
Genuine Parts and Service

CLICK PART NUMBER TO BUY

\*See operator's manual for additional details.

# OILS AND CAPACITIES INFORMATION

759J (PIN: 1T0759JX\_\_C220453)

Part Description	Part Number	Qty or capacity	Change Interval In Hours
John Deere Plus-50™ II Engine Oil 	<a href="#">TY26674<sup>3</sup></a>	31.0 L (8.2 gal.)	500
API GL-5 Gear Oil, Swing Drive Gear Case 	<a href="#">TY26372<sup>3</sup></a>	4.5 L (4.8 gal.)	1000
API GL-5 Gear Oil, Track Planetary Gear Case (each) 	<a href="#">TY26372<sup>3</sup></a>	4.8 L (5.1 gal.)	500
John Deere Hy-Gard™ Pump Drive Gear Case Oil 	<a href="#">TY6354<sup>3</sup></a>	6.2 L (6.5 gal.)	1000
DEXRON® III ATF Enclosure Door Pump Oil 	<a href="#">TY26459</a>	1.6 L (1.7 gal)	2000
John Deere Plus-50™ II Hydraulic Oil 	<a href="#">TY26671<sup>3</sup></a>	136.0 L (36.0 gal.)	2000
COOL-GARD™ II Pre-Mix 	<a href="#">TY26575</a>	36.0 L (9.5 gal.)	6000
Coolant Extender 	<a href="#">TY26603</a>	As Required	As Required

# OILS AND CAPACITIES INFORMATION

## 759J (PIN: 1T0759JX\_\_C220453)

Part Description	Part Number	Qty or capacity	Change Interval In Hours
<b>Fluid Analysis Kits<sup>4</sup></b>			
Diesel Engine Oil	<a href="#">AT346594</a>	1	500
Hydraulic Oil	<a href="#">AT346594</a>	1	500
Track Drive Planetary Oil	<a href="#">AT346594</a>	2	500
Swing Gear Case Oil	<a href="#">AT346594</a>	1	500
Pump Drive Gear Case Oil	<a href="#">AT346594</a>	1	500
Diesel Fuel	<a href="#">AT180344</a>	1	500
Engine Coolant	<a href="#">TY27787</a>	1	500
COOL-GARD™ II Test Strips	<a href="#">TY26605</a>	1	1000

<sup>3</sup> See operator's manual for recommended oil type and oil viscosities based on operating temperatures.

<sup>4</sup> Based on fluid analysis results, intervals may need to be adjusted for your operating conditions. Consult your local John Deere dealer.

*Plus-50 is a trademark of Deere & Company*

*Hy-Gard is a trademark of Deere & Company*

*Hydrau is a trademark of Deere & Company*

*Cool-Gard is a trademark of Deere & Company*

## Service Intervals

As Required	
• Inspect serpentine belt	• Check and clean cab fresh air and cab recirculation air filters
• Inspect undercarriage frame joints	• Add coolant extender as indicated by COOL-GARD™ II test strips
• Replace engine air filter elements (replace secondary element every third primary element cleaning or change)	
Every 10 Hours or Daily	
• Lubricate hoist (boom) joints and cylinder ends	• Check pump drive gear case oil level
• Check and clean radiator pre-screen	• Check swing drive gear case oil level
• Check coolant level	• Check hydraulic oil level
• Check and clean cooling system and condenser fins	• Check fire extinguisher
• Fire suppression system—if equipped <sup>1</sup>	• Check and adjust track sag
• Check engine oil level	• Lubricate swing pinion and bearing
• Check and drain fuel/water separator	• Lubricate leveler pivot joints (759J/JH)
• Check and drain auxiliary fuel filter/water separator—if equipped	
Every 100 Hours	
• Check track drive planetary oil level	• Check engine rpm
• Lubricate door hinges	• Check oil level in track idler assembly
• Lubricate secondary exit latches and knobs	• Lubricate swing gear case bearing
• Check skylight latch tension	• Lubricate rotary manifold (759J/JH)
Initial Service - 250 Hours	
• Drain and refill engine break-in oil and replace filter	• Check planetary and sprocket mounting cap screw torque
• Drain and refill pump drive gear case oil	• Check swing bearing cap screw torque
• Drain and refill swing gear case oil	• Check lower roller mounting cap screw torque
• Check hydraulic pressures	• Check track shoe cap screw torque
• Drain and refill track drive planetary oil	
Every 500 Hours	
• Drain and refill engine oil and replace filter	• Take engine oil sample
• Drain and refill track drive planetary oil	• Take pump drive gear case oil sample
• Check enclosure door pump oil level	• Take swing gear case oil sample
• Check battery electrolyte level	• Take track drive planetary oil sample
• Replace fuel/water separator filter	• Take hydraulic oil sample
• Replace final fuel filter	• Take coolant sample
• Replace auxiliary fuel filter/water separator—if equipped	• Take diesel fuel sample
Every 1000 Hours	
• Drain and refill pump drive gear case oil	• Check coolant
• Drain and refill swing gear case oil	
Every 2000 Hours	
• Check and adjust engine valve lash clearance	• Replace hydraulic oil return filters
• Drain and refill enclosure door pump oil	• Replace hydraulic breather filter
• Drain and refill hydraulic oil	
Every 4000 Hours	
• Replace engine crankshaft dampers	
Every 6000 Hours	
• Drain and refill engine coolant	