



# REPLACEMENT PART GUIDE

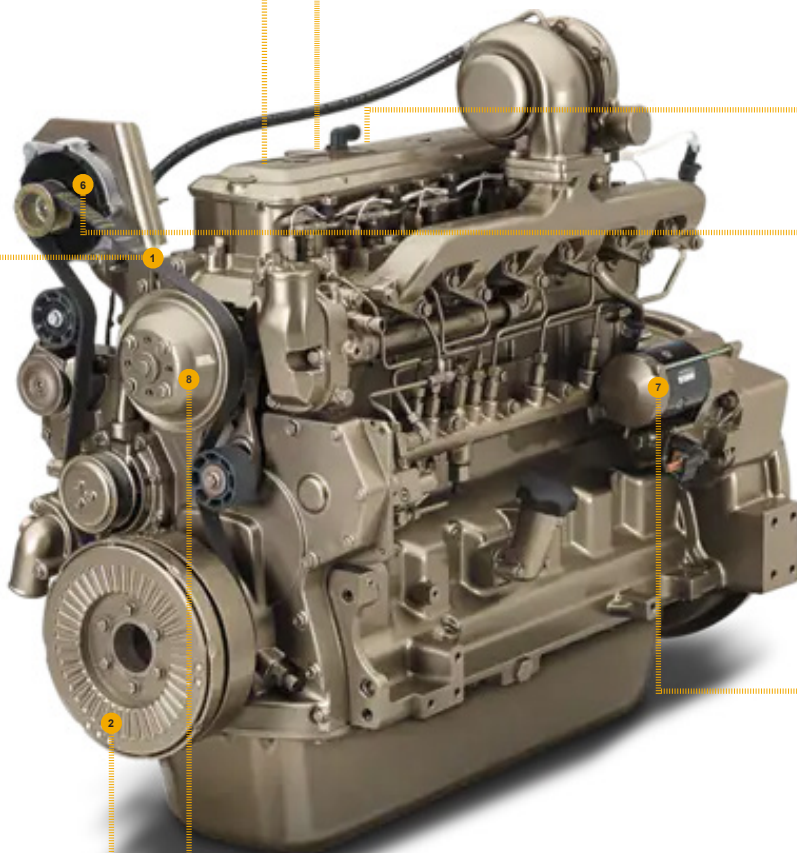
## PowerTech 6.8L 6068HF475 OEM Engine

### FAN BELT

- [DZ114929](#) (LGTH=1655 MM) (24DO) (24FK) (24DS)
- [DZ115812](#) (LGTH=1680 MM) (24EF)
- [DZ117267](#) (LGTH=1690 MM) (24EC)
- [DZ117268](#) (LGTH=1530 MM) (24BK)
- [DZ118781](#) (LGTH=1700 MM) (24DZ)
- [DZ118815](#) (LGTH=1725 MM) (24ED)
- [DZ119060](#) (LGTH=1555 MM) (2471)
- [DZ119062](#) (LGTH=1545 MM) (240D)
- [DZ119063](#) (LGTH=1560 MM) (2472)
- [DZ119416](#) (LGTH=1595 MM) (2413) (2475)
- [DZ119477](#) (LGTH=1565 MM) (240V) (2423) (2476)
- [DZ119478](#) (LGTH=1570 MM) (24FE)
- [DZ119515](#) (LGTH=1585 MM) (2443) (2473) (2474)
- [DZ119516](#) (LGTH=1600 MM) (2441) (2435) (24DB) (24DD)
- [DZ119520](#) (LGTH=1605 MM) (2417) (2478)
- [DZ119521](#) (LGTH=1610 MM) (2412) (24DT) (24DL)
- [DZ119522](#) (LGTH=1630 MM) (2419) (24DM)
- [DZ119530](#) (LGTH=1675 MM) (2427) (24DQ)
- [DZ119715](#) (LGTH=1625 MM) (2429)(2438) (2482) (24DF) (24DR)
- [R134625](#) (LGTH=1645 MM) (24DP)
- [DZ126278](#) (LGTH=2300 MM) (24EG)
- [T428692](#) (LGTH=1665 MM) (24DX) (24DY)
- [T428725](#) (LGTH=1640 MM) (24DG) (24DU)
- [T428818](#) (LGTH=1590 MM) (2424)
- [T428820](#) (LGTH=1580 MM) (240T) (2479) (24AN) (24HV)
- [T428822](#) (LGTH=1615 MM) (24DE) (24DJ)
- [T428823](#) (LGTH=1635 MM) (24DK) (24DN) (24DV)
- [T428825](#) (LGTH=1650 MM) (2425) (2480) (24EE)
- [T428863](#) (LGTH=1620 MM) (24DC)

### CRANKSHAFT PULLEY & DAMPER

- [RE508577](#) (OD=264 MM) (1323)
- [RE57604](#) (OD=271 MM)(6816) (6811)
- [RE508578](#) (OD=264 MM) (1320)
- [RE505939](#) (OD=255 MM) (1321)
- [RE505941](#) (OD=188 MM) (1322)
- [RE508577](#) (OD=264 MM) (1323)
- [RE505940](#) (OD=264 MM) (1330)
- [RE528428](#) (OD=264 MM) (1340)



### FUEL FILTER

- PRIMARY FUEL FILTER**  
[RE509036](#) (8137) (8139)  
 500 hrs of operation or every 12 months.



### SECONDARY FUEL FILTER

- [RE509032](#) (35CR)  
 500 hrs of operation or every 12 months.



### OIL FILTER

- [RE504836](#) (8842) (8843) (8846) (8847) (8848) (8849)  
 500 hrs of operation or every 12 months.



### ALTERNATOR

- [RE533516](#) (12V, 75A) (3109) (3111) (3138) (3139)  
[RE506196](#) (12V, 55A) (3115)  
[DZ117503](#) (24V, 140A) (3127)  
[RE505895](#) (12V, 75A) (3135)  
[RE533653](#) (12V, 95A, ISKRA) (3140)  
[RE533654](#) (12V, 120AMP) (3141)  
[RE537146](#) (28V, 50A, ISKRA) (3142)



### STARTER MOTOR

- [RE70961](#) (24V, 7 KW) (3001)  
[DZ129200](#) (12V, 2.5 KW) (3005)  
[RE70957](#) (12V, 2.5 KW) (3006)  
[RE70960](#) (12V, 4.8 KW) (3010)  
[RE65189](#) (24V, ) (3011)  
[RE549229](#) (12V, ) (3013)  
[RE64474](#) (12V) (3025)  
[RE501166](#) (12V) (3026)  
[RE501150](#) (24V) (3041)  
[RE523502](#) (12V) (3050) (3084)  
[RE70960](#), [RE70957](#) (RH, 12V) (LH, 12V) (3060)  
[RE70961](#), [RE501150](#) (RH, 24V) (LH, 24V) (3061)  
[RE546868](#) (12V, 3.2 KW) (3062)  
[RE523502](#), [RE523501](#) (12V, 4.2 KW, RH) (12V, 4.2KW, LH) (3088)  
[DZ110083](#) (24V, 4KW) (3096)



### FAN PULLEY

- [R113480](#) (OD=173 MM)(8699)  
[R128658](#) (OD=140 MM) (8601) (8604)  
[R128658](#) (OD=145 MM) (8607) (8610) (8629)  
[R128660](#) (OD=168 MM) (8602) (8605) (8608) (8611) (8632)  
[R128662](#) (OD=203 MM) (8603) (8606) (8609) (8612)



**JOHN DEERE**  
 Genuine Parts and Service

CLICK PART NUMBER TO BUY

\*See operator's manual for additional details.



# REMAN PARTS GUIDE

## PowerTech 6.8L 6068HF475 OEM Engine

### ALTERNATOR

- [SE501342](#) (REMAN FOR [AH137883](#)) (25 V, 90 A) (3140)
- [SE501343](#) (REMAN FOR [AH165975](#)) (12 V, 120 A) (3141)
- [SE501341](#) (REMAN FOR [AT161324](#), [DZ114957](#)) (12 V, 45 A) (3142)
- [SE501387](#) (REMAN FOR [AT173624](#), [DZ114956](#)) (12 V, 65 A) (3138)
- [SE501387](#) (REMAN FOR [AT220393](#), [TY6799](#)) (12 V, 65 A) (3109)
- [SE501348](#) (REMAN FOR [AT208541](#), [TY25955](#), [TY6794](#)) (24 V, 80 A) (3125)
- [RM100224](#) (REMAN FOR [RE505895](#)) (12 V, 75 A) (3135)
- [SE501823](#) (REMAN FOR [RE506196](#)) (12 V, 55 A) (3115)
- [SE502626](#) (REMAN FOR [RE533516](#)) (12 V, 75 A) (3139)
- [SE502627](#) (REMAN FOR [RE533653](#)) (12 V, 95 A) (3140)
- [SE502628](#) (REMAN FOR [RE533654](#)) (12 V, 120 A) (3141)



### FUEL INJECTION PUMP

- [SE501915](#) (REMAN FOR [RE507959](#)) (161U) (166L) (165B)



### WATER PUMP

- [SE501609](#) (REMAN FOR [RE546906](#)) (4430) (4426) (4433) (4418)



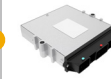
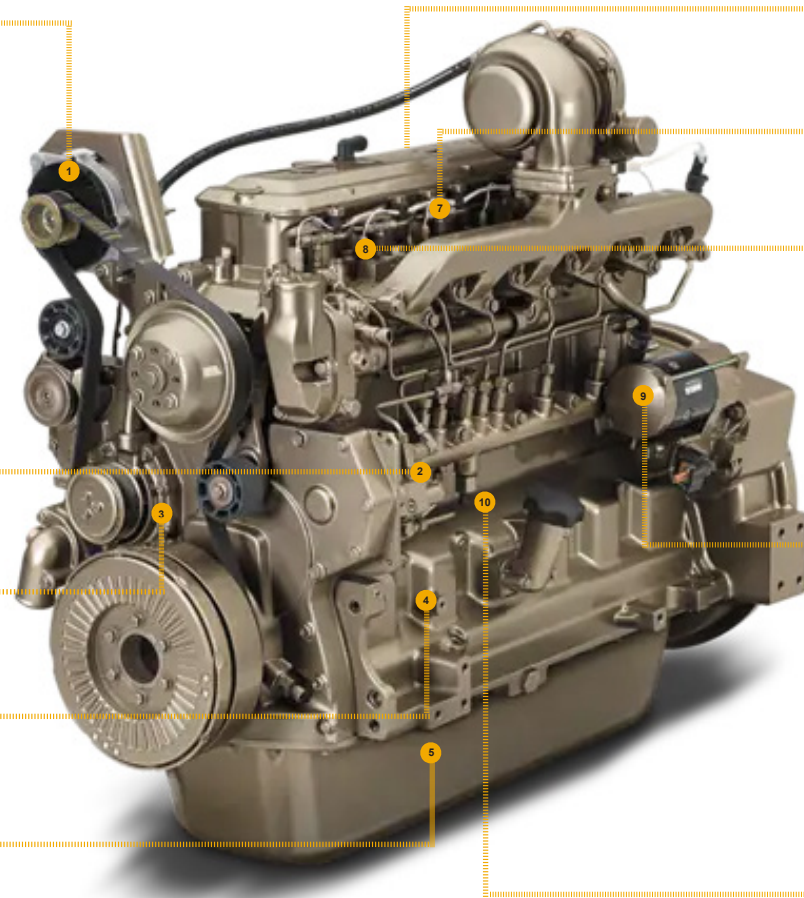
### SHORT BLOCK ASSEMBLY

- [RE571652](#) MARKED [R504850](#)



### OIL PUMP

- [SE501814](#) (REMAN FOR [DZ100057](#)) (5001)



### CONTROLLER

- [SE502849](#) (REMAN FOR [RE522510](#)) (161U) (166L) (165B)



### NOZZLE

- [SE501924](#) (REMAN FOR [RE516540](#)) (166L)



### CYLINDER HEAD

- [SE501584](#) (REMAN FOR [RE553419](#)) (5116)



### STARTER

- [SE501406](#) (REMAN FOR [RE501150](#)) (24 V) (3041) (3061)
- [SE502632](#) (REMAN FOR [RE523502](#)) (3050) (12 V, 4.2 KW) (3084) (3088)
- [SE502631](#) (REMAN FOR [RE523501](#)) (12 V, 4.2 KW) (3088)
- [SE501401](#) (REMAN FOR [RE540301](#)) (12 V, 2.5 KW) (3005)
- [SE502634](#) (REMAN FOR [RE65189](#)) (24V) (3011)
- [SE501409](#) (REMAN FOR [RE65190](#), [RE549229](#), [TY24927](#)) (12 V) (3013)
- [SE501405](#) (REMAN FOR [RE70474](#), [RE70960](#)) (12 V) (3010) (3060)
- [SE501403](#) (REMAN FOR [RE70957](#)) (12 V) (3006, 3060)
- [SE501407](#) (REMAN FOR [RE70961](#)) (24 V) (3001, 3061)



### CONNECTING ROD

- [SE501094](#) (REMAN FOR [RE500608](#)) (4817)



**JOHN DEERE**  
Genuine Parts and Service

CLICK PART NUMBER TO BUY

\*See operator's manual for additional details.