

REPLACEMENT PARTS GUIDE

700J-II Crawler Dozer (PIN: 1T0700JJ__D306726—)



SECONDARY ENGINE AIR FILTER ELEMENT
[AT314583](#)
 Interval (hrs) - As Required.

PRIMARY ENGINE AIR FILTER ELEMENT
[AT300487](#)
 Interval (hrs) - As Required.

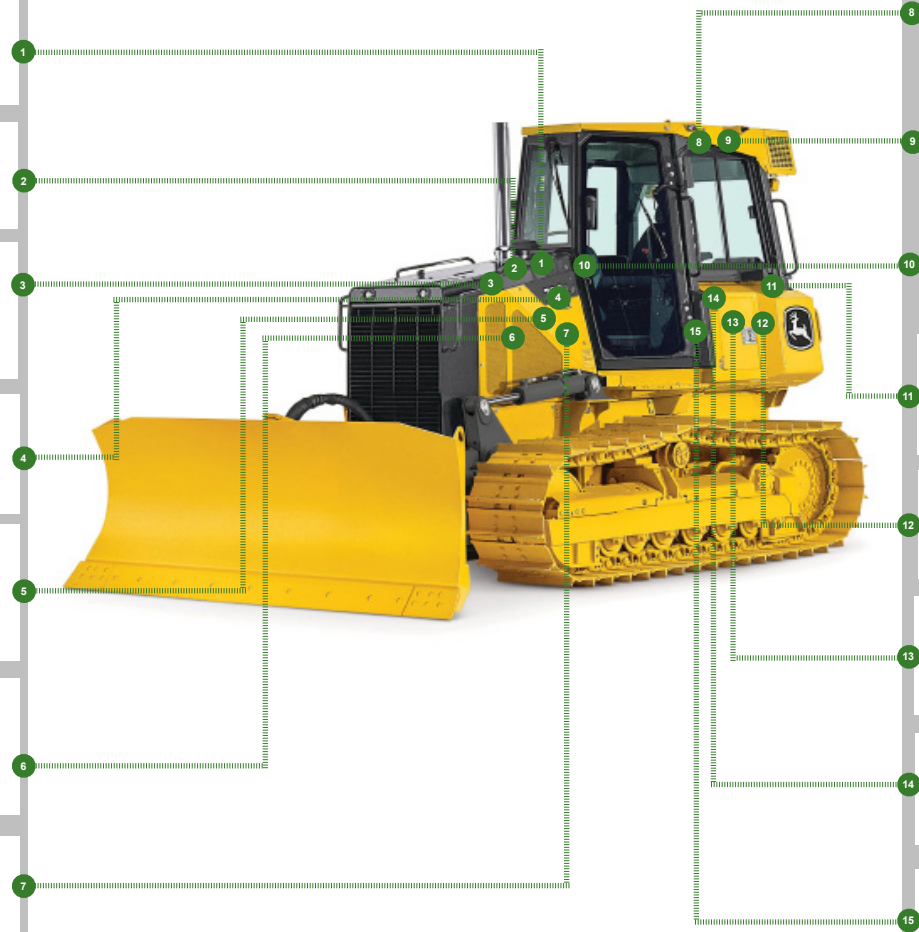
ENGINE AIR CLEANER DUST UNLOADER VALVE
[M89679](#)
 Interval (hrs) - As Required.

WINCH OIL FILTER (IF EQUIPPED)
[AT219961](#)
 Interval (hrs) -500.

WINCH HYDRAULIC BREATHER FILTER (IF EQUIPPED)
[AT101565](#)
 Interval (hrs) -1000.

ENGINE ROCKER ARM COVER GASKET
[R524469](#)
 Interval (hrs) -2000.

ENGINE OIL FILTER
[RE504836](#)
 Interval (hrs) -500.



CAB FRESH AIR FILTER
[AT191102](#)
 Interval (hrs) -2000.

CAB RECIRCULATION FILTER
[AT315957](#)
 Interval (hrs) -2000.

AUXILIARY FUEL FILTER
[AT365870](#)
 Interval (hrs) -500.

FUEL TANK BREATHER
[AT156445](#)
 Interval (hrs) -2000.

PRIMARY FUEL FILTER
[RE529643](#)
 Interval (hrs) -500.

FINAL FUEL FILTER
[RE522878](#)
 Interval (hrs) -500.







HYDROSTATIC TRANSMISSION OIL FILTER
[T366738](#)
 Interval (hrs) -2000.

HYDRAULIC SYSTEM OIL FILTER
[T366738](#)
 Interval (hrs) -2000.



REPLACEMENT PARTS GUIDE

700J-II Crawler Dozer (PIN: 1T0700JJ__D306726—)

Part Description	Part Number	Qty or capacity	Change Interval In Hours
John Deere Plus-50™ II Engine Oil ¹ 	TY26669	19.0 L(5.0 gal)	500
John Deere Hydrau™ Hydrostatic System Oil ¹ 	TY27367	65.1 L(17.2 gal)	2000
John Deere Hydrau™ Hydraulic System Oil ¹ 	TY27367	51.0 L(13.5 gal)	2000
John Deere Hy-Gard™ Final Drive Oil ¹ (eachside) 	TY6354	13.0 L(3.4 gal)	1000
John Deere Hy-Gard™ Winch Oil ¹ (if equipped) 	TY6354	38.0 L(10.0 gal)	1000
COOL-GARD™ II Pre-Mix 	TY26575	21.2 L(5.6 gal)	6000
Fluid Analysis Kits ²			
Diesel Engine Oil	AT346594	1	500
Hydrostatic Transmission Oil	AT346594	1	500
Hydraulic Oil	AT346594	1	500
Final Drive Oil	AT346594	2	500
Diesel Fuel	AT180344	1	500
Engine Coolant	TY26873	1	500
¹ For recommended oil type and oil viscosities based on operating temperatures, see operator's manual. ² Based on fluid analysis results, intervals may need to be adjusted for operating conditions. Consult an authorized John Deere dealer.			

Plus-50 is a trademark of Deere & Company

Hydrau is a trademark of Deere & Company

Hy-Gard is a trademark of Deere & Company

COOL-GARD is a trademark of Deere & Company

Service Intervals

700J-II Crawler Dozer (PIN: 1T0700JJ_ _D306726—)

As Required	
<input type="checkbox"/> Inspect serpentine belt	<input type="checkbox"/> Check and adjust track sag
<input type="checkbox"/> Check and clean engine air filter precleaner	<input type="checkbox"/> Replace primary and secondary engine air filter elements
<input type="checkbox"/> Check air cleaner dust unloader valve	<input type="checkbox"/> Check and drain primary fuel filter and water separator
<input type="checkbox"/> Check and fill windshield washer fluid	<input type="checkbox"/> Check and drain auxiliary fuel filter and water separator (if equipped)
<input type="checkbox"/> Inspect and replace cab fresh air and recirculation air filter elements	<input type="checkbox"/> Inspect and clean cooling package
Every 10 Hours or Daily	
<input type="checkbox"/> Check coolant level	<input type="checkbox"/> Check hydrostatic transmission oil level
<input type="checkbox"/> Lubricate right, left, and center crossbar pivots	<input type="checkbox"/> Check hydraulic oil level
<input type="checkbox"/> Check engine oil level	<input type="checkbox"/> Lubricate dozer linkage and blade socket
Every 50 Hours	
<input type="checkbox"/> Lubricate ripper (if equipped)	
Every 250 Hours	
<input type="checkbox"/> Check final drive oil level	<input type="checkbox"/> Take engine oil sample
Every 500 Hours	
<input type="checkbox"/> Drain and refill engine oil and replace filter	<input type="checkbox"/> Take final drive oil sample
<input type="checkbox"/> Replace primary and final fuel filters	<input type="checkbox"/> Take hydrostatic transmission oil sample
<input type="checkbox"/> Replace auxiliary fuel filter	<input type="checkbox"/> Take diesel fuel sample
<input type="checkbox"/> Check battery water level; clean and tighten terminals	<input type="checkbox"/> Take hydraulic oil sample
<input type="checkbox"/> Change winch oil filter (if equipped)	<input type="checkbox"/> Take engine coolant sample
<input type="checkbox"/> Drain water and sediment from fuel tank	<input type="checkbox"/> Check blade shim adjustment
Every 1000 Hours	
<input type="checkbox"/> Check air intake hose	<input type="checkbox"/> Replace cab fresh air and recirculation air filters
<input type="checkbox"/> Drain and refill final drive oil	<input type="checkbox"/> Check track frame pivot shaft bushing oil level
<input type="checkbox"/> Drain and refill winch oil and replace filter (if equipped)	<input type="checkbox"/> Clean or replace winch hydraulic breather filter (if equipped)
<input type="checkbox"/> Check coolant condition	
Every 2000 Hours	
<input type="checkbox"/> Check and adjust engine valve lash	<input type="checkbox"/> Drain and refill hydrostatic transmission system oil and replace filter
<input type="checkbox"/> Clean engine crankcase ventilation tube	<input type="checkbox"/> Drain and refill hydraulic system oil and replace filter
<input type="checkbox"/> Replace fuel tank breather	
Every 6000 Hours	
<input type="checkbox"/> Drain and refill engine cooling system	