

REPLACEMENT PART GUIDE

4045HMK80 PowerTech M 4.5L OEM (4045 Tier 3) Engine



ALTERNATOR

[RE509080](#) (12V, 65A) (3120)



PRIMARY FUEL FILTER

[RE541922](#) (81B4)



OIL FILTER

[RE504836](#) (8843)

Replace 500 Hours of Operation or Every 12 Months.



FINAL FUEL FILTER

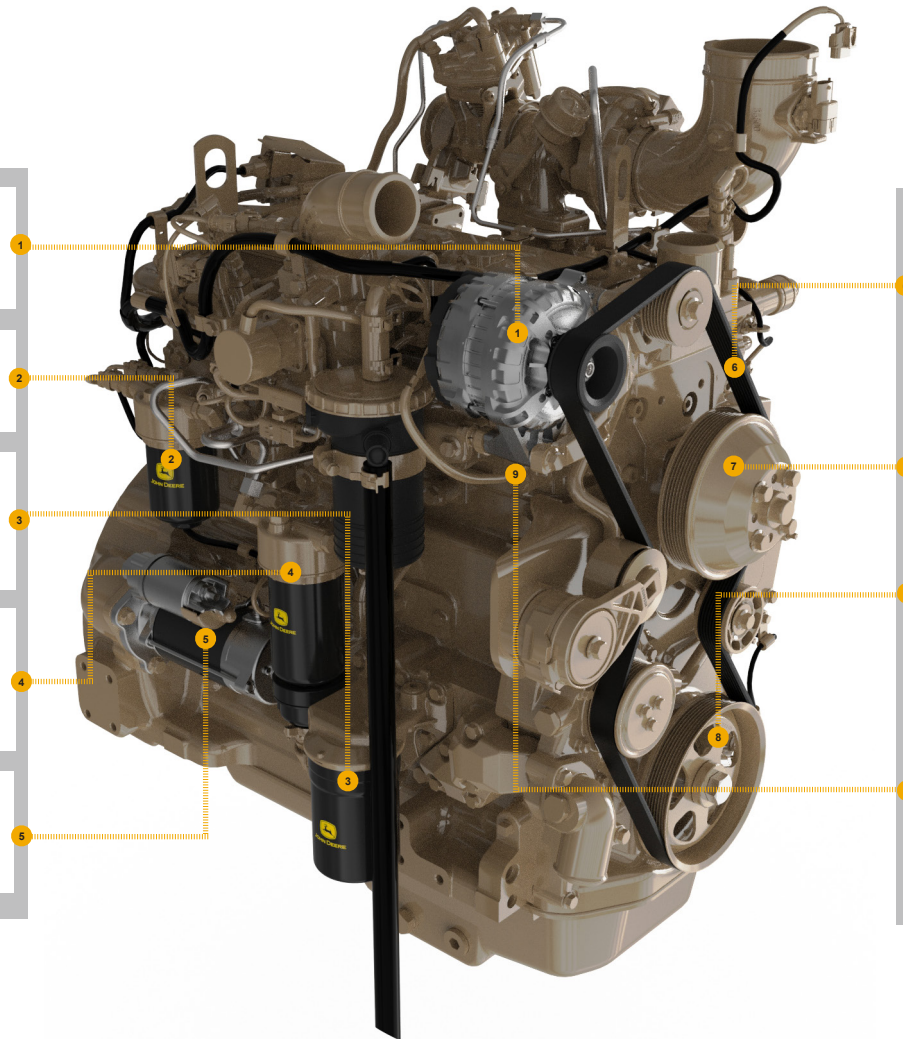
[RE522868](#) (35B2)

Replace 500 Hours of Operation or Every 12 Months.



STARTER MOTOR

[RE540301](#) (12V, 2.5KW) (3005)



FAN BELT

[DZ117268](#) (LGTH = 1530 mm) (24BK)

[DZ119416](#) (LGTH = 1595 mm) (2416)

[T428724](#) (LGTH = 1575 mm) (24KW)



FAN PULLEY

[R128658](#) (OD = 140 mm) (8636)



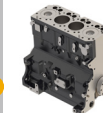
CRANKSHAFT PULLEY

[R505567](#) (OD = 167 mm) (1328)

SHORT BLOCK ASSEMBLY

[DZ109713](#)

Also Order Engine Gasket Kit, Dipstick Tube, Oil Pump, Cylinder Head Bolt Kit, Crank Wheel (If Applicable), (1) R121043 Valve, (1) R111137 Spring, And Parts From The Short Block Hardware Kit As Needed SUB FOR RE536158.



JOHN DEERE
Genuine Parts and Service

REPLACEMENT PART GUIDE

4045HMK80 PowerTech M 4.5L OEM (4045 Tier 3) Engine



STARTER MOTOR

[SE501401](#) (REMAN FOR [RE540301](#))
(12V, 2.5KW) (3005)



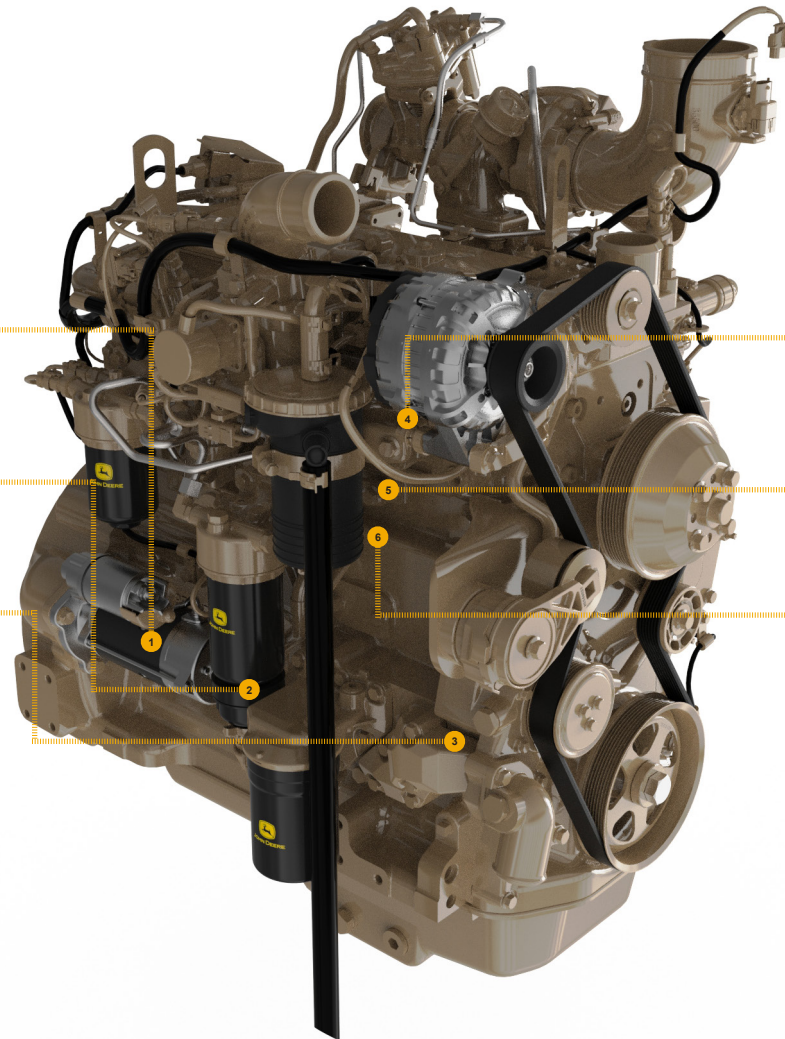
OIL PUMP

[SE501814](#) (REMAN FOR [DZ100057](#)) (5001)



WATER PUMP

[SE501610](#) (REMAN FOR [RE546917](#)) (4428)



COMPLETE BLOCK ASSEMBLY

[SE501795](#)



CYLINDER HEAD

[SE501806](#) (REMAN FOR [RE531088](#)) (5127)



CONNECTING RODS

[SE501096](#) (REMAN FOR [RE500002](#)) (4843)



JOHN DEERE
Genuine Parts and Service