

# FILTER OVERVIEW WITH SERVICE INTERVALS AND CAPACITIES

## 400R Self-Propelled Dry Spreader

### ENGINE

**DIESEL EXHAUST FLUID (DEF) DOSING UNIT FILTER**  
[DZ114640](#)

Replace after every 3500 hours or every three years of operation, whichever occurs first, and as required.



### ENGINE

**OIL FILTER -** [RE509672](#)

Replace after every 250 hours.



### ENGINE

**PRIMARY FUEL FILTER**  
[RE539465](#)

**FINAL FUEL FILTER**  
[DZ112918](#)

Replace after every 500 hours. (Always replace both filters at the same time).



### ENGINE

**SECONDARY FUEL FILTER**  
[DZ110558](#)

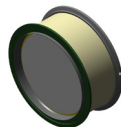
Replace after every 500 hours. (Always replace both filters at the same time).



### ENGINE

**DIESEL PARTICULATE FILTER (DPF)**  
[DZ115233](#)

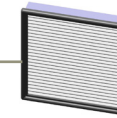
Replace as required.



### CAB

**RECIRCULATION AIR FILTER**  
[RE595871](#)

Replace every 500 hours or annually, whichever occurs first, and as required.



### CAB

**AIR FILTER (CAT 4)**  
[KK57033](#)

Replace every 500 hours or annually, whichever occurs first, and as required.



### ENGINE

**AIR FILTER**  
[AN207713](#)

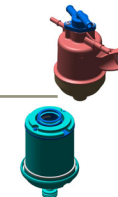
Replace as required.



### ENGINE

**DIESEL EXHAUST FLUID IN-LINE FILTER**  
[DZ118548](#)  
[DZ110513](#)

Replace Every 8500 Hours.



**JOHN DEERE**

Genuine Parts and Service

[https://www.deere.com/en\\_US/parts/parts\\_by\\_industry/ag/fmi/filter\\_maintenance\\_information.page](https://www.deere.com/en_US/parts/parts_by_industry/ag/fmi/filter_maintenance_information.page)

# CAPACITIES

## 400R Self-Propelled Dry Spreader

### CAPACITIES (Approximate):

#### Fuel Tank:

..... 566 L (149 gal)

#### Diesel Exhaust Fluid (DEF) Tank: John Deere™ Diesel Exhaust Fluid

..... 29.5 L (7.8 gal)

#### Engine Oil:

#### John Deere™ Plus-50™ II John Deere Break-In Plus™

..... 29.5 L (7.8 gal)

#### Cooling System with Heater: Cool-Gard™ II

..... 31.4 L (8.3 gal)

#### Crankcase including Filter: Plus-50™ II

..... 31 L (8.2 gal)

#### Hydraulic Reservoir: Torq-Gard Supreme™

..... 95.6 L (25.3 gal)

#### Hydraulic System:

#### John Deere - Torq-Gard™ 10W-30

..... 208 L (55 gal)

#### Final Drives (Each):

#### GL5 85W140 Gear Lube

..... 1.5 L (0.39 gal)

[Return to Filter Overview](#)

