

# Strip Tillage Drawn QUICK REFERENCE GUIDE

Drawn Machine Settings for R/RT Series Tractors			
SCV	Function	Flow	Detent Time
I	Implement Lift, Green	10	12 sec
II	Tilt and Fold, Blue	3	Constant
III	Cart Steering, Brown	5	Automatic
IV	AC/Meter Circuit, Black	4.5	Constant
V	Blower Fan 1, Purple	6	Constant
VI	Blower Fan 2 (if equipped)	6	Constant

Case drain is required for blower fan circuit.

\*Change SCV II flow rate to 10 for folding/unfolding.

Drawn Machine w/ Dual Coulters Settings for R/RT Series Tractors		
Regulator	Function	Pressure
Blue	Wheeled Row Unit Down Pressure	30
Black	Row Unit Down Pressure	25
Green	Row Cleaner Downforce	20
Yellow	Row Cleaner Upforce	0

Drawn Machine w/ Shanks Settings for R/RT Series Tractors		
Regulator	Function	Pressure
Blue	Wheeled Row Unit Down Pressure	10
Black	Row Unit Down Pressure	5
Green	Row Cleaner Downforce	20
Yellow	Row Cleaner Upforce	0

\*In wet conditions or when row cleaner downforce is greater than 20 psi, adding 5+ psi of upforce is recommended to keep row cleaner from digging.

Fertilizer Rates	Minimum Rate	Maximum Rate
<b>Potash:</b>		
Full Meter	100 lb/acre	300 lb/acre
Half Meter	50 lb/acre	150 lb/acre
<b>Urea:</b>		
Full Meter	100 lb/acre	210 lb/acre
Half Meter	40 lb/acre	120 lb/acre

## To Operate

- Line up for first pass.
- Confirm that the scales, fold, and AC are lit green on the switch box.
- Confirm the hydraulic settings.
  - SCV I: Tillage raise and lower.
  - SCV II: Detent for wing downforce.
  - SCV III: Detent for active cart steering (if installed).
  - SCV IV: Detent for air compressor and meter drive function.
  - SCV V: Detent for product fan.
- Turn off fan-float SCV V. Do not retract SCV lever to shut the fan off.
- Turn on the blockage monitor by pressing the power button (if equipped). Once on, press the gear button, then the power button.
- Set the minimum RPM for the transmission.

- Increase the throttle to MAX RPM.
- Turn on the master switch.
- Select track, turn on AutoTrac™ Guidance, then turn on Active Implement Guidance.
- Begin operating. Confirm application accuracy rate from bin weight and acre count.

## ↓ Unfold Sequence

- Remove the fold lock pins, then disengage the lift lock mechanism and tilt lock valve.
- Activate “Fold” switch and activate SCV II to unfold the wings fully.
- Deactivate “Fold” switch and activate the “Tilt” switch. Activate SCV II to fully tilt toolbar to the working position.
- Activate SCV I to lower the toolbar.

## ↑ Fold Sequence

- Activate SCV I and fully raise the toolbar.
- Activate the “Tilt” switch and activate SCV II to fully tilt the toolbar upward.
- Deactivate the “Tilt” switch and activate the “Fold” switch. Activate SCV II to fold the wings fully.
- Engage the fold lock pins, then engage the lift lock mechanism and tilt lock valve.



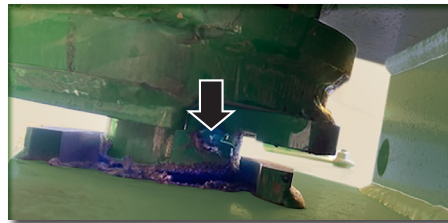
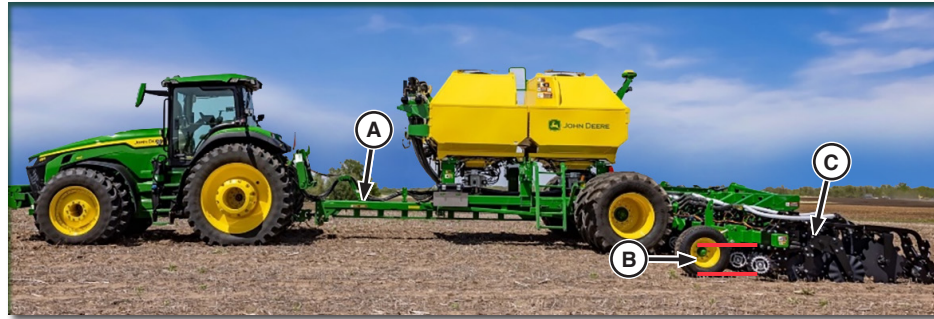
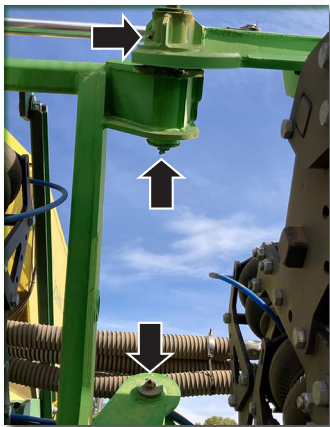
Ensure that all door/lid seals are installed and free of debris/product before operating. Optimal operating speed is 11—14 kph (7—9 mph).



# Strip Tillage Drawn QUICK REFERENCE GUIDE

## Daily Maintenance Points:

- Grease cart frame, meter roll bearings, tilt pins, and wing pins.



Slight uphill angle (A), toolbar working height 483—533 mm (19—21 in) (B), row unit parallel arms parallel to ground or slight downhill (C)

## Meter Calibration

### \* To get to catch test:

ISOBUS VT> Settings > Flow/Rate Sensor Setup > Catch Test

- Zero the tanks prior to loading fertilizer.
- Measure product density per tank and enter values.
- Prime each meter using Tank/Bin Charge tab.
- Remove collector bottom on the appropriate bin and install bag.
- Select Catch Test Calibration.
- Select 1 and 2 for meter sections.
- Enter 9—11 kg (20—25 lb) for desired weight.
- Run calibration at least twice.
- Ensure that seals are clean/free of debris and replace collector bottom.
- Repeat steps 4—8 for product bin 2.

- Dump air compressor drain valve.
- Apply adhesive grease to the hitch and cart frame.
- Inspect the meter housing, seals, and meter rolls.
- Check for hydraulic leaks.
- Grease row cleaners every 50 hrs.

**WARNING:**  
To avoid crushing hazard, ensure that the locks are engaged before transporting and working on the implement.



**Tilt Stop:** Clockwise rotation raises the back of the tool bar. Counterclockwise rotation lowers the back of the tool bar.

