

PRODUCT SUPPORT CATALOG



JOHN DEERE

2022 FALL

FEATURED INSIDE

Get your John Deere undercarriage under control by choosing from three different options that best suit your operation.

See pages 6-7

8-9 TK-Series Tooth System

15 Rubber Tracks

22-23 Reman Solutions

34-35 Commercial Job and Workshop Products

Order parts online anytime
at [JohnDeere.com/Parts](https://www.johndeere.com/Parts)



WORK NOW.



**JOHN DEERE
FINANCIAL**

PAY LATER.

Keep working and keep your cash.

Put what you need on PowerPlan™.

The construction industry is booming, and a PowerPlan™ account from John Deere Financial can help you take advantage of every opportunity for growth. With instant no-payment, no-interest* purchasing power on parts, service, attachments and technology, nothing will stand in the way of building your business.

**PARTS ★ SERVICE ★ ATTACHMENTS ★ RENTALS
PREVENTATIVE MAINTENANCE ★ TECHNOLOGY**

Open your PowerPlan account today at
JohnDeereFinancial.com/PowerPlan.

John Deere Hydraulic Oil 46 (zinc-free)

Hydraulic Oil 46 (zinc-free) is engineered and produced to meet the specific requirements of excavator hydraulic systems.

- Zinc-free technology reduces sludge and contamination
- Offers superior extreme temperature performance
- Drain intervals up to 5,000 hours*

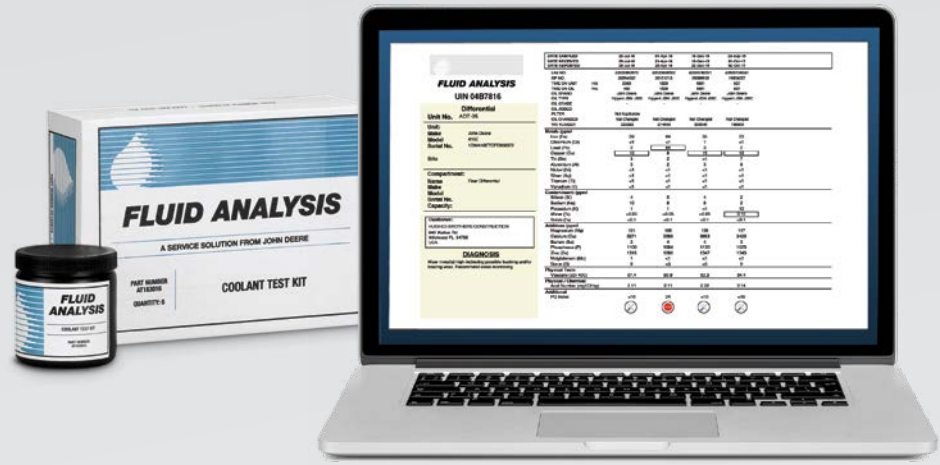
*See operator's manual for further details on oil selection and drain intervals.



Fluid Sampling

Remove the guesswork from machine maintenance and know what's going on inside your machine's major components before performance declines. The **John Deere Fluid Analysis program** provides extensive testing of engine, hydraulic, powertrain, cooling, and fuel systems:

- Monitors equipment condition and fluid integrity.
- Works in conjunction with John Deere Protect™, Extended Warranty, and ReLife programs.
- Extracts and submits fluid samples, records fluid and machine data, and reports results and recommendations.



Contact your dealer today to discuss how Fluid Analysis can benefit your operation – and your bottom line.

Table of Contents

- John Deere Financial 2
- John Deere Connected Support™ 4–5
- Undercarriage 6–7
- TK-Series Tooth System 8–9
- All-Makes RVJ Bucket Teeth 10
- All-Makes Bucket Teeth 11
- Cutting Edges 12–14
- Forestry Saw Teeth 14
- Rubber Tracks 15
- JAGZ™ 16
- Half-Arrow Blades 17
- Hydraulic Hoses 18
- John Deere Protect 19
- Powertrain ReLife Plus 20
- Certified Rebuild Centers 21
- Reman 22–23
- Oil, Lubricants, and Filters 24–25
- Coolants 26
- Diesel Exhaust Fluid and Equipment 27
- Fuel Additives 28
- Grease 29
- Towels and Chemicals 30
- Paint 31
- Batteries and Battery Accessories 32–33
- Commercial Job and Workshop Products 34–35

John Deere Connected Support™



When you buy John Deere equipment you expect reliability.

You should, because Nothing Runs like a Deere.

That's why John Deere equipment comes prepared from the factory with technology built in.

It senses potential issues and can alert you promptly — in the cab or anywhere you are.

You also know that when you're on the jobsite, the unexpected can happen.

When it does, you need a quick resolution.

Better yet, your dealer can receive alerts and connect to your equipment.

You know your dealer is always ready to keep you running — and running better.

WHEN YOU CONNECT YOUR MACHINE:

You Can

- Monitor alerts from the machine remotely
- Monitor engine hours and utilization
- View machine location and get driving directions to the jobsite
- Monitor fuel level and idle time

Your Dealer Can

- Monitor alerts coming from your machine
- Remotely connect to your machine for real-time diagnosis
- Leverage Expert Alerts from John Deere to address potential future downtime
- Perform software updates from the dealership

Most new John Deere machines come ready with five years of machine connectivity to enable these tools that you keep running.

Ask your dealer about John Deere Connected Support to learn more.

One of the most powerful reasons to choose John Deere.

Our remote machine-monitoring capability for tracking the health of machines in the field enables your dealer to respond more efficiently to critical issues that can result in costly downtime.

Our Machine Monitoring Center specialists use advanced telematics and alert-management tools to stay on top of potential issues. When necessary, they engage John Deere factory-trained technicians, who have the ability to read and clear diagnostic codes, record machine-performance data, and even update software — without ever visiting the machine in the field.

Typical response time is quick, and many times problems can be addressed before they cause downtime. When technicians do need to visit the jobsite, they often arrive with the correct repair parts already in hand.

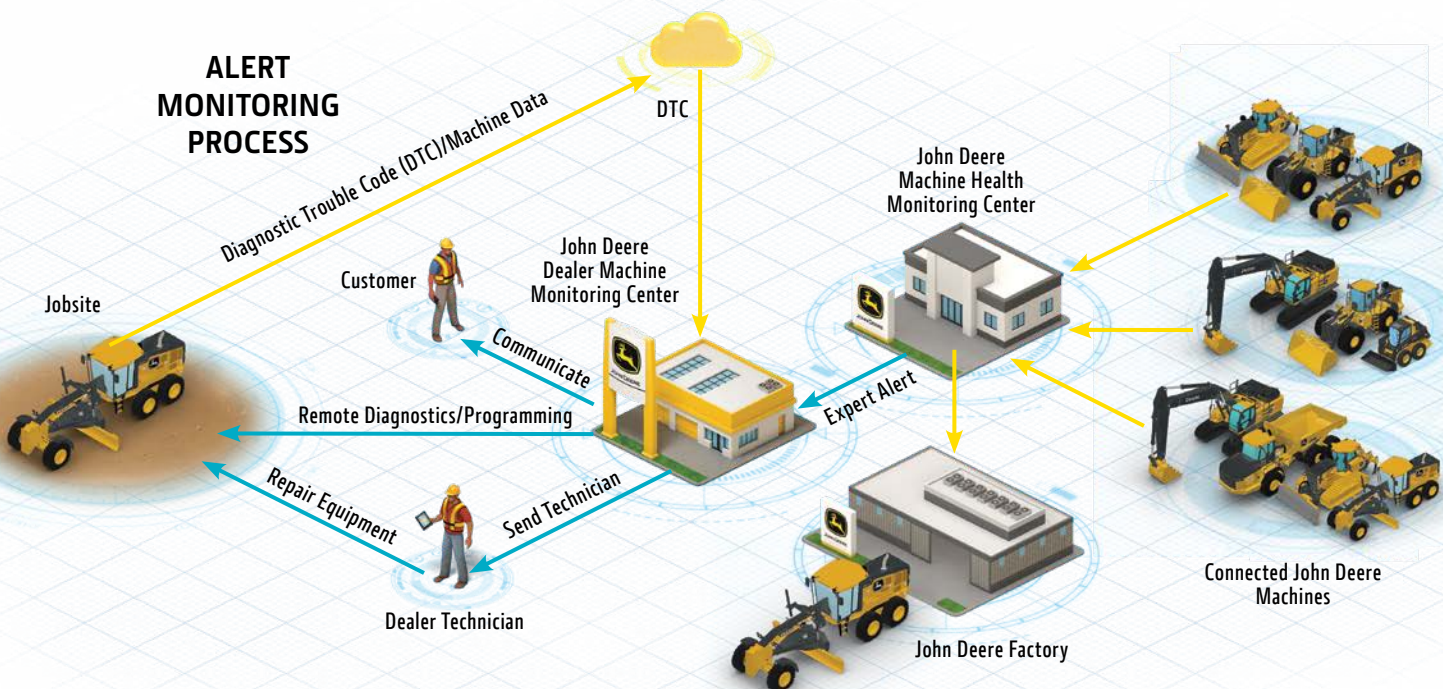


Looking at the big picture now can help us improve our service to you in the future

John Deere Machine Health Monitoring Center specialists develop solutions that enrich our monitoring services. They do this by analyzing accumulated machine data, identifying trends that warrant a closer look, and then developing new and improved preventative maintenance and repair protocols that we can leverage in the future.

So while we focus on addressing issues that may immediately impact you and your fleet, the Machine Health Monitoring Center keeps an eye on the big picture so we can repair machines faster and even help you avoid unexpected downtime altogether.

ALERT MONITORING PROCESS



John Deere Undercarriage

Tough undercarriages with longer and more even wear.

With rapid and unbalanced undercarriage wear eating up some 50 percent of the average contractor's maintenance budget, John Deere undercarriages are strong allies in the battle to keep uptime up and operating costs down.

The steel that goes into our undercarriages provides the kind of deep-hardened resiliency that goes directly to your bottom line. And that's why we say the value that we build into John Deere undercarriages is truly hardened to the core.

We offer three choices to cover your needs:

Heavy-Duty Undercarriage

All components are carefully matched in tolerance, strength, hardness, and wear limits, for optimum wear life.

Extended Life Undercarriage

This wear resistant system features the addition of the popular and exclusive SC-2™-coated bushings.

Maximum Life Undercarriage

The Maximum Life Undercarriage incorporates SC-2-coated bushings along with stronger seals and larger components compared to the Standard and Extended Life Undercarriage systems that already deliver longer and more balanced wear in most soil conditions.

Undercarriage selection

The chart below compares the three John Deere undercarriage choices relative to seven different attributes. Your John Deere dealer has the expertise to help you understand the characteristics of each undercarriage and choose the one that is right for your operating conditions and business needs.

	Standard	Extended Life	Maximum Life
	GOOD	BETTER	BEST
Purchase Price	■		
Operating Cost			■
Ride Comfort	■	■	■
Wear Life		■	■
Abrasion Resistance – SC-2		■	■
Impact Resistance – Larger Components			■
Varying Ground Conditions		■	■

Note: All factors are dependent on soil conditions and specific application. Consult your local John Deere dealer to choose the right undercarriage for your operation.

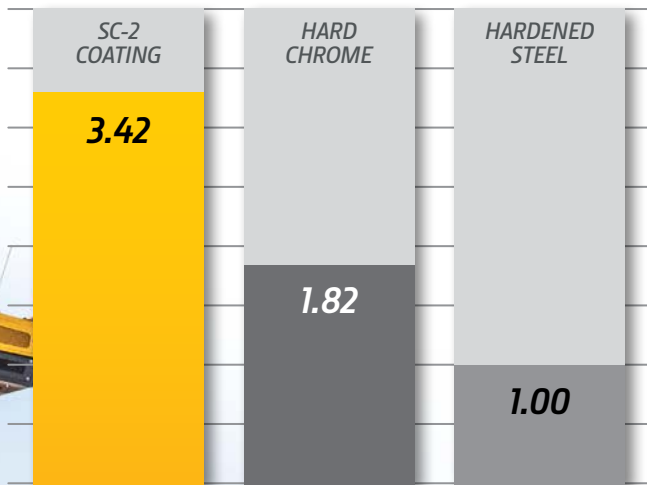





WARRANTY
Backed by a 3-year/
4,000-hour warranty.

SC-2 wear comparison

SC-2-coated bushings minimize service requirements because they deliver up to twice the life before you need to make a “turn decision.” In some cases, bushing turns may even be eliminated.



Standard bushing



Bushing with SC-2



Stands up to punishing tests

Track-chain assemblies were field-tested in sand. The photos above show that the standard bushing wore 32 percent, while the bushing with SC-2 coating had minimal wear.

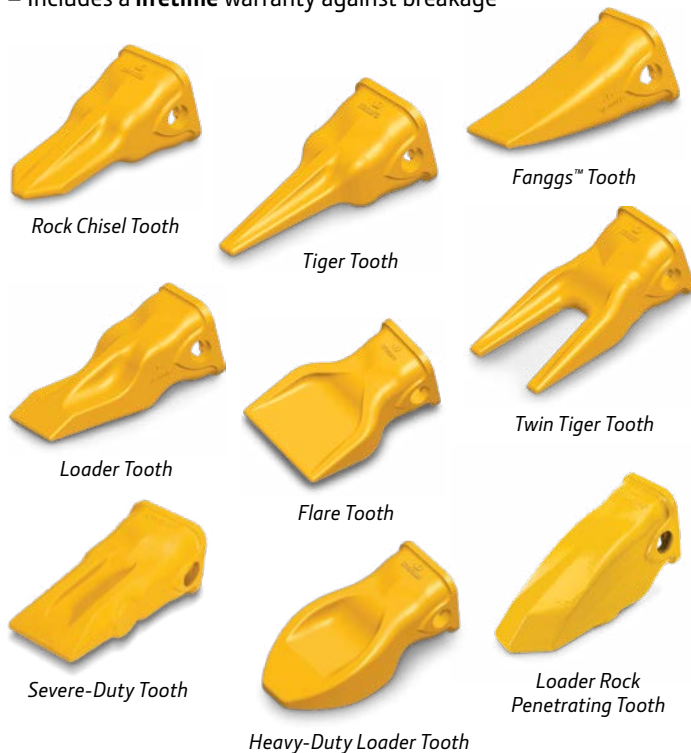


John Deere TK-Series Tooth System

Why it's better.

The TK-Series System is engineered to deliver maximum performance, quick and safe replacement, and superior tooth retention.

- Rubber locks are held captive when the tooth is retained for security and protection from direct impact
- Nearly a **70-percent consumption ratio**¹ means you are getting more for your money
- Over **50-percent-more usage** with heavy-duty TK-Series loader teeth²
- Includes a **lifetime** warranty against breakage

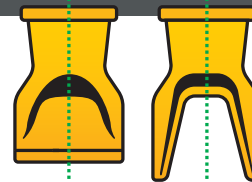
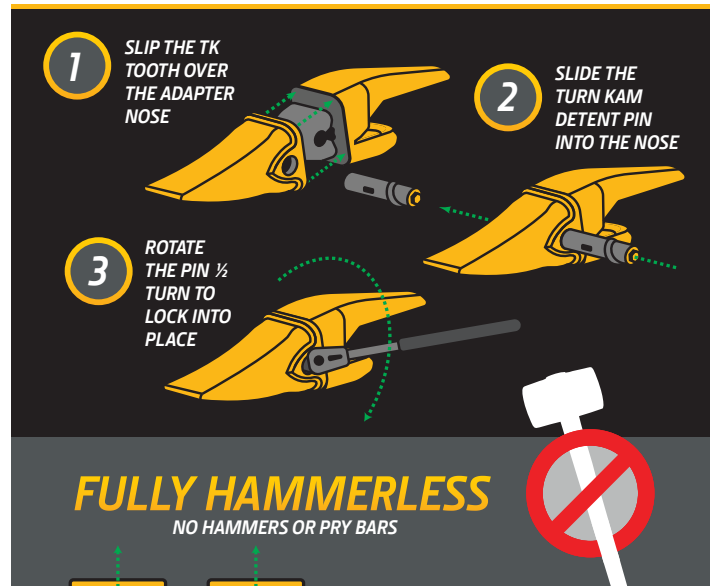


Note: TK-Series teeth installed on new John Deere equipment are painted yellow as shown. Aftermarket TK-Series teeth are black.

See your dealer for specific part numbers.

¹ Richmond, Virginia, field-test data from August 2012. A set of eight TK550LD teeth and eight TK550LDH teeth on a 90-metric-ton loader loading blasted granite was monitored and weighed at end of life. Data showed an average consumption ratio across all teeth for the LD set to be 67.18 percent, and 69.29 percent for the LDH set.

² Field-test data from October 2012 showed the TK550LDH (heavy-duty) teeth at end of life yielded 550 hours of production compared to an average of 254 hours for two sets of TK550LD (standard-duty) teeth tested on the same 90-metric-ton production loader in a blasted granite loading application.



SYMMETRICAL DESIGN
ALLOWS THE TEETH TO BE FLIPPED AND PINS TO BE RETAINED FROM EITHER SIDE

A NEARLY 70-PERCENT CONSUMPTION RATIO MEANS YOU ARE GETTING MORE FOR YOUR MONEY

70%





CONTROL IN HARSH CONDITIONS

Keep your rock bucket rocking in the nastiest of situations with the Loader Rock Penetrating Tooth (LDRP).

The LDRP has 30-percent more wear material than its Heavy-Duty Loader Tooth (LDH) equivalent, giving this tooth extra bite where it's needed. Intended for rock buckets in highly abrasive conditions that show severe wear on the top of the tooth, the LDRP takes a chomp out of tough jobs.



John Deere All-Makes RVJ Bucket Teeth

A new twist on old technology.

The RVJ Bucket Tooth System is engineered to deliver hammerless technology to existing Caterpillar J-Series adapters through a converter and helical pin design. The converter is secured between the existing competitive J-Series adapter and the RVJ tooth. The helical pin is placed in the tooth's nose, where it is rotated 180 deg. with a common socket wrench and tightly secured. Convert to a fully hammerless system without changing adapters!



See your dealer for
specific part numbers.

Convert to a fully hammerless system without changing adapters.

- 1 Insert converter into adapter.
- 2 Fit tooth over nose and converter.
- 3 Insert helical pin and rotate 180 deg. with socket wrench to engage lock.



John Deere All-Makes Bucket Teeth

John Deere "Original Line" Teeth

John Deere builds rugged replacement teeth and adapters for most brands of backhoes, excavators, loaders, scrapers, and graders. John Deere teeth are available in either split-washer or two-piece-pin configurations to make replacement of these critical wear parts as quick and cost efficient as possible.

Caterpillar Replacement Teeth

The oversized pocket characteristics of these teeth with the extended adapter nosepiece provide a nose fit between the tooth and adapter that results in strong impact resistance with a loose fit in the ramps. Cat style teeth use a horizontal pin and retainer.

H&L Replacement Teeth

H&L style teeth are designed for backhoes and excavators. They are available in a multitude of shapes offering superb performance and reliability in all digging conditions. H&L style teeth use a horizontal flex pin.

Hensley Replacement Teeth

The parabolic (dished-out) design creates a wedging and self-tightening fit. Most Hensley style teeth use a vertical roll pin, flex pin, or steel keeper, depending on size.

ESCO Helilok®/Vertalok® System

Teeth mount on both the Vertalok and Helilok adapters with a quarter turn and "butts ups" against the adapter nose to take thrust loads head-on. The helical threads and large stabilizing flats at the end of the nose deliver maximum resistance to severe breakout forces.

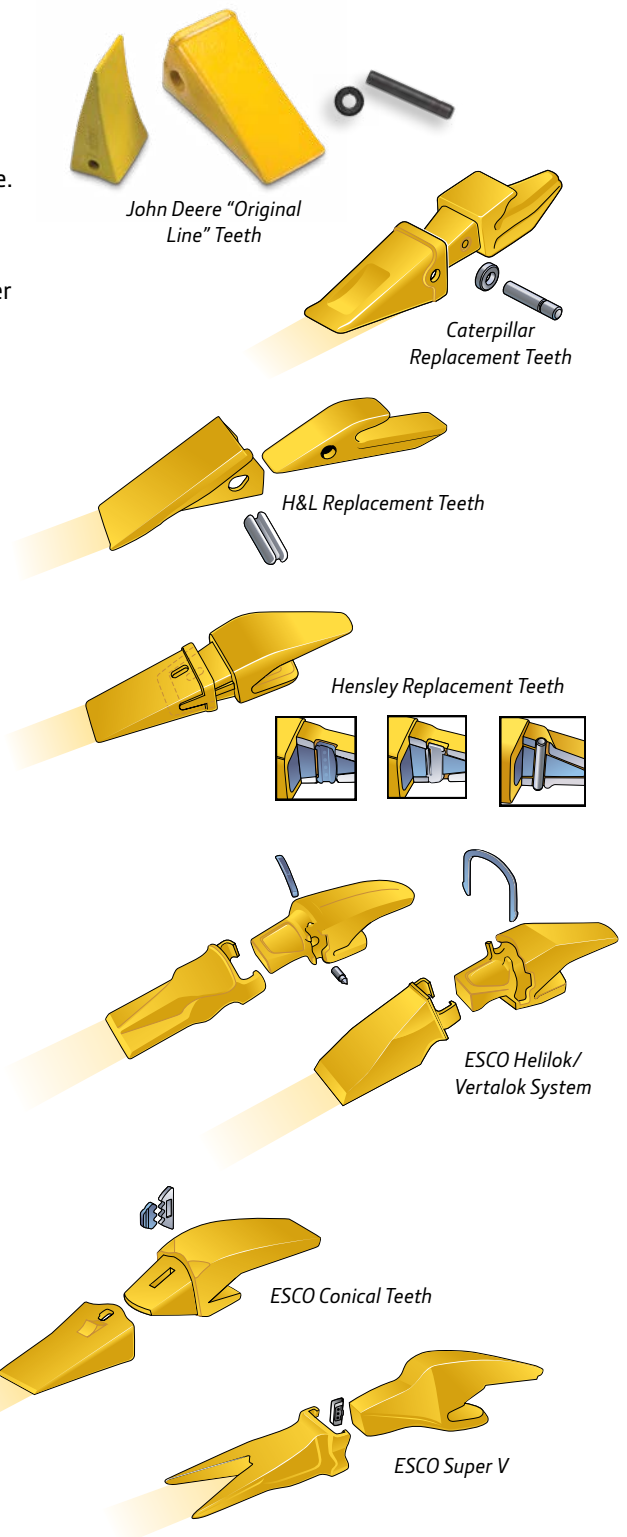
ESCO Conical Teeth

The "conical" design mating system between tooth and adapter creates self-tightening action. The design reduces tooth movement both vertically and horizontally. Conical teeth use a vertical pin and rubber lock.

ESCO Super V™

The Super V tooth twists a quarter turn onto the adapter and "butts up" against the adapter nose to match breakout forces more closely. The one-piece pin provides easier changeover and is reusable for 29 Series sizes and larger.

**John Deere meets your all-makes bucket teeth needs.
See your local John Deere dealer for a full listing of
available parts.**



John Deere Cutting Edges

Protect your investment!

John Deere is your one-stop solution for all your cutting-edge needs.

Our full line of cutting edges covers everything from a standard, economical carbon edge to specialty edges like our John Deere Jagz™ Interlocking Edge System. Talk with your dealer to review your specific application and find out which John Deere system is best for you.

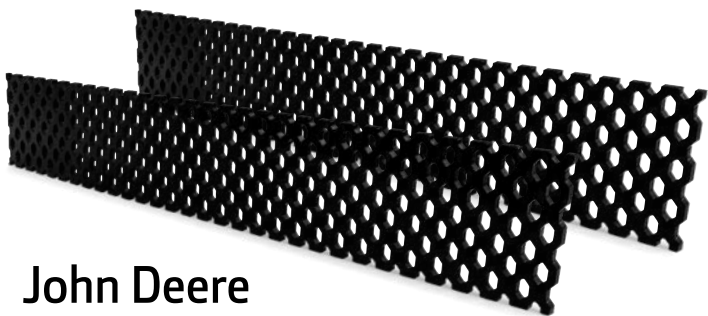


Carbon Edges

The standard for cutting edges, these edges are formed from a high carbon rolled steel, made harder by the addition of carbon.

Dura-Max Edges

Manufactured with thru-hardened 15B30 boron steel, which is significantly harder than the standard carbon edge. Dura-Max edges are made harder via a heat-treatment process in which the blades are heated to extreme temperatures and then quenched to reach maximum hardness levels.



John Deere Lattice Edge

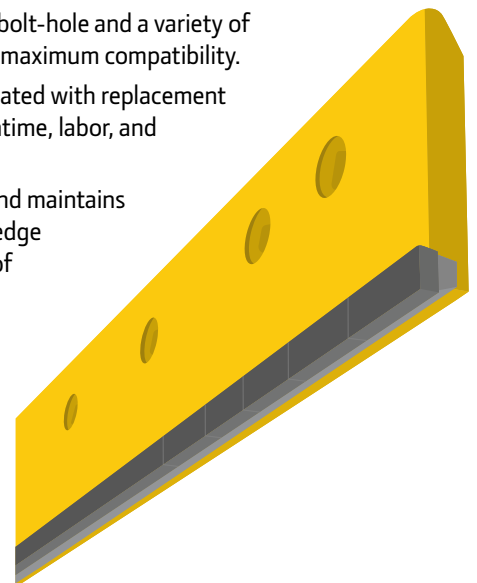
Aggressively cut into ice and snow with the John Deere Lattice Edge. This edge is designed to create a rough surface for salt or sand to collect onto the ice and snow. This cutting edge features a Lattice style design across the entire moldboard width and length to allow for full rotatability.

Dual Carbide Edge

The dual carbide edge features two tungsten carbide inserts specifically designed for high-abrasion and low-impact applications. First insert is formulated with our proprietary macrocrystalline carbide grade for toughness and impact resistance, and mounts on the front of the blade. Second insert is made from a wear-resistant carbide grade and mounts directly behind the first insert to resist wear caused by blade down pressure and abrasion.

Features, advantages, and benefits:

- Provides maximum wear resistance.
- Offers the longest-lasting blade life span in the industry.
- Exclusive, innovative blade design that outlasts imbedded carbide granule-style blades.
- Features a universal bolt-hole and a variety of available lengths for maximum compatibility.
- Reduces costs associated with replacement part inventory, downtime, labor, and overall operations.
- Resists “crowning” and maintains a straighter cutting edge throughout the life of the blade.





John Deere Stinger™ Scarifier-Style Grader Edges

John Deere Stinger grader edges deliver consistent, reliable performance in a wide range of applications.

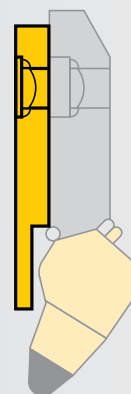
Stingers eliminate washboarding and potholes, with fewer passes than standard grader blades, as well as decrease the number of passes necessary to properly maintain a road surface. These tungsten-carbide-tipped cutting tools are stronger than steel and penetrate hard-packed, gravel, and frozen surfaces easily. Stinger replaceable, rotating, self-sharpening tools wear uniformly and maintain an even cutting height by enabling them to be rotated from position to position.

Stingers come in over a dozen tool styles and fit universally into three blade strengths for a variety of applications:

- **Standard duty** – ideal for light-use grading in average conditions
- **Heavy duty** – useful in most grading environments
- **Severe duty** – best for working in extreme elements

Cover blades

Wear-resistant steel cover blades are available for operating your scarifier system in extremely abrasive conditions or carrying heavy debris loads on the moldboard. These cover blades provide better protection for the blocks and welds, and easily attach through existing bolt-holes on the blade.



End protectors



End protectors are also available for working in rough conditions. The tough steel, heavy-duty designed end protection bits feature an exclusive combination of ductility and air-hardening steel.



John Deere Cutting Edges

Isolated Carbide Edges (I.C.E.™) with Carbide Overlay

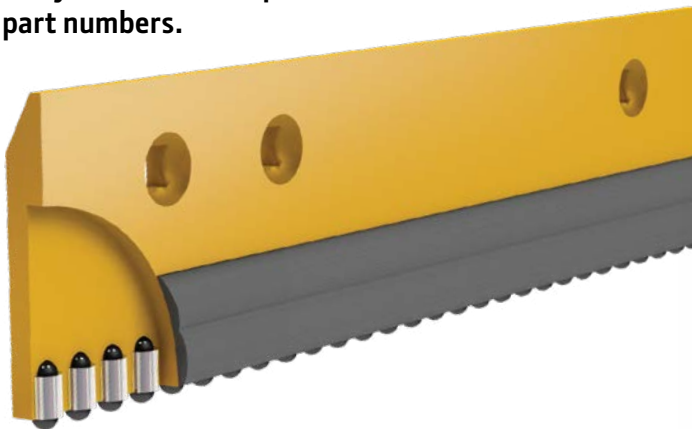
Severe road applications call for abrasion-resistant solutions.

I.C.E. blades with carbide overlay offer the latest application technology in one advanced blade for motor graders. Traditional blades wear prematurely, while I.C.E. blades withstand blade-edge breakage and damage in harsh snowy and icy conditions.

Features, advantages, and benefits:

- Combines durable, individually mounted bullet-shaped inserts protected with a layer of wear-resistant carbide granules imbedded in a tough, abrasion-resistant, steel-weld material in one blade
- Offers maximum blade strength and longevity even in the harshest of road applications
- Features the highest levels of combined blade wear, impact, and fracture resistance
- Performs effectively to remove snow on roads with embedded lane markers and rumble strips by effectively resisting carbide fractures
- Improves penetration versus traditional straight-edged designs

See your dealer for specific part numbers.



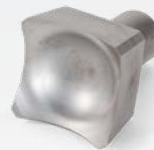
Forestry Saw Teeth

Look sharp on the job.

John Deere offers a full line of saw teeth and saw blades for wheeled and tracked feller bunchers.

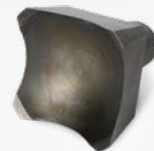
All products are engineered to improve cutting efficiency through design and tooth metallurgy, ensuring you stay sharp for even the toughest jobs.

John Deere's complete lineup of teeth and blades provides loggers unique options for every application. Each quality, high-performing tooth will get the job done while maintaining its cutting edge. Our John Deere Extended Life Saw Teeth deliver durable performance that will significantly reduce operating costs by prolonging teeth-cutting efficiency. No matter how demanding conditions get, your John Deere dealer can provide you with the right solution for saw teeth and saw blades.



Extended Life

- Additional hours of cutting efficiency in rocky applications
- Heat-treated to withstand more impact over longer periods of time
- Competitive cut and durability to hardened Beaver design



One-Piece Hardened Concave

- Rocky soil application
- Good sacrificial tooth for logging blocks with unknown content



One-Piece Carbide Beaver

- Abrasive material application
- Stays sharp longer in sandy soils
- Carbide steel and efficient cutting design

Bolts sold separately.

John Deere Rubber Tracks



THE RIGHT TRACKS ON THE RIGHT PATH

We've improved the roller-path life, steel-cord durability, and metal-core adhesive strength of our rubber tracks for compact track loaders over the previous version. That alone is reason enough to get work rolling the right way, but we'll sweeten the deal with a 10-percent discount for making the jump from aftermarket rubber tracks to John Deere rubber tracks.* This offer is only valid from May 3, 2022, to October 31, 2022, so don't wait to get tough and stay tough. **See your participating dealer for details.**

*Only available at participating dealer locations.
Dealer reference program number TS-F2.

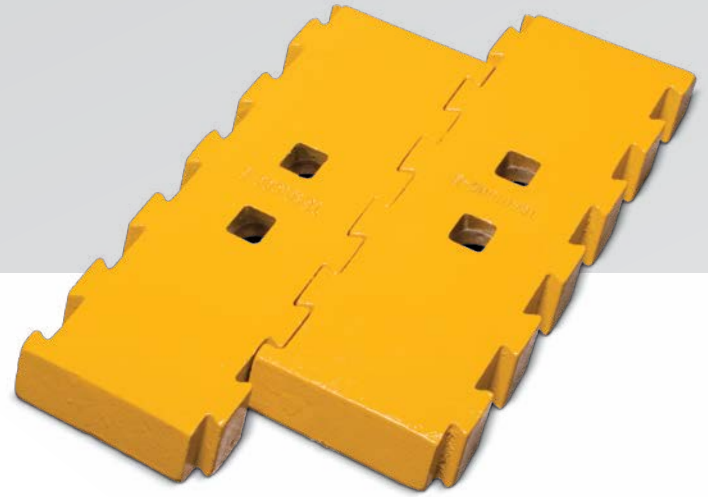
10% OFF

Through October 31, 2022.

See us for program details.

Dealers: Refer to Program Number TS-F2.

Production-Class Equipment Solutions



JAGZ™ Cutting Edges

JAGZ interlocking cutting edge systems provide an alternative to conventional, non-interchangeable cutting edges.

JAGZ utilize bolt-on edges common to many buckets and can be mounted in a staggered or straight pattern depending on your application. When mounted in a staggered pattern, you get increased penetration and better bucket fill. The straight pattern leaves a smoother working surface, making it perfect for loading. JAGZ also balance wear by swapping the more quickly worn outside edge with the less worn centers.

In addition, JAGZ maximize usable steel by allowing for up to 90-percent wear before replacement, compared to 50-percent usable steel on conventional bolt-on edges. This flexibility is what makes the JAGZ system stand out from the crowd.

JAGZ highlights:

- Guaranteed for life against breakage
- Easy to install and adjust, saving you time and money
- Self-sharpening edges wear from the bottom up, for increased wear
- Reversible, interchangeable pieces deliver more versatility
- Unique cutting angle gives better bucket fill
- Designed for fleet flexibility, including most competitive loaders
- Leaves a smoother work surface, reducing tire wear and increasing comfort



Easy-to-install JAGZ are guaranteed against breakage and fit any model or make of loader.

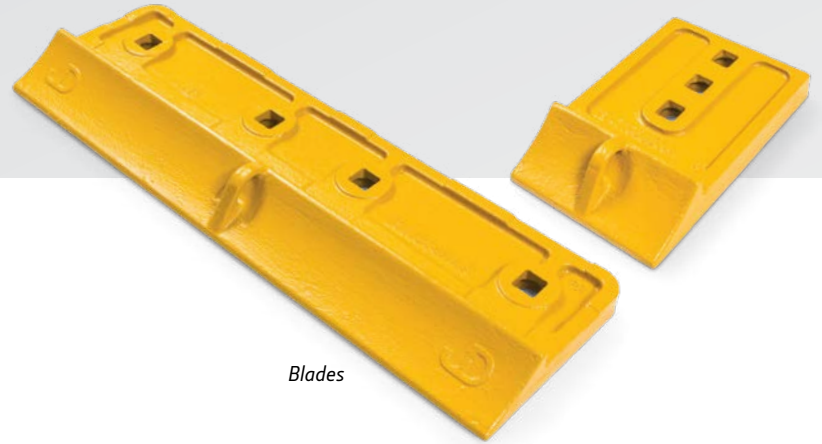


John Deere Half-Arrow Blades

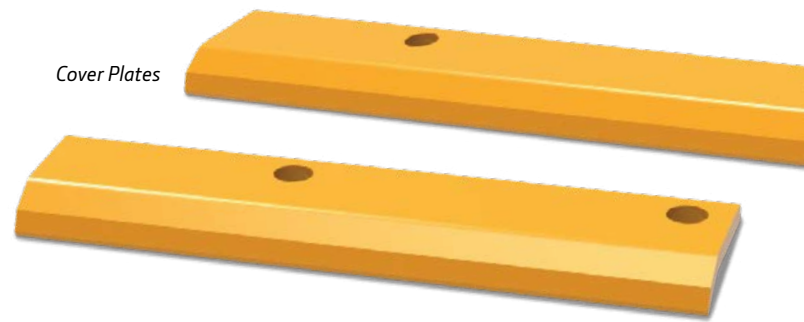
Meet your everyday job solution. Half-arrow designs offer the benefits of more material in high-wear areas, increased bucket capacity, and enhanced bucket penetration.

Maximum depth countersinking allows for optimum wear before the bolt head's failure. The sharpened nose design enables excellent penetration capability and enhanced material flow into the bucket. The combination of half-arrow blades and base-edge covers protects the base edge while optimizing the flow of material into and out of the bucket. This unique design puts more wear material where it is needed most, on the underside of the bucket where abrasion is highest, making it an excellent solution for production-class applications.

Half-arrow edges and segments are built to perform using HighSpec Alloy X14 steel for excellent wear characteristics and superior impact resistance. Half-arrow edges are used to replace the standard double-bevel design commonly used on loaders



Blades



Cover Plates

when no tooth and adapter options are installed. Segments are placed between loader teeth to protect the base edge of the bucket. The half-arrow design offers enhanced protection for the edge and bevel. Combining half-arrow-shaped segments or blades with base-edge covers completely protects the base edge from abrasion.



Half-arrow blades are available for the L-Series Loaders: 644L, 644L Hybrid, 724L, 744L, 824L, and 844L Loaders, and 844L Aggregate Handler.

Hydraulic Hoses

John Deere hose assemblies built to OEM specifications.

Ask your dealer about hoses for any brand of equipment.



HOSES IN MINUTES

John Deere Orange V-Plugs

Orange V-Plugs are the perfect solution for quickly and reliably plugging hose and tube ends, ports, and other openings to prevent the leakage of messy fluids. With each plug covering a range of Inside Diameters (IDs), challenges encountered while performing maintenance or repair on fluid-conveyance systems are met swiftly and easily, and with your uptime in mind.



Use Orange V-Plugs to:

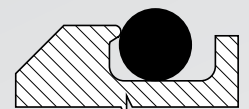
- Help prevent environmental contamination and unsafe work environments
- Stop the infiltration of dust and other ambient contaminants into sensitive systems
- Maintain a well-equipped shop tool chest and/or service vehicle toolbox

John Deere SecuRing™ Seal

SecuRing seal replaces the industry standard round cross-section o-rings currently used in face seal connections.

SecuRing eliminates the gap between different shapes in the sealing area.

- Improves seal retention in the groove.
- Reduces the chance for pinched or missed seals.
- Lightly coated for proper seating in the groove.
- Compatible with half-dovetail and straight sided ORFS grooves.
- Available for the following Hose Fitting Dash Sizes (-4, -6, -8, -10, -12, -16, -20, and -24).



Round O-ring



SecuRing Seal

JOHN DEERE PROTECT™

PROTECTED FOR THE LONG RUN

Choose a service plan that's right for you.¹ Purchase with an extended warranty and experience these powerful benefits with a dealer-serviced **John Deere Protect Service Plan**.

Prefer to conduct your own maintenance? Go with a customer-serviced **John Deere Protect Parts & Fluids Plan** and get the same benefits while having your own technicians take care of the service and labor.



CONTACT US FOR MORE INFORMATION OR VISIT:

DEERE.COM/LONGRUN

¹ John Deere Protect™ Service Plans are available for eligible models of construction equipment at participating John Deere dealers in the United States.

Number of Scheduled Maintenance Events and parts required varies based on specific model, in accordance with the operator's manual.

Excludes Compact Construction Equipment, Scraper Systems, and Forestry Equipment.

For complete details, see your local, participating John Deere dealer.

John Deere Powertrain ReLife Plus



REBUILT **AND** **RUNNING.**
NOW THAT'S A PLUS.

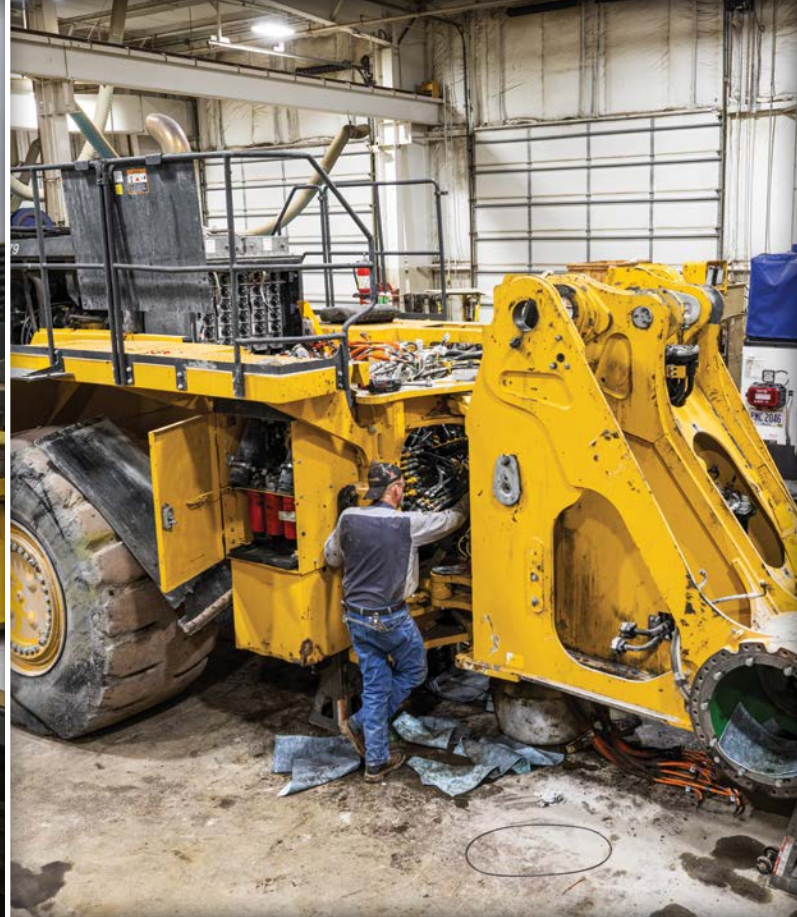
John Deere Powertrain ReLife Plus **MACHINE-REBUILD PROGRAM**

*Extend the life of your machine with John Deere Powertrain ReLife Plus.
Design a comprehensive and flexible machine-rebuild solution that
protects your bottom line — and keeps you moving forward.*

- + QUALITY PRODUCTS**
- + SUPERIOR SUPPORT**
- + THE POWER OF CHOICE**

Visit [JohnDeere.com/ReLife](https://www.johndeere.com/ReLife) to learn how your dealer can maximize your machine's uptime.

Introducing John Deere Certified Rebuild Centers



Machine Solutions Near You and Within Your Budget

When you need an equipment rebuild tailored to your machine, your location, and your bottom line — John Deere Certified Rebuild Centers are dealer-designated facilities designed to deliver:

- The **EXPERTISE** of trained technicians proficient in repair versus replacement, to maximize machine-relife value
- Assessments and rebuild work focused on **CONSISTENCY** of processes, to provide a **QUALITY** solution you can count on
- Multiple rebuild **OPTIONS** that meet your needs and schedule, to minimize disruption to your operation

JOHN DEERE
CERTIFIED
REBUILD CENTER

Contact your local John Deere dealer to learn how Certified Rebuild Centers can help you keep downtime under control.



Extended Warranty for Reman Engines

Whether you have dirt to push, trucks to load, or mountains to move, your engine is the heart of your machine. Having the peace of mind that you can depend on, your engine allows you to focus on running your operation.



JOHN DEERE
REMAN

The Extended Warranty program for John Deere Reman engines gives you that peace of mind at an affordable price. When you select a John Deere Reman replacement engine, you can now select from the following extended warranty options:

- 2yr/2,000hr
- 2yr/3,000hr
- 2yr/4,000hr*
- 2yr/5,000hr*
- 2yr/6,000hr*
- 3yr/2,000hr
- 3yr/3,000hr
- 3yr/4,000hr*
- 3yr/5,000hr*
- 3yr/6,000hr*

See your John Deere dealer today for details on this program.



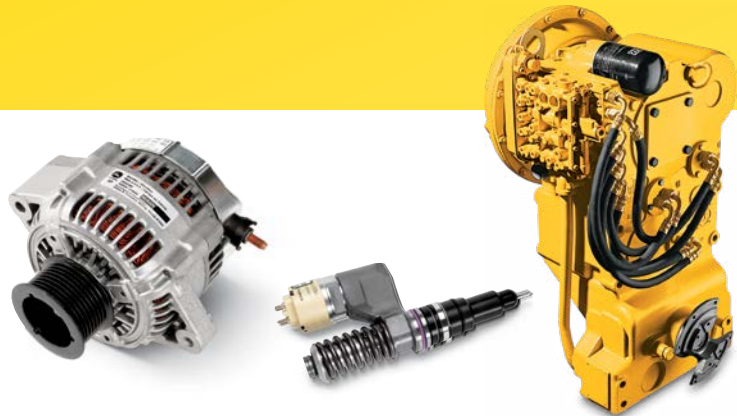
*Not available for Scraper Tractor applications.



JOHN DEERE
REMAN

Reman solutions.

When time is money and reliability is critical, you need a repair solution you can count on. John Deere Reman provides a full line of remanufactured components which minimize downtime and deliver the same levels of performance and durability as a new component at 60 to 75 percent of the price of new.



	Articulated Dump Trucks	Backhoes	Crawler Dozers	Crawler Loaders	Excavators	4WD Loaders	Motor Graders	Scraper Tractors	Skid Steers
Engines	X	X	X	X	X	X	X	X	X
Fuel Injection	X	X	X	X	X	X	X	X	X
Transmissions	X	X				X	X	X	
Axles / Final Drives	X	X	X	X	X	X	X	X	
Hydraulic Pumps	X	X	X	X	X	X	X	X	
Hydrostatic Pumps			X	X					
Hydrostatic Motors			X	X	X				X
Rotary Manifolds					X				
Starters and Alternators	X	X	X	X	X	X	X	X	X
Electronic Controllers	X	X	X	X	X	X	X	X	X
A/C Compressors	X	X	X	X	X	X	X	X	X
Turbochargers	X	X	X	X	X	X	X	X	X
Internal Engine Components	X	X	X	X	X	X	X	X	X

NEW! More Remanufactured Engine options recently added!

Reman Complete Engines

Reman Part No.	Engine Designation Code	Machine Models	Machine Type	New Part No.
SE502844	4045HDW56	444K	Loader	PE11257
RM100179	4045HDW58	444K	Loader	PE11458
SE502837	4045HT074	450J	Crawler Dozer	PE11261
SE502831	4045HT070	550K and 650K	Crawler Dozer	PE11260
RM100180	4045HT066	130G	Excavator	PE11365
RM100181	4045HT068	160G LC and 180 G LC	Excavator	PE11397
RM100182	4045HT063	310SK TC, 410K, and 410K TC	Backhoe Loader	PE11285
RM100183	4045HT073	210K, 310K, 310SK, 310SK TC, 410K, and 410K TC	Backhoe Loader	PE11286
RM100186	4045HT072	310K EP, 310L EP, 210K EP, and 210L EP	Backhoe Loader	PE11283
RM100107	6068HDW85	644K Hybrid	Loader	PE12249
RM100110	6068HT079	710K	Backhoe Loader	PE11294
RM100111	6068HT086	210G and 210GLC	Excavator	PE11262
RM100122	6068HT089	655K	Crawler Loader	PE11259
RM100123	6068HTJ90	1070E and 1170E	Wheeled Harvester	DD22260
RM100124	6068HTJ91	1110E, 1210E, and 1510E	Forwarder	DD22388



Reman Complete Block Assemblies

Reman Part No.	Engine Designation Code	Model
RM100171	4045HT069, 4045HDW56, 4045HDW58, and 4045HT068	605K, 444K, 160G LC, and 180G LC
SE502829	4045HT066, 4045HT070, and 4045HFL92	130G, 550K, 650K, and 344K
RM100176	4045HT063 and 4045HT073	210K, 310K, 310SK, 310SK TC, 410K, and 410K TC
RM100172	4045HT072	310K EP, 310L EP, 210K EP, and 210L EP

John Deere Oil and Lubricants

Plus-50™ II API CK-4/SN Engine Oil

The best John Deere oil, Plus-50 II SAE 15W-40, 10W-30, 5W-40, and 0W-40, is made with a unique additive system that offers excellent protection from deposits and wear. It exceeds API service classification CK-4/SN, and is available in sizes from quarts to totes. It's excellent for all diesel engines!

Part No.	Description	Size
TY26674	Plus-50 II, 15W-40	1 U.S. qt. (946 ml)
TY26673	Plus-50 II, 15W-40	1 U.S. gal. (3.78 L)
TY26675	Plus-50 II, 15W-40	2½ U.S. gal. (9.5 L)
TY26679	Plus-50 II, 15W-40	5 U.S. gal. (18.9 L)
TY26677	Plus-50 II, 15W-40	30 U.S. gal. (113 L)
TY26678	Plus-50 II, 15W-40	55 U.S. gal. (208 L)
TY26991	Plus-50 II, 15W-40	275 U.S. gal. (1041 L) tote
TY26669	Plus-50 II, 10W-30	1 U.S. qt. (946 ml)
TY26668	Plus-50 II, 10W-30	1 U.S. gal. (3.78 L)
TY26671	Plus-50 II, 10W-30	5 U.S. gal. (18.9 L)
TY26670	Plus-50 II, 10W-30	55 U.S. gal. (208 L)
TY27734	Plus-50 II, 10W-30	275 U.S. gal. (1041 L) tote
TY27740	Plus-50 II Synthetic, 5W-40	1 U.S. gal. (3.78 L)
TY27741	Plus-50 II Synthetic, 5W-40	5 U.S. gal. (18.9 L)
TY27742	Plus-50 II Synthetic, 5W-40	55 U.S. gal. (208 L)
TY26665	Plus-50 II Synthetic, 0W-40	1 U.S. qt. (946 ml)
TY26664	Plus-50 II Synthetic, 0W-40	1 U.S. gal. (3.78 L)
TY26667	Plus-50 II Synthetic, 0W-40	5 U.S. gal. (18.9 L)
TY26666	Plus-50 II Synthetic, 0W-40	55 U.S. gal. (208 L)
TY27354	Plus-50 II Synthetic, 0W-40	275 U.S. gal. (1041 L) tote



Contact your local dealer today
about bulk oil availability!

Hydrau™ and Hydrau™ XR Hydraulic Oils

Hydrau and Hydrau XR are premium hydraulic oils specifically designed for use in hydraulic and hydrostatic systems of construction and forestry equipment.

- Hydrau offers all-season capability in ambient temperatures of –25 deg. C to +50 deg. C (–13 deg. F to +122 deg. F)
- Hydrau XR is a synthetic hydraulic oil that offers all-season capability in ambient temperatures of –40 deg. C to +40 deg. C (–40 deg. F to +104 deg. F)
- Superior oxidation and thermal stability and protect against rust and corrosion
- Extended change intervals

Part No.	Description	Size
TY27366	Hydrau	2½ U.S. gal. (9.5L)
TY27367	Hydrau	5 U.S. gal. (18.9 L)
TY27368	Hydrau	55 U.S. gal. (208 L)
TY27369	Hydrau	275 U.S. gal. (1041 L)
TY27318	Hydrau XR	5 U.S. gal. (18.9 L)
TY27319	Hydrau XR	55 U.S. gal. (208 L)
TY27735	Hydrau XR	275 U.S. gal. (1041 L) tote



Hydraulic Oil 46 (zinc-free)

Hydraulic Oil 46 (zinc-free) is engineered and produced to meet the specific requirements of excavator hydraulic systems. The zinc-free technology reduces sludge and contamination while offering superior extreme temperature performance. Drain intervals are up to 5,000 hours.* Hydraulic Oil 46 is available in multiple package sizes to meet your needs.

Part No.	Description	Size
TY27845	Hydraulic Oil 46	5 U.S. gal. (18.9 L)
TY27846	Hydraulic Oil 46	55 U.S. gal. (208 L)
TY27847	Hydraulic Oil 46	275 U.S. gal. (1041 L) tote



*See operator's manual for further details on oil selection and drain intervals.

Genuine John Deere Filters

Insist on filters made to the original, correct specifications. Reliable and dependable genuine John Deere parts boost uptime and productivity while lowering your daily operating cost.

Trap microscopic particles.

Our premium John Deere filters are purposely built to protect and extend the life of your machines.

They're made to exact specifications and will fit John Deere equipment and other all-makes applications, including some cars and trucks.



- 1 Heavy-duty canister
- 2 Spring designed for construction applications
- 3 Heavy-duty one-piece metal end caps
- 4 Poly-blend filter element
- 5 Crimped spiral-center tube
- 6 Nut plate with rolled threads
- 7 Rubber gaskets specifically designed for each application

Stay on the jobsite longer with John Deere filters and Plus-50™ II engine oil.

Get great protection with fewer oil changes when you pair John Deere oil filters with premium Plus-50 II engine oil. Specifically designed by John Deere engineers for John Deere equipment, our maintenance products defend your machine from harsh conditions and wear. John Deere Plus-50 II engine oil and John Deere oil filters – it's a winning combination to keep your equipment working longer.



Coolants

Antifreeze/Coolant

Cool-Gard™ II high-performance, long-life, heavy-duty formula

- Formulated for up to 6-year/6,000-hour* life in cooling systems of diesel and gas engines
- Nitrite free
- Supports advanced engine technology
- Protects against corrosion and deposits
- Extends water-pump life and prevents liner cavitation

Cool-Gard II PG

- Less toxic to animals and wildlife than conventional ethylene glycol-based coolants



Part No.	Description	Freeze Protection	Size
Cool-Gard II:			
TY26573	Concentrate	Variable; down to -62°F (-52°C)	1 U.S. gal. (3.78 L)
TY26574	Concentrate	Variable; down to -62°F (-52°C)	55 U.S. gal. (208 L)
TY26575	50/50 Pre-mixed	Down to -34°F (-37°C)	1 U.S. gal. (3.78 L)
TY26576	50/50 Pre-mixed	Down to -34°F (-37°C)	2½ U.S. gal. (9.5 L)
TY26577	50/50 Pre-mixed	Down to -34°F (-37°C)	55 U.S. gal. (208 L)
TY26578	50/50 Pre-mixed	Down to -34°F (-37°C)	330 U.S. gal. (1249 L) tote
Cool-Gard II PG:			
TY26968	60/40 Pre-mixed	Down to -52°F (-47°C)	1 U.S. gal. (3.78 L)
TY26969	60/40 Pre-mixed	Down to -52°F (-47°C)	55 U.S. gal. (208 L)
TY26970	60/40 Pre-mixed	Down to -52°F (-47°C)	330 U.S. gal. (1249 L) tote

*Rating applies when complete cooling system flush is performed prior to use.

Coolant Test Kit

Protecting engines from liner cavitation and rust is as important as checking their oil condition. The Coolant Test Kit will provide details to indicate if the fluid is protecting the engine.

Part No.	Description
TY26873	Coolant Test Kit
TY26348	Pump
AT321211	Sampling Valves



Diesel Exhaust Fluid (DEF)

John Deere DEF ensures you can be confident you are getting a high-quality product that will provide unsurpassed performance while protecting your equipment investment. Simplify your operation by integrating John Deere DEF into your fluid-maintenance routine.

- Compatible with all engines using selective catalytic reduction (SCR) aftertreatment technology
- Nontoxic, nonhazardous, and nonflammable
- Dispense nozzle included with each 2½-gallon jug
- Drums outfitted with 2-in. bung opening for direct-pump or closed-system dispensing valve and drop-tube installation
- Totes include integrated closed-system dispensing valve and drop tube
- Forklift tubes beneath tote cage for ease in handling
- ISO 22241 compliant for DEF-handling procedures
- American Petroleum Institute (API) certified



Typical Usage Rates*

John Deere Engine	Rate
4.5 L	0.05 gal./hr. (0.2 L/hr.)
6.8 L	0.1 gal./hr. (0.4 L/hr.)
9.0 L	0.2 gal./hr. (0.8 L/hr.)
13.5 L	0.3 gal./hr. (1.1 L/hr.)

*DEF usage rates shown are based on an average for typical engine duty cycles. DEF consumption is primarily a function of engine speed and load. Actual results may vary.

Container Sizes

Part No.	Size
SWDEF025PK (case)	2½ U.S. gal. (9.46 L)
SWDEF025 (pallet)	2½ U.S. gal. (9.46 L)
SWDEF055	55 U.S. gal. (208 L)
SWDEF330	330 U.S. gal. (1249 L)
SWDEFB150	Bulk (150 U.S. gal.)
SWDEFB3000	Bulk (3,000 U.S. gal.)

Equipment



Dispensing Pumps

- DEF pump with 20-ft. (6.1 m) hose
- Poly, manual or stainless steel, auto-shutoff nozzle
- Closed-system dispense coupler
- Hookup ready
- Valve and dip tube ordered separately

Part No.	Description
SW12VDEFP	12V Pump, Poly
SW110VDEFP	110V Pump, Poly
SW12VDEFSS	12V Pump, SS
SW110VDEFSS	110V Pump, SS



Portable Dispensing Unit

- Durable polyethylene molded tank with protective hard cover
- Removable 12-volt, self-priming transfer pump
- 20-ft. (6.1 m) hose
- Poly manual nozzle
- Delivers 7–10 U.S. gpm (26–37 Lpm)

Part No.	Description
SWDEFPDU65P	65 U.S. gal. (246 L) Tank
SWDEFPDU65M	DEF Metal Box with Poly PDU, 65 U.S. gal. (246 L)
SWDEFPDU65MH	Heated DEF Metal Box with Poly PDU, 65 U.S. gal. (246 L)

Additional equipment options available.

HANDLING & STORAGE

- Store out of extreme temperatures
- Freeze point: –11°C (12°F)
- Keep out of direct sunlight – Solar heating may raise the temperature of the fluid, which could cause the urea to break down, making it less effective
- Store in sealed containers – Make sure the tamper-proof seal stays intact on totes and drums
- Purchase DEF in quantities that will be consumed within 12 months

John Deere Fuel Additives



Diesel Fuel Conditioner

Cleans and maintains fuel system for optimal power and performance. Prevents injector sticking and includes a lubricity improver to help combat poor fuel quality and increased cetane number, for faster, smoother fuel-efficient starting.

Cold Weather Fuel Conditioner

All the same features as Diesel Fuel Conditioner with the added benefits of:

- Offers lower cold filter plugging point (CFPP) and pour point, which increases engine operability
- Contains a deicer to prevent fuel lines from freezing

Keep Clean

Specifically formulated for high-pressure diesel fuel systems. Powerful detergent prevents and limits formation of deposits that cause injector sticking, misfire, rough riding, power loss, or hard starting conditions.

Emergency Thaw

Dissolves gelled diesel fuel and melts ice in the fuel filter caused by freezing conditions, restoring fuel flow to the engine.

FQS 1.5 Microbicide

Antimicrobial fuel preservation additive recommended for control of bacteria and fungi in fuel system.

Grease

Specially formulated to meet the lubricating needs of tough off- and on-road conditions.

Choose from these grease types to meet your specific needs:

Multi-purpose grease types:

BEST

Multi-Purpose SD Polyurea Grease and Extreme-Duty Synthetic Grease: For high temperatures and extreme pressures. Best used for U-joints, bearings, and other grease points requiring severe-duty grease.

BETTER

Multi-Purpose HD Lithium Complex: Use for bearings, U-joints, and other grease points requiring heavy-duty grease where a lithium or lithium complex grease is recommended.

Part No.	Description	Size
TY6341	Multi-Purpose SD Polyurea Grease	14-oz. cartridge
TY24421	Multi-Purpose SD Polyurea Grease	35-lb. pail
TY24422	Multi-Purpose SD Polyurea Grease	120-lb. keg
TY24416	Multi-Purpose HD Lithium Complex Grease	14-oz. cartridge
TY24417	Multi-Purpose HD Lithium Complex Grease	35-lb. pail
TY24418	Multi-Purpose HD Lithium Complex Grease	120-lb. keg
TY25744	Multi-Purpose Extreme-Duty Synthetic Grease	14-oz. cartridge

Special-purpose grease types:

BEST

Calcium Sulfonate 5% Moly Grease: For high temperature and extreme pressure. Protects against corrosion, and stays in place in wet conditions. For use in pins, bushings, and heavy-duty shock loads or continuous sliding contact. Moly grease is not recommended for bearing applications.

BETTER

Heavy-Duty 3% Moly Grease: For those special applications including construction, mining, and heavy industrial equipment. For use in pins, bushings, and ball joints, and shock load and continuous sliding contact.

Part No.	Description	Size
TY27373	Special-Purpose Calcium Sulfonate with 5% Moly	15-oz. cartridge
TY27372	Special-Purpose Calcium Sulfonate with 5% Moly	35-lb. pail
TY6333	Special-Purpose HD Moly Grease	14-oz. cartridge
TY22017	Special-Purpose HD Moly Grease	35-lb. pail
TY24502	Special-Purpose HD Moly Grease	120-lb. keg



Towels and Chemicals

Shop Towels and Absorbents

Start out clean. Toss when done.

Maybe you think that old shop rag of yours is doing the trick, but look at it — it's already dirty. Start fresh each time with John Deere shop towels.

Part No.	Description
DRC4223	Shop Towels, 200 Count, Box
DRC4221	Shop Towels, 200 Count, Bucket
DRC4222	Shop Towels, 200 Count, Bucket Refill
DRC4601	Shop Towels, 56 Count, Single Roll
DRC4602	Shop Towels, 56 Count, Three Pack
ABS2860	Absorbent Pads, 100 Count, 15 in. x 19 in.
ABS2861	Absorbent Roll, 28.5 in. x 150 ft., Perforated to 15 in. x 19 in. Sheets



Cleaners, Chemicals, and Lubricants

John Deere has the product you need, the quality and reliability you demand, and the prices you'll like!

Part No.	Description
RE556468	Starting Fluid
TY25684	CLASSIC Glass Cleaner
TY26101*	Brake & Parts Cleaner
TY26350	Chain and Cable Lubricant, Aerosol
TY26352	All-Purpose Cleaner
TY26353	Penetrating Oil
TY26355*	Carburetor and Choke Cleaner
TY26357	Engine Cleaner
TY26632	Electronic Contact Cleaner

John Deere Hand Cleaner:

TY26066	General Purpose Hand Cleaner with Pumice, 16 oz.
TY26067	General Purpose Hand Cleaner with Pumice, 1 gal.

*Part number not available in all areas. See dealer for options.



Paint

Protect your most valuable assets with John Deere paint.



Only from your John Deere dealer.

Your construction and forestry equipment represents a large investment. And you want it to last for years to come. So protect your most valuable assets today with the best paint in the business. John Deere paint.

Only genuine John Deere paint delivers the long-lasting, all-weather finish that shields your heavy-duty machinery from damaging UV rays, rust, and corrosion. Or any other harsh conditions Mother Nature may throw at you.

Pick up a can now at your local John Deere dealer. Better yet... make it two cans!

Batteries



StrongBox™ Original Equipment

Advanced, maintenance-free technology perfect for heavy- and light-duty farm, ranch, construction, utility, and lawn and garden equipment. Maintenance-free Original Equipment batteries are designed and tested for high heat and intense vibration in off-road conditions.

Tested in John Deere equipment by our engineers to meet the demanding machine specifications of your equipment.

John Deere Factory Tested to ensure batteries withstand rigorous off-road and harsh conditions.

Faster starts and power flow efficiencies by an intentional radial plate design.

Increased durability through a positive punched-grid design which prevents corrosion and electrical shorts.

Extended life created by small grid windows to improve active material retention.

Withstands vibration and prolongs life with a heavy-duty polypropylene case and cover, and with anchored plates in most commercial grade batteries.

Maintenance-free — no need to add water during normal service for customer convenience.



StrongBox™ Original Equipment Batteries

Our premium StrongBox Original Equipment battery line fits all makes of heavy-duty equipment used on construction sites. You can't beat StrongBox for quality and value!

Part No.	BCI	CCA
TY25879B	31	950
TY23020B	4D	1400
TY21741B	30H	650
TY26782B	D4	1150
TY21764B	24	550
TY24381B	4DLT	1000
TY25803B	31	760
TY21754B	40	1050

Backed by the John Deere Warranty.



StrongBox™ Standard-Duty Batteries

Our Standard-Duty battery line is a reliable and economical alternative to the premium StrongBox line. StrongBox Standard-Duty batteries are available for a variety of construction equipment applications.

Part No.	BCI	CCA
TY27796B	31	925
TY27829B	4DLT	860
TY27795B	31T	925



StrongBox™ Truck/SUV Batteries

StrongBox Truck/SUV batteries are available in a variety of sizes and will fit most automotive models. See your local dealer to find the battery that fits your vehicle needs.

Part No.	BCI	CCA
Ford		
TY24932B	65	850
Chevy/GMC		
TY27473B	48	730
TY24937B	78DT	800
Dodge Ram		
TY24937B	78DT	800
TY27804B	94R/H7	790
Toyota/Nissan		
TY24394B	24F	710
TY27799B	27F	700

Backed by the John Deere Warranty.

Battery Accessories



Booster Cables

TY26215

John Deere offers 2-gauge and 4-gauge Booster Cables in a variety of service options: Extra Heavy-Duty Professional, Commercial, Heavy-Duty Professional, and Heavy-Duty Commercial.

NOCO® MAX 6250A Lithium Jump Starter



A-GB500

- Jump-start 12- or 24-volt large agriculture, construction, and forestry equipment
- Jump start up to Class 8+ engines
- High-intensity 2,200 lumen work light
- Provides 12-volt accessory output to power air compressors, inverters, etc.
- Two built-in USB charge ports for on-the-go power
- Comes with an over the shoulder carrying case



Battery Cleaner and Terminal Corrosion Preventer

Help your battery reduce voltage leakage and surface acid with John Deere Battery Cleaner, and avoid corrosion deposits with Terminal Corrosion Preventer.

Part No.	Description
Battery Cleaner and Terminal Corrosion Preventer	
TY25767	Battery Cleaner (15 oz.)
TY25766	Terminal Corrosion Preventer (10 oz.)
Booster Cables	
2-gauge and 4-gauge 100% Copper Conduits	
TY26217	Booster Cable, Extra Heavy-Duty, 20-ft., 2-ga.
TY26215	Booster Cable, Commercial Service, 16-ft., 4-ga.
TY26216	Booster Cable, Commercial Service, 20-ft., 4-ga.
2-gauge and 4-gauge Copper Clad	
TY27301	Booster Cable, Heavy-Duty Professional, 20-ft., 2-ga. w/ Bag
TY27302	Booster Cable, Heavy-Duty Commercial, 20-ft., 4-ga. w/ Bag
Lithium Jump Starter	
A-GB500	NOCO® MAX 6250A Lithium Jump Starter

Commercial Job and Workshop Products

From air compressors, pressure washers, and portable generators, to the products shown here, your local dealer has the commercial job and workshop products you need to get the job done.

56-in. Tool Hutch and Cabinet

Heavy-duty, powder-coated steel construction makes the John Deere tool hutch and cabinet one of the most popular tool storage units on the market today. Raise and release drawer fronts keep drawers closed and secure when moving.



Part No.	Description
CC-5624H-Y	56-in. Top Hutch with Shelf
CC-5624CB-Y	56-in. Cabinet with 10 Drawers; 1,950-lb. Load Capacity with 1¼-in. Black-Diamond-Tread Work-Surface 24-in. Depth



36-in. Road Box

The 36-in., 5-drawer John Deere road box is available in a black powder-coat finish and is the perfect solution for keeping your tools organized when you are on the move. Its secured keyed locking system with over-molded keys and the reinforced drop-front security panel with gasket closure protect your tools from weather and theft. The 16-gauge cradle provides extra reinforcement for day-to-day usage on and off the worksite.

Part No.	Description
AC-3615RB-B	36-in. Road Box with 5 Drawers; Black



36-in. Triangle Truckboxes

The unique design of the triangle truckboxes keeps your tools, whether metric or SAE, in place and organized when the lid is secured and you are transporting them in the back of your pickup or John Deere Gator™. These distinctive toolboxes allow you to see your entire tool inventory at a glance. Available in three sizes, either with a durable black or construction yellow powder-coat finish.

Part No.	Description
CC-3617TB-Y	36-in. Triangle Toolbox; Yellow Powder-Coat Texture Finish
AC-3617TB-B	36-in. Triangle Toolbox; Black Powder-Coat Texture Finish

Diesel powered products.

Diesel Air Compressor

The 30-gal. tank of this Diesel Air Compressor gives you the convenience and capability to run large air tools in the most remote locations.

- Two-stage air compressor
- 9.1-hp Kohler electric-start engine with glow plug
- 29.0 CFM @ 175 PSI
- Powder-coated ASME-coded 30-gal. receiver tank
- Battery and cables not included

Part No.	Description
CC2-30KDS	9.1-hp Kohler Diesel Engine, 29.0 CFM @ 175 PSI

Diesel Compressorator™

The 30-gal. tank of this Diesel Compressorator gives you the convenience and capability to run air and electrical power tools in the most remote locations. Save space, save money with this combination unit.

- Two-stage air compressor
- 3,000-watt rated off-load
- 9.1-hp Kohler electric-start engine with glow plug
- 15.7 CFM @ 175 PSI
- Powder-coated ASME-coded 30-gal. receiver tank
- Battery and cables not included
- Stationary truck mount kit, used when installing stationary unit to the truck bed

Part No.	Description
CC2-CG35KD	9.1-hp Kohler Diesel Engine, 15.7 CFM @ 175 PSI, 3,000 watts

Diesel Generator

Built with high-quality generator components and powered by a Kohler engine, this diesel portable generator costs less to operate than other generators.

- 6,000 max. watts
- 9.1-hp Kohler electric-start engine
- 2.6 U.S. gal. fuel tank
- 6.8-hour run-time @ full load
- Battery included
- Optional wheel kit available — AW-5740-0020

Part No.	Description
CC-G6000KD	9.1-hp Kohler Diesel Engine, 6,000 watts





MAKE THE MOVE TO THE **MyFinancial App** FROM JOHN DEERE FINANCIAL

Run your account your way. The new MyFinancial app lets you tap into all your John Deere Financial account information — all in one place.



Simple: Manage your account on any device, anytime, and anywhere with one app.



Smart: One app gives you instant access to all our digital account management tools. View statements, purchase summaries, and payment information, plus get account notifications and more — all in real time.



Secure: Advanced data security and privacy features are built in to give you safe access to all your account information.



It's easy to get started. Download the MyFinancial app today!



JOHN DEERE
FINANCIAL