

CONSTRUCTION EQUIPMENT FLEET



JOHN DEERE



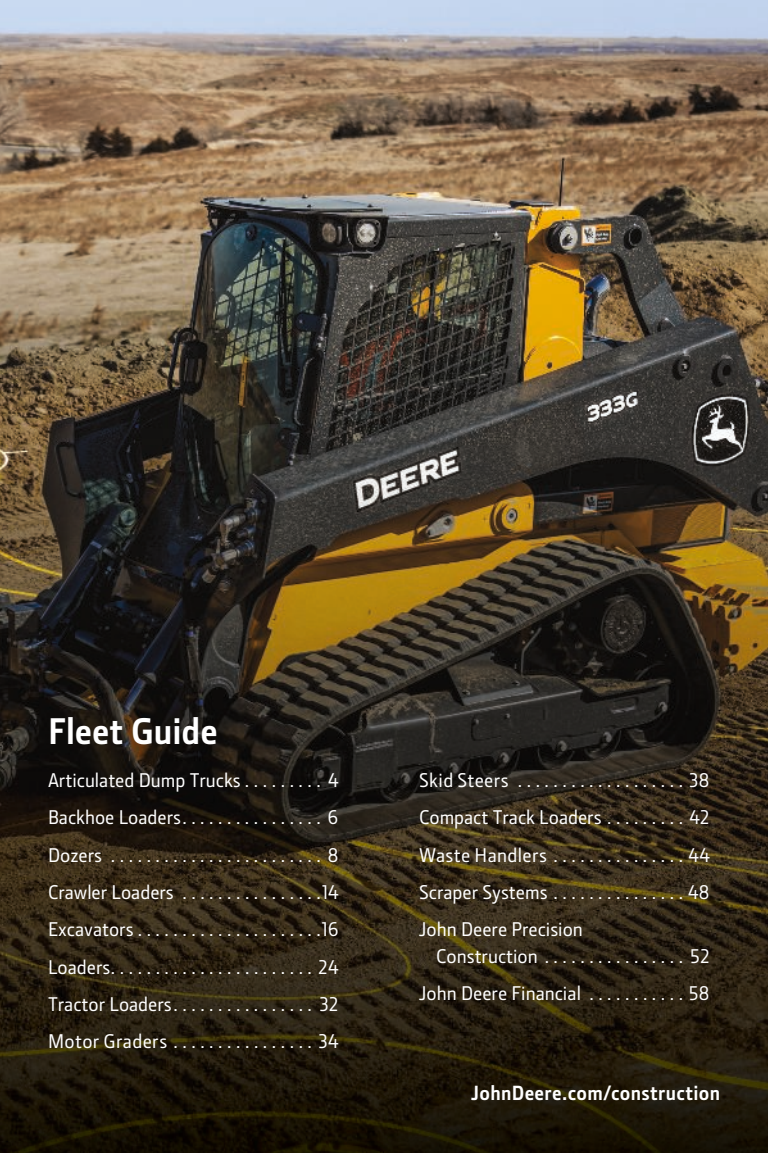
SOLVING TOMORROW'S CHALLENGES TODAY

At John Deere, our technology solutions are the result of what you've helped us learn. With your expert input, we've developed a wide range of innovative tools that let every machine in your fleet work smarter, together.

Flexible grade-management solutions from 2D or 3D Grade Guidance to fully integrated SmartGrade™ for 3D control, and on the widest range of machines in the industry — from excavators, dozers, motor graders, and compact track loaders — help eliminate rework.

Cutting-edge automation features on motor graders, SmartWeigh™ for wheel loaders, and performance tiering models including the top-of-the-line X-Tier help attract and retain skilled workers. Machine monitoring and connected support minimize downtime and enable informed decision making, for increased operational efficiency.

Whatever you're up against, we have the intelligent solutions you need to get the job done now and well into the future.



Fleet Guide

Articulated Dump Trucks	4	Skid Steers	38
Backhoe Loaders	6	Compact Track Loaders	42
Dozers	8	Waste Handlers	44
Crawler Loaders	14	Scraper Systems	48
Excavators	16	John Deere Precision Construction	52
Loaders	24	John Deere Financial	58
Tractor Loaders	32		
Motor Graders	34		



Hardworking and easygoing.

Our P-Tier Articulated Dump Trucks are purpose built to make hefty hauls while smoothing the ride. Productivity boosters include automatic dump control, a quiet pressurized cab featuring onboard diagnostics, and three drive modes including fuel-efficient Eco mode. Innovative options like onboard payload weighing, high-mounted LED lights, and tire-pressure monitoring help ease the routine. And ground-level serviceability comes in pretty handy, too.

JohnDeere.com/adts



260 P-Tier Articulated Dump Truck

- 239 kW (321 net hp) at 1,900 rpm
- Operating weight: 22 494 kg (49,591 lb.) empty / 46 686 kg (102,925 lb.) loaded
- Heaped capacity: 15.0 m³ (19.6 cu. yd.) at 2-to-1 ISO 6483 ratio
- Rated payload: 24 192 kg (53,334 lb.)



310 P-Tier Articulated Dump Truck

- 264 kW (354 net hp) at 1,900 rpm
- Operating weight: 22 847 kg (50,369 lb.) empty / 50 972 kg (112,374 lb.) loaded
- Heaped capacity: 17.5 m³ (22.9 cu. yd.) at 2-to-1 ISO 6483 ratio
- Rated payload: 28 125 kg (62,005 lb.)



410 P-Tier Articulated Dump Truck

- 329 kW (441 net hp) at 1,700 rpm
- Operating weight: 31 400 kg (69,225 lb.) empty / 68 666 kg (151,382 lb.) loaded
- Heaped capacity: 22.9 m³ (30.0 cu. yd.) at 2-to-1 ISO 6483 ratio
- Rated payload: 37 266 kg (82,157 lb.)



460 P-Tier Articulated Dump Truck

- 359 kW (481 net hp) at 1,700 rpm
- Operating weight: 31 700 kg (69,886 lb.) empty / 73 520 kg (162,084 lb.) loaded
- Heaped capacity: 25.2 m³ (32.9 cu. yd.) at 2-to-1 ISO 6483 ratio
- Rated payload: 41 820 kg (92,197 lb.)



310 G-Tier Backhoe

- 52 kW (69 net hp) at 2,100 rpm
- Operating weight: 6308 kg (13,907 lb.)
- Digging depth: 4.16 m (13 ft. 8 in.)
- Loader breakout force: 42.5 kN (9,564 lb.)
- Loader lift capacity, full height: 2998 kg (6,610 lb.)
- Loader bucket size range: 0.77–0.96 m³ (1.00–1.25 cu. yd.)
- Backhoe bucket size range: 305–610 mm (12–24 in.)



310 P-Tier Backhoe

- 75 kW (100 net hp) at 1,600 rpm
- Operating weight: 6904 kg (15,221 lb.)
- Digging depth: 4.30 m (14 ft. 1 in.)
- Loader breakout force: 42.3 kN (9,512 lb.)
- Loader lift capacity, full height: 2995 kg (6,602 lb.)
- Loader bucket size range: 0.77–0.96 m³ (1.00–1.25 cu. yd.)
- Backhoe bucket size range: 305–610 mm (12–24 in.)



320 P-Tier Backhoe

- 84 kW (113 net hp) at 1,900 rpm
- Operating weight: 7146 kg (15,754 lb.) / 7375 kg (16,571 lb.) w/ Heavy-Lift (HL) option
- Digging depth: 4.35 m (14 ft. 3 in.) / 4.59 m (15 ft. 1 in.) w/ HL option
- Loader breakout force: 46.9 kN (10,541 lb.) / 47.1 kN (10,598 lb.) w/ HL option
- Loader lift capacity, full height: 3352 kg (7,390 lb.) / 3286 kg (7,244 lb.) w/ HL option
- Loader bucket size range: 0.86–1.00 m³ (1.12–1.31 cu. yd.)
- Backhoe bucket size range: 305–610 mm (12–24 in.)

Exceed your expectations.

When you need a backhoe loader that typically outperforms the competition, add a John Deere to your fleet. The range of control choices and machine configurations includes 320, 410, and 710 P-Tier models with lift mode that delivers additional craning capacity of up to 15 percent and pressure-compensated load-sensing hydraulics to optimize trenching productivity. New 320 P-Tier Heavy-Lift option increases lifting capacities and breakout forces up to 25 percent. The versatile 310 P-Tier and value-leading, rental-friendly 310 G-Tier round out the standout lineup.

JohnDeere.com/backhoes



410 P-Tier Backhoe

- 87 kW (116 net hp) at 1,900 rpm
- Operating weight: 7975 kg (17,582 lb.)
- Digging depth: 4.85 m (15 ft. 11 in.)
- Loader breakout force: 46.1 kN (10,361 lb.)
- Loader lift capacity, full height: 3160 kg (6,967 lb.)
- Loader bucket size range: 1.00–1.15 m³ (1.31–1.50 cu. yd.)
- Backhoe bucket size range: 305–610 mm (12–24 in.)



710 P-Tier Backhoe

- 110 kW (148 net hp) at 2,240 rpm
- Operating weight: 11 698 kg (25,790 lb.)
- Digging depth: 5.26 m (17 ft. 3 in.)
- Loader breakout force: 73.6 kN (16,539 lb.)
- Loader lift capacity, full height: 4475 kg (9,866 lb.)
- Loader bucket size range: 1.00–1.43 m³ (1.31–1.87 cu. yd.)
- Backhoe bucket size range: 610–914 mm (24–36 in.)



Build on a solid foundation.

Success in the construction industry is built on more than moving material. Your dozer needs to set the standard for capability, control, and productivity. Our redesigned 450, 550, and 650 P-Tier models feature spacious, quiet cabs and options that elevate operator comfort. Adjustable hydraulic and transmission settings deliver responsive control configurable to individual operators. Lowered hoodlines improve forward visibility to the jobsite ahead. And dealer-supported grade-control solutions help lay the groundwork for the future of your operation.

JohnDeere.com/dozers



450 P-Tier Dozer

- 53 kW (71 net hp) at 2,000 rpm
- Operating weight: 8081–8634 kg (17,816–19,035 lb.)
- Track on ground: 2433 mm (96 in.)
- Blade width range: 2464–3150 mm (97–124 in.)
- Undercarriage configurations: Standard and LGP
- Add versatility with brush protection, winch, or ripper



550 P-Tier Dozer

- 69 kW (92 net hp) at 2,000 rpm
- Operating weight: 8552–9124 kg (18,853–20,115 lb.)
- Track on ground: 2433 mm (96 in.)
- Blade width range: 2667–3150 mm (105–124 in.)
- Undercarriage configurations: Standard and LGP
- Add versatility with brush protection, winch, or ripper



650 P-Tier Dozer

- 78 kW (104 net hp) at 1,900 rpm
- Operating weight: 9600–10 198 kg (21,165–22,484 lb.)
- Track on ground: 2626 mm (103 in.)
- Blade width range: 2667–3251 mm (105–128 in.)
- Undercarriage configurations: XLT and LGP
- Add versatility with brush protection, winch, or ripper



School the competition.

There's more to like in our L-Series Dozers — such as SmartGrade™ models that integrate grade-control technology into the machine to deliver more accurate grading results. Eco mode for improved fuel economy with no loss of performance. Hydraulic-driven fan that provides efficient cooling, reduces noise, and conserves fuel. Convenient sealed-switch module for fingertip control of numerous features. And the customer-inspired 850L that can help push the productivity of your operation to the next level. All L-Series Dozers are available in multiple undercarriage configurations, with the 700L and 850L also available as pipelayers. Other dozers may have to grade on a curve to match up.

JohnDeere.com/dozers



700L Dozer / 700L SmartGrade Dozer

- 101 kW (135 net hp) at 1,800 rpm
- Operating weight: 14 016–14 555 kg (30,900–32,088 lb.)
- Track on ground: 2615 mm (103 in.)
- Blade width range: 3077–3688 mm (121–145 in.)
- Blade configuration: Power-angle-tilt (PAT)
- Undercarriage configurations: XLT, LGP, and pipelayer
- Add versatility with forestry protection, winch, counterweight, or ripper



750L Dozer / 750L SmartGrade Dozer

- 131 kW (175 net hp) at 1,700 rpm
- Operating weight: 17 041–18 162 kg (37,569–40,040 lb.)
- Track on ground: 2604–3093 mm (103–122 in.)
- Blade width range: 3265–4083 mm (129–161 in.)
- Blade configurations: PAT and outside dozer (OSD)
- Undercarriage configurations: Standard, XLT, and LGP
- Add versatility with forestry protection, winch, counterweight, or ripper



850L Dozer / 850L SmartGrade Dozer

- 168 kW (225 net hp) at 1,700 rpm
- Operating weight: 21 581–23 299 kg (47,578–51,365 lb.)
- Track on ground: 3300 mm (130 in.)
- Blade width range: 3266–4935 mm (129–194 in.)
- Blade configurations: PAT, OSD, and Mechanical Angle (MA)
- Undercarriage configurations: XLT, WLT, LGP, and pipelayer
- Add versatility with brush protection, winch, ripper, or waste-handler configuration



Push the limits.

Large, strong, and powerful, our high-production dozers deliver the supersize performance you need to get big jobs done. The 1050K features a suspended double-bogie undercarriage designed to reduce peak vibrations in the cab by up to 75 percent for a smooth ride over rocky terrain. Our 950K — including a SmartGrade™ model — is the largest dozer on the market available with a six-way power-angle-tilt (PAT) blade.* Eco mode regulates engine rpm based on machine load, to burn less fuel without sacrificing productivity. Comparable-size dozers aren't known for the same production-boosting advantages.

*PAT blade available only with LGP track configuration.

JohnDeere.com/dozers



950K Dozer / 950K SmartGrade Dozer

- 198 kW (265 net hp) at 1,800 rpm with outside dozer (OSD) blade / 209 kW (280 net hp) at 1,800 rpm with power-angle-tilt (PAT) blade
- Operating weight: 29 606–33 431 kg (65,300–73,700 lb.)
- Track on ground: 3214–3431 mm (126.5–135.1 in.)
- Blade width range: 3886–5184 mm (153–204 in.)
- Blade configurations: OSD, PAT, and Mechanical Angle (MA)
- Undercarriage configurations: Standard and LGP
- Options: Parallelogram multi-shank ripper and waste-handler configuration



1050K Dozer

- 261 kW (350 net hp) at 1,800 rpm
- Operating weight: 43 270–43 590 kg (95,400–96,100 lb.)
- Track on ground: 3419 mm (134.6 in.)
- Blade width range: 3987–5139 mm (157–202 in.)
- Blade configurations: OSD and MA
- Undercarriage configurations: Standard and pipelayer
- Options: Parallelogram single- and multi-shank rippers and waste-handler configuration



Multitasking made easier.

Whether you're excavating, loading trucks, or backfilling, our crawler loaders provide the muscle and versatility you need to put your operation on the fast track. Expansive visibility, spacious cabs, easy-to-operate controls, and full-featured hydrostatic drivetrains help simplify a wide variety of work. Literally loaded with production- and uptime-enhancing features, the proven 655K and 755K will change your mind about crawler loaders.

JohnDeere.com/crawlers



655K Crawler Loader

- 116 kW (155 net hp) at 1,700 rpm
- Operating weight: 18 422 kg (40,614 lb.)
- Bucket breakout force: 148 kN (33,271 lbf)
- Bucket capacity heaped range: 1.6–1.9 m³ (2.1–2.4 cu. yd.)
- Static tipping load: 12 184–12 443 kg (26,861–27,432 lb.)
- Overall length (with bucket and teeth): 6635–6735 mm (261–265 in.)
- Bucket width: 2470 mm (97 in.)



755K Crawler Loader

- 145 kW (194 net hp) at 1,800 rpm
- Operating weight: 20 492 kg (45,178 lb.)
- Bucket breakout force: 197 kN (44,287 lbf)
- Bucket capacity heaped range: 2.0–2.5 m³ (2.6–3.2 cu. yd.)
- Static tipping load: 14 901–15 362 kg (32,851–33,867 lb.)
- Overall length (with bucket and teeth): 6824 mm (269 in.)
- Bucket width: 2591 mm (102 in.)



17G Compact Excavator

- 10.8 kW (14.5 hp) at 2,400 rpm
- Operating weight: 1720 kg (3,790 lb.)
- Digging depth: 2.19 m (7 ft. 2 in.)
- Digging reach: 3.81 m (12 ft. 6 in.)
- Bucket breakout force: 16.0 kN (3,597 lb.)
- Swing speed: 0–9.4 rpm
- Arm length: 0.93 m (3 ft. 1 in.) standard



26G Compact Excavator

- 14.9 kW (20.0 net hp) at 2,500 rpm
- Operating weight: 2620 kg (5,780 lb.) canopy / 2770 kg (6,110 lb.) cab
- Digging depth: 2.59 m (8 ft. 6 in.)
- Digging reach: 4.63 m (15 ft. 2 in.)
- Bucket breakout force: 22.21 kN (4,994 lb.)
- Swing speed: 0–9.1 rpm
- Arm length: 1.17 m (3 ft. 10 in.) standard



30G Compact Excavator

- 17.4 kW (23 net hp) at 2,400 rpm
- Operating weight: 3105 kg (6,850 lb.) canopy / 3275 kg (7,220 lb.) cab
- Digging depth: 2.79 m (9 ft. 2 in.)
- Digging reach: 4.89 m (16 ft. 1 in.)
- Bucket breakout force: 27.0 kN (6,110 lb.)
- Swing speed: 0–9.1 rpm
- Arm length: 1.17 m (3 ft. 10 in.) standard

Don't bust your tail.

Some work requires a smaller machine to achieve bigger results. For those kinds of jobs, turn to one of our compact excavators, including our 30G with its impressive horsepower, lift capacity, and breakout force. Small statures, job-proven components, and easy ergonomic controls enable these highly maneuverable machines to put more work within reach. Equip them with a hydraulic breaker or any of more than 100 John Deere attachments to increase productivity in tight quarters and on crowded jobsites.

JohnDeere.com/excavators



35G Compact Excavator

- 17.4 kW (23.3 net hp) at 2,400 rpm
- Operating weight: 3520 kg (7,760 lb.) canopy / 3690 kg (8,135 lb.) cab
- Digging depth: 3.06–3.46 m (10 ft. 0 in.–11 ft. 4 in.)
- Digging reach: 5.21 m (17 ft. 1 in.)
- Bucket breakout force: 27.1 kN (6,085 lb.)
- Swing speed: 0–9.0 rpm
- Arm lengths: 1.32 m (4 ft. 4 in.) standard / 1.72 m (5 ft. 8 in.) long



50G Compact Excavator

- 26.8 kW (35.9 net hp) at 2,400 rpm
- Operating weight: 4790 kg (10,560 lb.) canopy / 4920 kg (10,847 lb.)
- Digging depth: 3.53–3.83 m (11 ft. 7 in.–12 ft. 7 in.)
- Digging reach: 5.96 m (19 ft. 7 in.)
- Bucket breakout force: 36.8 kN (8,267 lb.)
- Swing speed: 0–9.0 rpm
- Arm lengths: 1.38 m (4 ft. 6 in.) standard / 1.69 m (5 ft. 7 in.) long



60G Compact Excavator

- 39.6 kW (53 net hp) at 2,000 rpm
- Operating weight: 6010 kg (13,250 lb.) canopy / 6180 kg (13,620 lb.) cab
- Digging depth: 3.77–4.12 m (12 ft. 4 in.–13 ft. 6 in.)
- Digging reach: 6.23 m (20 ft. 5 in.)
- Bucket breakout force: 41.1 kN (9,240 lb.)
- Swing speed: 0–9.5 rpm
- Arm lengths: 1.5 m (4 ft. 11 in.) standard / 1.85 m (6 ft. 1 in.) long



Now you're going places.

The proven John Deere 190G W Wheeled Excavator easily navigates streets and hard surfaces to deliver powerful digging force in a well-balanced, high-stability machine. Even with all that muscle outside, operators find quiet comfort inside a spacious air-conditioned cab. Like all of our excavators, low-effort levers deliver smooth boom and bucket control. Climb aboard this Deere wheeled excavator and get to the bottom of increased productivity.

JohnDeere.com/excavators



190G W Wheeled Excavator

- 129 kW (173 net hp)
at 1,800 rpm
- Operating weight:
19 700–20 500 kg
(43,431–45,300 lb.)
- Digging depth / Maximum
reach: 5.83–5.93 m (19 ft.
2 in.–19 ft. 5 in.) / 9.58 m
(31 ft. 5 in.)
- Bucket digging force:
126 kN (28,330 lb.)
- Arm length: 2.71 m
(8 ft. 11 in.)
- Arm digging force: 95 kN
(21,360 lb.)
- Optional two-piece boom



75G Excavator

- 42.4 kW (56.9 net hp) at 2,000 rpm
- Operating weight: 8143 kg (17,952 lb.)
- Digging depth: 4.61 m (15 ft. 1 in.)
- Maximum reach: 6.92 m (22 ft. 8 in.)
- Bucket digging force: 46.6 kN (10,476 lb.)
- Maximum travel speed: 5.0 km/h (3.1 mph)
- Arm length: 2.12 m (6 ft. 11 in.)
- Arm digging force: 30.7 kN (6,902 lb.)
- Drawbar pull: 6650 kg (14,661 lb.)



85G Excavator

- 42.4 kW (56.9 net hp) at 2,000 rpm
- Operating weight: 8729 kg (19,244 lb.)
- Digging depth: 4.51 m (14 ft. 10 in.)
- Maximum reach: 7.70 m (25 ft. 3 in.)
- Bucket digging force: 46.6 kN (10,476 lb.)
- Maximum travel speed: 5.0 km/h (3.1 mph)
- Arm length: 2.12 m (6 ft. 11 in.)
- Arm digging force: 30.7 kN (6,902 lb.)
- Drawbar pull: 6650 kg (14,661 lb.)



130 P-Tier Excavator

- 73 kW (98 net hp) at 2,000 rpm
- Operating weight: 13 407–13 880 kg (29,531–30,573 lb.)
- Digging depth: 5.54–6.03 m (18 ft. 2 in.–19 ft. 9 in.)
- Maximum reach: 8.77 m (28 ft. 9 in.)
- Bucket digging force: 96 kN (21,480 lb.)
- Arm lengths: 2.52 m (8 ft. 3 in.) / 3.01 m (9 ft. 11 in.)
- Arm digging force: 60 kN (13,521 lb.)
- Drawbar pull: 11 217 kg (24,729 lb.)

Big performance in every size.

With a full line of models, plus numerous options and attachments, we've got an excavator to tackle your tasks. From maneuverable compacts and the new budget-friendly 200 G-Tier to our large 670 and 870 P-Tier Excavators, all models are designed to maximize productivity and efficiency on a variety of jobsites. Spacious cabs enable expansive visibility, and low-effort joystick controls, unmatched metering, and smooth multifunction operation provide proven precision. Flexible grade-management solutions on 210, 350, 380, and 470 P-Tier models include your choice of economical Excavator Grade Guidance or fully integrated SmartGrade™ 3D Grade Control. Our wide-ranging solutions can deliver sizable results for your operation.

JohnDeere.com/excavators



135 P-Tier Excavator

- 75 kW (101 net hp) at 2,000 rpm
- Operating weight: 14 300–15 400 kg (31,526–33,951 lb.)
- Digging depth: 5.98 m (20 ft. 0 in.)
- Maximum reach: 8.86 m (29 ft. 2 in.)
- Bucket digging force: 104 kN (23,380 lb.)
- Arm length: 3.01 m (9 ft. 11 in.)
- Arm digging force: 61 kN (13,710 lb.)
- Drawbar pull: 11 217 kg (24,729 lb.)



160 P-Tier Excavator

- 90 kW (122 net hp) at 2,200 rpm
- Operating weight: 17 945 kg (39,526 lb.)
- Digging depth: 5.98–6.49 m (19 ft. 7 in.–21 ft. 4 in.)
- Maximum reach: 9.33 m (30 ft. 7 in.)
- Bucket digging force: 112 kN (25,180 lb.)
- Arm lengths: 2.60 m (8 ft. 6 in.) / 3.10 m (10 ft. 2 in.)
- Arm digging force: 81 kN (18,210 lb.)
- Drawbar pull: 17 250 kg (38,030 lb.)



200 G-Tier Excavator

- 109 kW (146 net hp) at 2,000 rpm
- Operating weight: 20 507 kg (45,170 lb.)
- Digging depth: 6.57–7.07 m (21 ft. 7 in.–23 ft. 2 in.)
- Maximum reach: 9.94 m (32 ft. 7 in.)
- Bucket digging force: 127 kN (28,552 lb.)
- Arm lengths: 2.71 m (8 ft. 10 in.) / 3.21 m (10 ft. 6 in.)
- Arm digging force: 83.7 kN (18,825 lb.)
- Drawbar pull: 17 250 kg (38,030 lb.)

Excavators



210 P-Tier Excavator • SmartGrade™

- 119 kW (159 net hp) at 2,000 rpm
- Operating weight: 23 560–24 260 kg (51,940–53,483 lb.)
- Digging depth: 6.67 m (21 ft. 11 in.)
- Maximum reach: 9.92 m (32 ft. 7 in.)
- Bucket digging force: 158 kN (35,520 lb.)
- Arm length: 2.91 m (9 ft. 7 in.)
- Arm digging force: 114 kN (25,628 lb.)
- Drawbar pull (turtle mode): 20 700 kg (45,636 lb.)



245 P-Tier Excavator

- 119 kW (159 net hp) at 2,000 rpm
- Operating weight: 25 500–25 800 kg (56,218–56,879 lb.)
- Digging depth: 6.62 m (21 ft. 8 in.)
- Maximum reach: 10.11 m (33 ft. 4 in.)
- Bucket digging force: 158 kN (35,520 lb.)
- Arm length: 2.91 m (9 ft. 7 in.)
- Arm digging force: 114 kN (25,630 lb.)
- Drawbar pull: 203 kN (45,640 lb.)



250 P-Tier Excavator

- 140 kW (188 net hp) at 2,100 rpm
- Operating weight: 27 500 kg (60,600 lb.)
- Digging depth: 6.96–7.61 m (22 ft. 10 in.–25 ft. 0 in.)
- Maximum reach: 10.91 m (35 ft. 10 in.)
- Bucket digging force: 189 kN (42,489 lb.)
- Arm lengths: 2.96 m (9 ft. 9 in.) / 3.61 m (11 ft. 10 in.)
- Arm digging force: 114 kN (25,628 lb.)
- Drawbar pull: 21 900 kg (48,300 lb.)



300 P-Tier Excavator

- 166 kW (223 net hp) at 1,900 rpm
- Operating weight: 31 150 kg (68,674 lb.)
- Digging depth: 7.22–7.87 m (23 ft. 8 in.–25 ft. 10 in.)
- Maximum reach: 11.27 m (37 ft. 0 in.)
- Bucket digging force: 202 kN (45,411 lb.)
- Arm lengths: 3.11 m (10 ft. 2 in.) / 3.76 m (12 ft. 4 in.)
- Arm digging force: 127 kN (28,551 lb.)
- Drawbar pull: 25 085 kg (55,303 lb.)



345 P-Tier Excavator

- 186 kW (249 net hp) at 1,900 rpm
- Operating weight: 35 700 kg (78,705 lb.)
- Digging depth: 6.92–7.57 m (22 ft. 8 in.–24 ft. 10 in.)
- Maximum reach: 11.46 m (37 ft. 7 in.)
- Bucket digging force: 202 kN (45,410 lb.)
- Arm lengths: 3.11 m (10 ft. 2 in.) / 3.76 m (12 ft. 4 in.)
- Arm digging force: 127 kN (28,550 lb.)
- Drawbar pull: 30 388 kg (66,990 lb.)



350 P-Tier Excavator • SmartGrade

- 202 kW (271 net hp) at 1,900 rpm
- Operating weight: 36 734 kg (80,985 lb.)
- Digging depth: 7.38–8.18 m (24 ft. 3 in.–26 ft. 10 in.)
- Maximum reach: 11.86 m (38 ft. 11 in.)
- Bucket digging force: 246 kN (55,303 lb.)
- Arm lengths: 3.2 m (10 ft. 6 in.) / 4.0 m (13 ft. 1 in.)
- Arm digging force: 159 kN (35,745 lb.)
- Drawbar pull: 30 350 kg (66,900 lb.)



380 P-Tier Excavator - SmartGrade

- 202 kW (271 net hp) at 1,900 rpm
- Operating weight: 38 765 kg (85,462 lb.)
- Digging depth: 7.38–8.18 m (24 ft. 3 in.–26 ft. 10 in.)
- Maximum reach: 11.86 m (38 ft. 11 in.)
- Bucket digging force: 246 kN (55,303 lb.)
- Arm lengths: 3.2 m (10 ft. 6 in.) / 4.0 m (13 ft. 1 in.)
- Arm digging force: 159 kN (35,745 lb.)
- Drawbar pull: 30 350 kg (66,900 lb.)



470 P-Tier Excavator - SmartGrade

- 274 kW (367 net hp) at 2,000 rpm
- Operating weight: 51 218 kg (112,916 lb.)
- Digging depth: 7.77–8.27 m (25 ft. 6 in.–27 ft. 2 in.)
- Maximum reach: 12.49 m (41 ft. 0 in.)
- Bucket digging force: 301 kN (67,564 lb.)
- Arm lengths: 3.4 m (11 ft. 2 in.) / 3.9 m (12 ft. 10 in.)
- Arm digging force: 204 kN (45,925 lb.)
- Drawbar pull: 33 537 kg (73,937 lb.)



670 P-Tier Excavator

- 345 kW (463 net hp) at 1,800 rpm
- Operating weight: 69 900 kg (154,103 lb.)
- Digging depth: 7.12–9.15 m (23 ft. 4 in.–30 ft. 0 in.)
- Maximum reach: 13.85 m (45 ft. 5 in.)
- Bucket digging force: 369 kN (82,954 lb.)
- Arm lengths: 2.9 m (9 ft. 6 in.) ME / 3.6 m (11 ft. 10 in.) / 4.2 m (13 ft. 9 in.)
- Arm digging force: 306 kN (68,792 lb.)
- Drawbar pull: 46 115 kg (101,666 lb.)



870 P-Tier Excavator

- 382 kW (512 net hp) at 1,800 rpm
- Operating weight: 85 600 kg (188,716 lb.)
- Digging depth: 7.14–11.16 m (23 ft. 5 in.–36 ft. 7 in.)
- Maximum reach: 16.55 m (54 ft. 4 in.)
- Bucket digging force: 399 kN (89,699 lb.)
- Arm lengths: 2.95 m (9 ft. 8 in.) ME / 3.7 m (12 ft. 2 in.) / 4.4 m (14 ft. 5 in.)
- Arm digging force: 280 kN (62,946 lb.)
- Drawbar pull: 57 085 kg (125,850 lb.)



184 G-Tier Loader

- 33 kW (44 net hp) at 2,200 rpm
- Operating weight: 4840 kg (10,670 lb.)
- Bucket capacity range: 0.7–1.1 m³ (0.9–1.4 cu. yd.)
- Breakout force: 3250 kg (7,165 lb.)
- Full-turn tipping load: 2600 kg (5,732 lb.)
- Linkage: Standard



204 G-Tier Loader

- 47 kW (62 net hp) at 2,200 rpm
- Operating weight: 5220 kg (11,508 lb.)
- Bucket capacity range: 0.7–1.1 m³ (0.9–1.4 cu. yd.)
- Breakout force: 4180 kg (9,215 lb.)
- Full-turn tipping load: 3090 kg (6,812 lb.)
- Linkage: Standard



244 P-Tier Loader

- 52 kW (71 net hp) at 2,400 rpm
- Operating weight: 5560 kg (12,258 lb.)
- Bucket capacity range: 0.8–1.1 m³ (1.0–1.4 cu. yd.)
- Breakout force: 4895 kg (10,792 lb.)
- Full-turn tipping load: 3700 kg (8,157 lb.)
- Linkage: Standard

Think big, run small.

Delivering horsepower ranging from 33 to 76 kW (44 to 103 hp) and featuring bucket capacities from 0.7 to 2.0 cubic meters (0.9 to 2.6 cubic yards), our compact wheel loaders combine serious performance with small statures to maximize productivity in low-clearance and narrow spaces. Sure-footed stability, reliable reach, spacious cabs, ergonomically friendly controls, and easy serviceability are just a few of the advantages the brand-new 184 G-Tier, redesigned 204 and 304 G-Tier, and latest 244, 324, and 344 P-Tier bring to the jobsite. Pair yours with a pallet fork, grapple, broom, snow blower, or other weather-ready John Deere attachment to increase versatility and accomplish even more.

JohnDeere.com/wheelloaders



304 G-Tier Loader

- 53 kW (72 net hp) at 2,200 rpm
- Operating weight: 5920 kg (13,051 lb.)
- Bucket capacity range: 0.8–1.6 m³ (1.0–2.1 cu. yd.)
- Breakout force: 5000 kg (11,023 lb.)
- Full-turn tipping load: 3520 kg (7,760 lb.)
- Linkage: Standard



324 P-Tier Loader

- 52 kW (71 net hp) at 2,400 rpm
- Operating weight: 6400 kg (14,110 lb.)
- Bucket capacity range: 0.8–1.6 m³ (1.0–2.1 cu. yd.)
- Breakout force: 5650 kg (12,456 lb.)
- Full-turn tipping load: 4430 kg (9,766 lb.)
- Linkages: Standard and High-Lift



344 P-Tier Loader

- 76 kW (103 net hp) at 2,000 rpm
- Operating weight: 8860 kg (19,533 lb.)
- Bucket capacity range: 1.5–2.0 m³ (2.0–2.6 cu. yd.)
- Breakout force: 7444 kg (16,411 lb.)
- Full-turn tipping load: 5710 kg (12,588 lb.)
- Linkages: Standard and High-Lift



Well within reach.

The latest John Deere wheel loaders are designed and purpose built to match the machine to the work you need to do. The dependable, economical 544 and 644 G-Tier tackle light- to medium-duty tasks like nobody's business. When your high-production projects need a heavy-duty lift, add a 444–724 P-Tier to the lineup. With its combined E-Drive and PowerShift™ transmission that delivers strong pushing power and fast ramp-climbing ability, the 644 X-Tier provides fuel-efficient, multipurpose might. No matter the application, we have the loader to take your operation to new heights.

JohnDeere.com/wheelloaders



444 P-Tier Loader

- 92 kW (124 net hp) at 2,100 rpm
- Operating weight: 11 709–12 551 kg (25,814–27,670 lb.)
- Bucket capacity range: 1.9–3.4 m³ (2.5–4.5 cu. yd.)
- Breakout force: 5977–8841 kg (13,177–19,491 lb.)
- Full-turn tipping load, no tire deflection: 5558–7732 kg (12,254–17,047 lb.)
- Linkages: Z-Bar and High-Lift



524 P-Tier Loader

- 113 kW (152 net hp) at 1,800 rpm
- Operating weight: 13 123–14 105 kg (28,931–31,097 lb.)
- Bucket capacity range: 1.9–3.4 m³ (2.5–4.5 cu. yd.)
- Breakout force: 8475–11 070 kg (18,684–24,406 lb.)
- Full-turn tipping load, no tire deflection: 5965–8955 kg (13,150–19,742 lb.)
- Linkages: Z-Bar, High-Lift, High-Lift Plus, and Tool Carrier



544 G-Tier Loader

- 125 kW (168 net hp) at 1,800 rpm
- Operating weight: 12 993–13 556 kg (28,646–29,886 lb.)
- Bucket capacity range: 2.1–2.3 m³ (2.75–3.00 cu. yd.)
- Breakout force: 8296–10 916 kg (18,290–24,067 lb.)
- Full-turn tipping load, no tire deflection: 8118–9770 kg (17,897–21,540 lb.)
- Linkages: Z-Bar and High-Lift





544 P-Tier Loader

- 123 kW (166 net hp) at 1,700 rpm
- Operating weight: 13 844–14 827 kg (30,520–32,827 lb.)
- Bucket capacity range: 1.9–4.0 m³ (2.5–5.25 cu. yd.)
- Breakout force: 10 013–14 138 kg (22,074–31,168 lb.)
- Full-turn tipping load, no tire deflection: 6501–9653 kg (14,040–21,281 lb.)
- Linkages: Z-Bar, High-Lift, and High-Lift Plus



624 P-Tier Loader

- 143 kW (192 net hp) at 1,600 rpm
- Operating weight: 15 747–16 799 kg (34,715–37,174 lb.)
- Bucket capacity range: 1.9–4.0 m³ (2.5–5.25 cu. yd.)
- Breakout force: 10 290–13 605 kg (22,686–29,994 lb.)
- Full-turn tipping load, no tire deflection: 8120–11 439 kg (17,581–25,218 lb.)
- Linkages: Z-Bar, High-Lift, High-Lift Plus, and Tool Carrier



644 G-Tier Loader

- 169 kW (227 net hp) at 1,800 rpm
- Operating weight: 17 934–18 692 kg (39,537–41,209 lb.)
- Bucket capacity range: 3.1–3.2 m³ (4.0–4.25 cu. yd.)
- Breakout force: 12 285–14 462 kg (27,084–31,883 lb.)
- Full-turn tipping load, no tire deflection: 11 674–13 347 kg (25,737–29,425 lb.)
- Linkage: Z-Bar



644 P-Tier Loader

- 186 kW (249 net hp) at 1,800 rpm
- Operating weight: 18 709–19 465 kg (41,246–42,913 lb.)
- Bucket capacity range: 3.1–3.6 m³ (4.0–4.75 cu. yd.)
- Breakout force: 13 569–15 574 kg (29,914–34,334 lb.)
- Full-turn tipping load, no tire deflection: 9718–12 987 kg (21,426–28,631 lb.)
- Linkages: Z-Bar and High-Lift



644 X-Tier Loader

- 172 kW (231 net hp) at 1,500 rpm
- Operating weight: 18 856–19 700 kg (41,571–43,430 lb.)
- Bucket capacity range: 3.1–3.6 m³ (4.0–4.75 cu. yd.)
- Breakout force: 14 414–15 574 kg (31,778–34,334 lb.)
- Full-turn tipping load, no tire deflection: 10 018–12 667 kg (22,085–27,925 lb.)
- Linkages: Z-Bar and High-Lift



724 P-Tier Loader

- 200 kW (268 net hp) at 1,800 rpm
- Operating weight: 19 825–20 459 kg (43,707–45,103 lb.)
- Bucket capacity range: 3.1–3.8 m³ (4.0–5.0 cu. yd.)
- Breakout force: 14 977–16 527 kg (33,018–36,436 lb.)
- Full-turn tipping load, no tire deflection: 11 146–14 204 kg (24,572–31,315 lb.)
- Linkages: Z-Bar and High-Lift



744 P-Tier Loader

- 236 kW (316 net hp) at 1,500 rpm
- Operating weight: 24 907–26 630 kg (54,920–58,709 lb.)
- Bucket capacity range: 3.8–4.5 m³ (5.0–5.85 cu. yd.)
- Breakout force: 15 116–19 447 kg (33,325–42,873 lb.)
- Full-turn tipping load, no tire deflection: 12 545–17 170 kg (27,656–37,860 lb.)
- Configurations: Standard-Lift, High-Lift, Log Handler, and Pipe Handler



824 P-Tier Loader

- 256 kW (343 net hp) at 1,600 rpm
- Operating weight: 26 460–28 101 kg (58,334–61,952 lb.)
- Bucket capacity range: 3.8–5.2 m³ (5.0–6.75 cu. yd.)
- Breakout force: 14 494–18 905 kg (31,954–41,678 lb.)
- Full-turn tipping load, no tire deflection: 14 169–18 116 kg (31,237–39,939 lb.)
- Configurations: Standard-Lift and High-Lift



844 P-Tier Loader

- 311 kW (417 net hp) at 1,400 rpm
- Operating weight: 33 943–34 777 kg (74,831–76,670 lb.)
- Bucket capacity range: 4.8–6.1 m³ (6.3–8.0 cu. yd.)
- Breakout force: 16 870–22 194 kg (37,192–48,929 lb.)
- Full-turn tipping load, no tire deflection: 20 380–22 842 kg (44,930–50,358 lb.)
- Configurations: Standard-Lift, Log Handler, and Pipe Handler

Make a big production out of everything.

With sure-footed stability, impressive loading performance, and smooth rides, these workhorses — including the in-charge 944 X-Tier and purpose-built-for-loadout 904 P-Tier — deliver on the jobsite. Each loader is packed with large, high-capacity axles; reliable PowerShift™ transmission; high-torque John Deere diesel; cabs redesigned for comfort; ergonomic controls; and state-of-the-art multifunction monitor. Our 744 and 844 P-Tier Log-Handler and Pipe-Handler options are designed to suit even bigger applications.

JohnDeere.com/wheelloaders



904 P-Tier Loader

- 320 kW (429 net hp) at 1,400 rpm
- Operating weight: 36 310–36 432 kg (80,050–80,318 lb.)
- Bucket capacity range: 7.1–7.5 m³ (9.3–9.8 cu. yd.)
- Breakout force: 21 080–25 308 kg (46,473–55,795 lb.)
- Full-turn tipping load, no tire deflection: 22 971–23 433 kg (50,642–51,661 lb.)
- Configuration: Standard-Lift



944 X-Tier Loader

- 400 kW (536 net hp) at 1,600 rpm
- Operating weight: 54 253–56 524 kg (119,607–124,614 lb.)
- Bucket capacity range: 6.5–7.65 m³ (8.5–10.0 cu. yd.)
- Breakout force: 40 795–47 747 kg (89,937–105,264 lb.)
- Full-turn tipping load, no tire deflection: 29 232–34 150 kg (64,445–75,288 lb.)
- Configurations: Standard Boom and Long Boom



Purpose-built for a wide variety of work.

If you think the reimagined 210 P-Tier is only a grading machine, you're just scratching the surface of this purpose-built tractor loader's potential. Improved loader capacities enable increased lifting and breakout forces. Updated hydraulic gear pump increases hydraulic flow by 15 percent during loader applications, improving loader cycle times over earlier models. Add a multipurpose bucket, box blade, or power takeoff, and take on an even wider variety of tasks. The 210 G-Tier is easy on your budget and ideal for fleet owners and rental yards.

JohnDeere.com/tractorloader



210 G-Tier Tractor Loader

- 52 kW (69 net hp) at 2,100 rpm
- Operating weight: 5334 kg (11,760 lb.)
- Bucket capacity range: 0.86–1.00 m³ (1.12–1.31 cu. yd.)
- Breakout force: 42.3 kN (9,521 lb.)
- Lift capacity, full height: 2876 kg (6,340 lb.)



210 P-Tier Tractor Loader

- 75 kW (100 net hp) at 1,600 rpm
- Operating weight: 5744 kg (12,664 lb.)
- Bucket capacity range: 0.86–1.00 m³ (1.12–1.31 cu. yd.)
- Breakout force: 42.3 kN (9,521 lb.)
- Lift capacity, full height: 2876 kg (6,340 lb.)



On the leading edge.

Our smallest graders, the 620G and 622G are designed to maximize jobsite maneuverability. Horsepower and hydraulic force are economical, yet ultracapable for both roading and fine grading. Fully adjustable dual-joystick control option and seat enable comfortable machine operation. Integrated standard steering wheel is still a reliable choice. Auto-Shift PLUS transmission, premium circle, and the SmartGrade™ fully integrated, mastless 3D grade-control system are available on all models. Exclusive automation features on Grade Pro (GP) machines round out the crowd-pleasing options.

JohnDeere.com/graders



620G/GP/SmartGrade Motor Grader

- 138–160 kW (185–215 net hp)
- Typical operating weight: 18 325 kg (40,400 lb.)
- Blade pull: 14 091 kg (31,066 lb.)
- Tandem drive
- Transmission: Direct-drive John Deere PowerShift Plus™



622G/GP/SmartGrade Motor Grader

- 138–168 kW (185–225 net hp)
- Typical operating weight: 19 100 kg (42,108 lb.)
- Blade pull: 20 412 kg (45,000 lb.)
- Six-wheel drive
- Transmission: Direct-drive John Deere PowerShift Plus



**670G/GP/SmartGrade
Motor Grader**

- 172–175 kW (230–235 net hp)
- Typical operating weight: 19 230 kg (42,395 lb.)
- Blade pull: 15 501 kg (34,173 lb.)
- Tandem drive
- Transmission: Direct-drive John Deere PowerShift Plus™



**672G/GP/SmartGrade
Motor Grader**

- 187–190 kW (250–255 net hp)
- Typical operating weight: 20 000 kg (44,092 lb.)
- Blade pull: 22 453 kg (49,500 lb.)
- Six-wheel drive
- Transmission: Direct-drive John Deere PowerShift Plus



**770G/GP/SmartGrade
Motor Grader**

- 187–190 kW (250–255 net hp)
- Typical operating weight: 19 425 kg (42,825 lb.)
- Blade pull: 15 501 kg (34,173 lb.)
- Tandem drive
- Transmission: Direct-drive John Deere PowerShift Plus

So many options, one obvious choice.

Our graders let you decide how work gets done. Increased horsepower, torque, operating weight, and blade pull deliver generous power and lugging ability for easily pulling through tough spots or tackling steep hills. These brawny blades come standard equipped with Eco mode that helps reduce operating costs by optimizing fuel usage up to 10 percent. Exclusive John Deere automation features available on Grade Pro (GP) models and optional Auto-Shift PLUS transmission and premium circle on both GP and G-Series machines can move you ahead in a big way. And all models are available in SmartGrade™ configurations.

JohnDeere.com/graders



772G/GP/SmartGrade Motor Grader

- 201–205 kW (270–275 net hp)
- Typical operating weight: 20 500 kg (45,195 lb.)
- Blade pull: 22 453 kg (49,500 lb.)
- Six-wheel drive
- Transmission: Direct-drive John Deere PowerShift Plus



870G/GP/SmartGrade Motor Grader

- 201–209 kW (270–280 net hp)
- Typical operating weight: 20 715 kg (45,668 lb.)
- Blade pull: 15 501 kg (34,173 lb.)
- Tandem drive
- Transmission: Direct-drive John Deere PowerShift Plus



872G/GP/SmartGrade Motor Grader

- 209–224 kW (280–300 net hp)
- Typical operating weight: 21 600 kg (47,620 lb.)
- Blade pull: 22 453 kg (49,500 lb.)
- Six-wheel drive
- Transmission: Direct-drive John Deere PowerShift Plus



316GR

DEERE



DEERE

Big productivity in a compact package.

Before hitting the G-Series drawing board, we connected with skid steer users like you to find out what they needed in our small-frame machines. We listened, then rolled up our sleeves and applied what we learned. The result? Capable compacts in vertical-lift and radial-boom configurations. Wheel options enable these mighty minis to fit through narrow five-foot openings. Standard electrohydraulic joystick controls allow operators to take command. Two-speed option provides faster transport speeds. And with generous auxiliary hydraulic flow to accommodate a broad range of attachments, you can boost productivity even more.

JohnDeere.com/skidsteers



316GR Skid Steer

- 48.5 kW (65 gross hp) / 45.6 kW (61 net hp) at 2,600 rpm
- Operating weight: 2806 kg (6,180 lb.)
- Bucket breakout force with foundry bucket: 2384 kg (5,250 lb.)
- Tipping load: 1589 kg (3,500 lb.)
- Rated operating capacity: 795 kg (1,750 lb.)



318G Skid Steer

- 48.5 kW (65 gross hp) / 45.6 kW (61 net hp) at 2,600 rpm
- Operating weight: 2970 kg (6,542 lb.)
- Bucket breakout force with foundry bucket: 2724 kg (6,000 lb.)
- Tipping load: 1766 kg (3,890 lb.)
- Rated operating capacity: 883 kg (1,945 lb.)



Rise higher and reach farther.

You wanted a bigger skid steer with farther-reaching abilities. So we delivered — our proven mid-frame and large-frame G-Series vertical-lift models feature excellent bucket breakout force. Greater auxiliary hydraulic flow powers controls and attachments, with more power under the hood and increased lift height, dump clearance, and reach than earlier models. They work comfortably in tight quarters and are easy to transport. Plus electrohydraulic joystick controls come standard. All to help you do more — and then some — with one machine.

JohnDeere.com/skidsteers



320G Skid Steer

- 51.7 kW (69 gross hp) / 49.4 kW (66 net hp) at 2,500 rpm
- Operating weight: 3246 kg (7,150 lb.)
- Bucket breakout force with foundry bucket: 2724 kg (6,000 lb.)
- Tipping load: 1989 kg (4,380 lb.)
- Rated operating capacity: 994 kg (2,190 lb.)



324G Skid Steer

- 55.0 kW (74 gross hp) / 52.5 kW (70 net hp) at 2,500 rpm
- Operating weight: 3496 kg (7,700 lb.)
- Bucket breakout force with foundry bucket: 3973 kg (8,750 lb.)
- Tipping load: 2443 kg (5,380 lb.)
- Rated operating capacity: 1221 kg (2,690 lb.)



330G Skid Steer

- 68.0 kW (91 gross hp) / 66.0 kW (89 net hp) at 2,500 rpm
- Operating weight: 4495 kg (9,900 lb.)
- Bucket breakout force with foundry bucket: 4676 kg (10,300 lb.)
- Tipping load: 2724 kg (6,000 lb.)
- Rated operating capacity: 1362 kg (3,000 lb.)



332G Skid Steer

- 74.6 kW (100 gross hp) / 72.0 kW (97 net hp) at 2,500 rpm
- Operating weight: 4540 kg (10,000 lb.)
- Bucket breakout force with foundry bucket: 6307 kg (13,904 lb.)
- Tipping load: 3269 kg (7,200 lb.)
- Rated operating capacity: 1634 kg (3,600 lb.)



317G CTL

- 48.5 kW (65 gross hp) / 45.6 kW (61 net hp) at 2,600 rpm
- Tipping load: 2756 kg (6,070 lb.)
- Rated operating capacity: 965 kg (2,125 lb.) at 35-percent tipping load / 1378 kg (3,035 lb.) at 50-percent tipping load
- Bucket breakout force with foundry bucket: 2724 kg (6,000 lb.)



325G CTL

- 54.8 kW (74 gross hp) / 52.5 kW (70 net hp) at 2,500 rpm
- Tipping load: 3360 kg (7,400 lb.)
- Rated operating capacity: 1176 kg (2,590 lb.) at 35-percent tipping load / 1680 kg (3,700 lb.) at 50-percent tipping load
- Bucket breakout force with foundry bucket: 3973 kg (8,750 lb.)



331G CTL

- 68.0 kW (91 gross hp) / 66.0 kW (89 net hp) at 2,500 rpm
- Tipping load: 4021 kg (8,857 lb.)
- Rated operating capacity: 1407 kg (3,100 lb.) at 35-percent tipping load / 2011 kg (4,429 lb.) at 50-percent tipping load
- Bucket breakout force with foundry bucket: 4688 kg (10,325 lb.)

Get on the right track.

Our G-Series Compact Track Loader (CTL) lineup features customer-inspired updates including spacious and quiet pressurized cabs with expansive sightlines and curved-glass doors that swing out for easy passage. The 333G SmartGrade™ CTL is the first compact machine in the industry to feature fully integrated 3D grade-control technology. The 325G mid-frame bridges the jobsite middle distance with plenty of pushing power and auxiliary hydraulic flow. And at less than 72 inches wide, with a 65-inch spacer option, the updated 317G is easy to trailer. With exceptional stability, breakout forces, and service access, these track stars help you do more, more reliably, for less.

JohnDeere.com/ctls



333G CTL

- 74.6 kW (100 gross hp) / 72.0 kW (97 net hp) at 2,500 rpm
- Tipping load: 4799 kg (10,570 lb.)
- Rated operating capacity: 1680 kg (3,700 lb.) at 35-percent tipping load / 2399 kg (5,285 lb.) at 50-percent tipping load
- Bucket breakout force with foundry bucket: 6243 kg (13,750 lb.)



333G SmartGrade CTL

- 74.6 kW (100 gross hp) / 72.0 kW (97 net hp) at 2,500 rpm
- Tipping load: 5280 kg (11,630 lb.)
- Rated operating capacity: 1848 kg (4,071 lb.) at 35-percent tipping load / 2640 kg (5,815 lb.) at 50-percent tipping load
- Bucket breakout force with foundry bucket: 6243 kg (13,750 lb.)



Manage waste with haste.

Our waste-handler dozers are designed specifically to meet the challenges of mastering solid waste. Anything susceptible to damage has been sealed, moved, rerouted, or reengineered to keep trash and harm's way at bay. And these material managers come standard with a reversing fan that automatically blows away refuse. Keep your operation cool, clean, and under control with a John Deere waste-handler dozer.



850L Waste-Handler Dozer

- 168 kW (225 net hp) at 1,700 rpm
- Operating weight: 24 533–24 654 kg (54,086–54,353 lb.)
- Undercarriage / blade configurations / blade capacity (with trash rack): LGP with power-angle-tilt (PAT): 9.9 m³ (12.9 cu. yd.) and LGP with outside dozer (OSD): 11.7 m³ (15.3 cu. yd.)



950K Waste-Handler Dozer

- 198 kW (265 net hp) at 1,800 rpm
- Operating weight: 32 325–34 100 kg (71,250–75,150 lb.) includes doghouse and 660/910-mm (26/36 in.) trapezoidal shoes
- Undercarriage configurations: OSD and OSD LGP
- Blade capacity (with trash rack): Semi U blade: 14.1 m³ (18.4 cu. yd.) / U blade: 16.2 m³ (21.2 cu. yd.) / LGP Semi U blade: 17.0 m³ (22.2 cu. yd.)



1050K Waste-Handler Dozer

- 261 kW (350 net hp) at 1,800 rpm
- Operating weight: 46 600–46 850 kg (102,700–103,300 lb.) includes doghouse and 710-mm (28 in.) trapezoidal shoes
- Blade capacity (with trash rack): Semi U blade: 21.1 m³ (27.6 cu. yd.) / U blade: 22.8 m³ (29.8 cu. yd.)



624 P-Tier Waste-Handler Loader

- 143 kW (192 net hp) at 1,600 rpm
- Operating weight: 18 175–18 697 kg (40,067–41,220 lb.)
- Bucket capacity range: 3.1–4.6 m³ (4.0–6.0 cu. yd.)
- Height to hinge pin, fully raised, standard Z-Bar: 3.96 m (13 ft. 0 in.)
- Height to hinge pin, fully raised, High-Lift Z-Bar: 4.32 m (14 ft. 2 in.)



644 P-Tier Waste-Handler Loader

- 186 kW (249 net hp) at 1,800 rpm
- Operating weight: 22 285–22 832 kg (49,130–50,330 lb.)
- Bucket capacity range: 3.8–5.4 m³ (5.0–7.0 cu. yd.)
- Height to hinge pin, fully raised, standard Z-Bar: 4.09 m (13 ft. 5 in.)
- Height to hinge pin, fully raised, High-Lift Z-Bar: 4.50 m (14 ft. 9 in.)



644 X-Tier Waste-Handler Loader

- 172 kW (231 net hp) at 1,500 rpm
- Operating weight: 22 983–23 530 kg (50,669–51,875 lb.)
- Bucket capacity range: 3.8–5.4 m³ (5.0–7.0 cu. yd.)
- Height to hinge pin, fully raised, standard Z-Bar: 4.09 m (13 ft. 5 in.)
- Height to hinge pin, fully raised, High-Lift Z-Bar: 4.50 m (14 ft. 9 in.)



724 P-Tier Waste-Handler Loader

- 200 kW (268 net hp) at 1,800 rpm
- Operating weight: 22 767–23 289 kg (50,193–51,343 lb.)
- Bucket capacity range: 3.8–5.4 m³ (5.0–7.0 cu. yd.)
- Height to hinge pin, fully raised, standard Z-Bar: 4.16 m (13 ft. 8 in.)
- Height to hinge pin, fully raised, High-Lift Z-Bar: 4.50 m (14 ft. 9 in.)

Confront and conquer.

John Deere waste-handler wheel loaders and crawler loaders are engineered to meet the challenges of tackling tough solid-waste tasks at landfills, recycling facilities, scrapyards, and transfer stations. Durably constructed and fully equipped with rugged components, protective guarding and seals, and comfortable controls to work long and hard, these material masters have what it takes to take out the trash — and keep it out.



744 P-Tier Waste-Handler Loader

- 236 kW (316 net hp) at 1,500 rpm
- Operating weight: 29 918–30 783 kg (65,958–67,865 lb.)
- Bucket capacity range: 4.6–6.1 m³ (6.0–8.0 cu. yd.)
- Height to hinge pin, fully raised, standard Z-Bar: 4.27 m (14 ft. 0 in.)
- Height to hinge pin, fully raised, High-Lift Z-Bar: 4.84 m (15 ft. 11 in.)



655K Waste-Handler Crawler Loader

- 116 kW (155 net hp) at 1,700 rpm
- Operating weight: 19 104 kg (42,120 lb.)
- Blade capacity range: General purpose with trash rack: 3.6 m³ (4.7 cu. yd.) / Multipurpose without trash rack: 1.6 m³ (2.1 cu. yd.)
- Dump clearance: with general-purpose bucket: 2665 mm (105 in.) / with multipurpose bucket: 2700 mm (106.3 in.)



755K Waste-Handler Crawler Loader

- 145 kW (194 net hp) at 1,800 rpm
- Operating weight: 22 985 kg (50,675 lb.)
- Blade capacity range: General purpose with trash rack: 4.5 m³ (5.9 cu. yd.) / Multipurpose without trash rack: 2.0 m³ (2.6 cu. yd.)
- Dump clearance: with general-purpose bucket: 2950 mm (116 in.) / with multipurpose bucket: 2959 mm (116.5 in.)



Tracked Scraper Special

- 9RT 470: 346 kW (470 net hp)
- 9RT 520: 382 kW (520 net hp)
- 9RT 570: 419 kW (570 net hp)
- 9RX 490: 360 kW (490 net hp)
- 9RX 540: 397 kW (540 net hp)
- 9RX 590: 434 kW (590 net hp)
- Scraper package with heavy-duty short drawbar support, beacon, backup alarm, and e18™ 18-speed PowerShift transmission with Efficiency Manager™, JDLink™ connectivity, high-flow steering pump, and 435-L/m (115 gpm) high-flow scraper hydraulics
- AirCushion™ suspension system on RT models and cab-suspension system on RX models; HD Camoplast® Durabuilt® scraper track belts on both
- Major options: AutoLoad™, polyurethane mid-rollers, and scraper-specific ballast package

Give your earthmoving operations more pull.

If you make your living moving dirt, you'll find our Scraper Special tractors a great investment for pulling ejector or carry-all scrapers, disks, rollers, rippers, or water tanks. Available in both rubber-tire and track configurations, all 10 models feature spacious and quiet cabs, heavy-duty frames, and 18-speed PowerShift™ transmissions. Plus, they're backed by a two-year/2,000-hour full factory warranty and unsurpassed dealer support.

JohnDeere.com/scrapers



Wheeled Scraper Special

- 9R 490: 360 kW (490 net hp)
 - 9R 540: 397 kW (540 net hp)
 - 9R 590: 434 kW (590 net hp)
 - 9R 640: 471 kW (640 net hp)
- Scraper package with front axle supports and structural rear axle, heavy-duty short drawbar support, heavy-duty oscillation joint, beacon, backup alarm, e18 18-speed PowerShift transmission with Efficiency Manager, JDLink connectivity, and heavy-duty double-reduction axles with axle flats
 - Major options: AutoLoad, scraper-specific ballast package, industry-exclusive HydraCushion™ front suspension, 435-L/m (115 gpm) high-flow scraper hydraulics, and ActiveCommand Steering™ system



Ejector Style

- 1612D E (4 tire): 12.2-m³ (16.0 cu. yd.) heaped capacity, 3658-mm (12 ft.) cut
- 2010D E (4 tire and 2 tire): 15.3-m³ (20.0 cu. yd.) heaped capacity, 3200-mm (10 ft. 6 in.) cut
- 2014D E (6 tire): 15.3-m³ (20.0 cu. yd.) heaped capacity, 4420-mm (14 ft. 6 in.) cut
- 2412D E (4 tire and 2 tire): 18.3-m³ (24.0 cu. yd.) heaped capacity, 3658-mm (12 ft.) cut
- Cover any type of material
- 2-tire configuration available on 2010D E and 2412D E models
- Optimum blade-and-bowl design for maximum productivity
- Approved to operate in single, double, and triple configurations with total capacities up to 55 m³ (72 cu. yd.)
- Two-position router bits and several edge patterns for different soil conditions
- Super overflow spill guard standard and integrated
- Zinc-coated hydraulic lines and ORFS fittings
- GPS/laser racks and precision land-leveling kits
- Rear bumpers and scraper-to-scraper quick-attach hitches available — standard and integrated on 2-tire models
- 12-month warranty
- 24–28-percent scraper tongue weight distribution
- Exclusive AutoLoad system available
- Push-loading approved
- Brakes available on 18.3-m³ (24.0 cu. yd.) model

Master material – for less per yard.

Our construction-grade pull-type scrapers are built to maximize budgets and uptime. Impressive cut widths and heaped capacities deliver reliable results. AutoLoad™ option automates the scraper's hydraulic lift by varying blade height to maintain consistent loads and cut profiles. Earthmoving Productivity System accurately measures loaded volume in real time, for a full scraper after every cut, and transfers data via machine connectivity to monitor operational efficiency in the cab, at the office, or away from the jobsite. Now even new operators can move material mountains in no time.

JohnDeere.com/scrapers



Carry-All Style

- 1510D C (4 tire): 11.5-m³ (15.0 cu. yd.) capacity, 3048-mm (10 ft.) cut
 - 1812D C (4 tire): 13.8-m³ (18.0 cu. yd.) capacity, 3658-mm (12 ft.) cut
 - 1814D C (6 tire): 13.8-m³ (18.0 cu. yd.) capacity, 4267-mm (14 ft.) cut
 - 2112D C (6 tire): 16.4-m³ (21.5 cu. yd.) capacity, 3658-mm (12 ft.) cut
- Cover any type of material
 - Optimum blade-and-bowl design for maximum productivity
 - Approved to operate in single, double, and triple configurations with total capacities up to 55 m³ (72 cu. yd.)
 - Two-position router bits and several edge patterns for different soil conditions
 - Super overflow spill guard available
 - Zinc-coated hydraulic lines and ORFS fittings
 - GPS/laser racks and precision land-leveling kits
 - Rear bumpers and scraper-to-scraper quick-attach hitches available
 - 12-month warranty
 - 24–28-percent scraper tongue weight distribution
 - Exclusive AutoLoad system available
 - Push-loading approved
 - Brakes available on 13.8-m³ (18.0 cu. yd.) model

Get more done, more efficiently, with our smart technology solutions.

You told us you want more from machine monitoring than just data — you want answers. John Deere Precision Construction combines intelligent equipment with smart technology solutions to provide insights on your fleet's productivity, utilization, and job performance. Machine monitoring, maintenance, and diagnostics information is also available for you and your dealer to produce the highest uptime possible from your fleet. We've got you covered with real-time, robust data and insights to help you be profitable and agile.

Machine connectivity*

The key component of John Deere Precision Construction, machine connectivity gives you remote access to data detailing the location and utilization of your entire fleet as well as individual machine usage, fuel level, upcoming maintenance, diagnostics, and alerts from wherever and whenever your work takes you. This service is available with purchases of most new John Deere construction equipment at no additional cost.

John Deere digital solutions powered by connected machines are accessible from any device and from wherever you need to work.

Grade management

John Deere grade-management options enable you to do the same work you've been doing for years at greater speed, in fewer passes, with more accuracy. You'll virtually eliminate the risk of overrunning estimated time and budgeted costs. Choose SmartGrade™ fully integrated grade control (available on 700L–950K Dozers, select excavators, all motor graders, and the 333G Compact Track Loader [CTL]), grade-control ready (all dozers and motor graders), grade guidance (available on select excavators), grade-reference mounts (on select excavators), and grade indicate (for large-frame G-Series Skid Steers and CTLs).

*John Deere continues to expand factory-connectivity options across our product lines. While compact excavators and compact wheel loaders generally do not currently include factory-connectivity options, field-installed kits from John Deere or affiliated solution providers are available to connect any machine or asset to the John Deere Operations Center™. See your dealer for details.



Payload weighing for ADTs and wheel loaders

Onboard payload weighing for Deere articulated dump trucks (ADTs) provides overload protection, with mirror-mounted load indicators informing the operator when truck capacity is pending. Connected payload data also helps managers and jobsite supervisors monitor ADT productivity, making it easy to analyze machine utilization and quickly identify trends that can affect productivity. This data can also be a valuable reference when bidding future projects. The SmartWeigh™ payload-weighing system for mid-size and large John Deere wheel loaders allows operators to load accurately and without rework. Deere-designed and -supported SmartWeigh is fully integrated with connected machine monitoring, so payload data is available in the cab, at the office, or from almost anywhere on mobile devices.

Dealer support

John Deere Precision Construction technologies help optimize customer machines, uptime, and jobsites, ultimately leading to improved profits. But don't let "technology" scare you. Your Deere dealer employs a technology specialist who can help you enjoy the benefits of John Deere Precision Construction with as much or as little involvement as you desire.

Connect to enhanced profitability with John Deere Connected Support™.

Enabled through machine connectivity, John Deere Connected Support leverages a suite of dealer and factory tools designed to deliver increased productivity and uptime, and lower daily operating costs. Dealers proactively elevate the customer experience by remotely monitoring equipment, leveraging machine connectivity, Expert Alerts, and remote diagnostics and programming to keep machines in peak operating condition. John Deere Connected Support creates a partnership between the dealer and factory teams to improve machine uptime and profitability.

Machine health monitoring and Expert Alerts

To maximize the uptime of your equipment, we monitor machine health through an advanced dual approach:

- Specialists at your dealer's Machine Monitoring Center (MMC) use the latest machine-connectivity and alert-management tools to filter and analyze the data generated by your machines. They can also incorporate more traditional inputs, such as fluid-analysis results. This enables them to quickly identify critical issues and react — sometimes before you even know there is a problem.
- Our central Machine Health Monitoring Center located inside John Deere Dubuque Works analyzes data from thousands of connected machines. Analysts identify trends within the data, determine causes, and develop new and improved preventative-maintenance and repair protocols called Expert Alerts. These alerts are deployed to dealer MMCs to continuously improve the speed and accuracy of machine-health solutions.



Remote diagnostics and programming

Your Deere dealer can initiate repair solutions without visiting the jobsite and charging you for a technician's travel time with John Deere Precision Construction remote diagnostics and programming. By accessing and resetting diagnostic trouble codes and recording performance readings remotely, your dealer can help you reduce downtime.

Remote performance recordings

If your machine malfunctions at 1,000 rpm, for example, your Deere dealer can use remote diagnostics to record particular machine parameters at that rpm. And readings can be taken at full machine functionality, eliminating downtime. If parts are needed to fix the problem via remote diagnostics, the technician can arrive onsite with the right parts.

Remote software updates

Using remote programming, your machine can also receive wireless software updates, avoiding a technician trip to the jobsite. Your fleet-management and -maintenance team is twice as strong when the dealer and your machines are connected through remote diagnostics and programming.

Additional dealer-delivered uptime solutions:

Extended warranties

We offer engine-only, powertrain, combined powertrain and hydraulics, and full-machine extended coverage plans. Extended warranties are a great way to protect your cash flow while minimizing risk.

Customer-support agreements

Your dealer can perform scheduled service for your machines using genuine John Deere parts, keeping track of maintenance intervals and performing the work so you don't have to. Add a total repair agreement, and dealer technicians can also provide all required repairs, eliminating the need for in-house service staff and training.

John Deere Protect™

John Deere Protect is a suite of service offerings designed to help keep machine-ownership costs down by reducing the risk of unexpected downtime and high repair costs. The program enables annual maintenance costs to be locked in, eliminating unplanned price increases and further simplifying owning and operating expenses.

Comprehensive fluid analysis

Your dealer can also perform fluid analysis for engine, hydraulic, powertrain, cooling, and fuel systems. These readings provide data that's imperative to understanding machine health and preventing unscheduled downtime.

Maintenance cost planning

John Deere Ultimate Uptime solutions can be financed with your machine or through revolving credit options. John Deere Financial has a full menu of customized business solutions to meet all your cash-flow needs.

Custom uptime solutions

Response-time guarantees, operator training, and on-site parts inventory — your dealer will help deliver what you need.

Undercarriage solutions

Choose from Standard Life, Extended Life, or Maximum Life undercarriage systems to match your working conditions. Your dealer can help you choose the one that's right for your operation.

Fast parts availability

Your John Deere dealer can fulfill your parts needs whether it's over the counter, delivered to the jobsite, or ordered online. If your dealer does not have a part in stock, Deere Regional Parts Distribution Centers can provide same-day shipping* direct to the dealer or to you.

*Same-day shipping is contingent on carrier availability and time of order.

Construction wear parts

John Deere offers the most innovative line of wear parts in the industry — including TK-Series bucket teeth, Stinger™ scarifier blades, and JAGZ™ cutting edges. Along with our complete line of bucket-protection items such as chocky bars and wear buttons, bucket liners, and side panels, these wear parts help you work smarter while increasing profits.

Genuine John Deere maintenance parts and fluids

Oils, coolant, filters, batteries, hydraulic hoses, and grease available from your Deere dealer are specially formulated to maximize machine uptime and performance.

John Deere Reman parts and components

Get like-new performance for a fraction of the cost of new components. John Deere Reman transmissions, axles, engines, hydraulic pumps, fuel-injector nozzles, and other parts are remanufactured to OEM specifications with certified parts, performance tested, and backed by a Deere parts-and-labor warranty when dealer installed.

John Deere ReLife

With John Deere Powertrain ReLife Plus, you can prolong the life of your loader, articulated dump truck (ADT), dozer, excavator, motor grader, skid steer, or Scraper Special tractor for a fraction of the cost of buying new. Powertrain ReLife Plus starts with the replacement of major powertrain components and your choice of extended warranty.[†] Then, review the findings of a thorough machine inspection with your dealer and choose the additional improvements you want to make based on your specific needs and applications.

Certified Rebuild Centers

These dealer facilities are recognized by John Deere for meeting specific standards of quality and execution of machine rebuilds, including working with you to determine the overall objectives of your future fleet needs in the most cost-effective way.

Operator and technician training

The John Deere Training Center boosts John Deere Ultimate Uptime through a curriculum with three avenues of learning: 1) electronic media via the internet, 2) state-of-the-art operator-training simulators, and 3) expert instructors in a classroom setting. Through the Training Center you can educate your employees, boost productivity, and promote safety while reducing your operating expenses.

Technical support website and call center

You'll find John Deere Construction & Forestry technical information — available in print, CD/DVD, or PDF — at JohnDeeretechno.com. You can also contact our technical support call center at 866-213-3373 for product guidance and order assistance.

[†]John Deere Powertrain ReLife Plus warranty covers replaced major powertrain components.



The most important thing we build is your business.

Here to help with the heavy lifting.

Running and growing your business is a challenge. That's why John Deere Financial is here to lighten your load — with solutions you can count on, backed by solid values you can build with.

– Committed to you in all seasons.

We're here through all the seasons of your business to provide you with the financing you need as you work toward your goals. Knowing you and your business means we can help you acquire the equipment, parts, and service you need.

– A long-term relationship you can trust.

At John Deere, integrity is one of our core values. It guides how we do business, with simple applications, straightforward contracts, and prompt follow-through.



– **Easy access. Flexible financing.**

Our flexible financing options work as hard as your equipment. Payments can be tailored to match your cash flow, with various term lengths and structures, so you can acquire the machines, technology, attachments, and parts your operation needs. We offer options that let you transact business like you want to, with digital solutions such as eSignature, electronic statements and payments, and online account access at MyFinancialAccounts.deere.com.

Grow with us.

Find out all the ways we can build together. Contact your dealer for more information.



JOHN DEERE
FINANCIAL

JohnDeereFinancial.com

